



Courtfield Gardens, W13

£375,000

Offers in excess of A large, beautifully presented, top floor one bedroom flat, in a popular residential location in West Ealing. The property has a large, open plan reception room/kitchen, large double bedroom, modern bathroom and allocated off street parking.

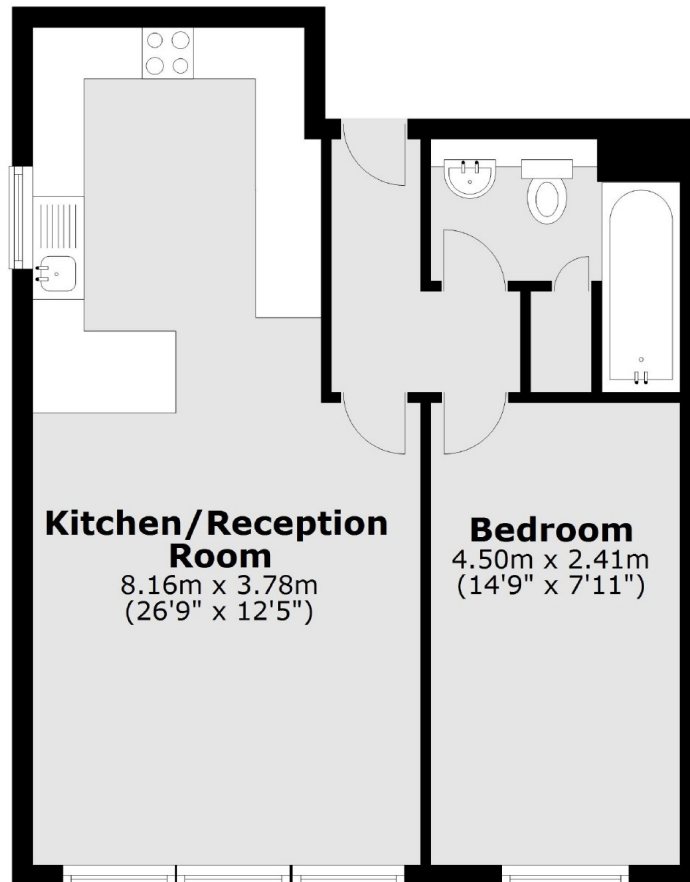


The property is located on Courtfield Gardens in West Ealing, close to various transport links and amenities.

- One Bedroom • Top Floor • Open Plan •
 - Modern Bathroom • Off Street Parking • Close To Station •
-



Second Floor



Total area: approx. 47.5 sq. metres (511.1 sq. feet)

Robertson Smith & Kempson Ealing Sales
1 The Broadway, London, W5
2NT
020 8840 7677
ealingsales@robertsonsmithandkempson.co.uk

Energy Rating: C. We aim to make our particulars both accurate and reliable. However they are not guaranteed; nor do they form part of an offer or contract. If you require clarification on any points then please contact us, especially if you're traveling some distance to view. Please note that appliances and heating systems have not been tested and therefore no warranties can be given as to their good working order.