



NATAL ROAD, SW16

£950,000

- Five double bedrooms
- Great specification
- In excess of 1900 sq ft
- Chain free
- Ferrers Triangle
- Energy rating: C





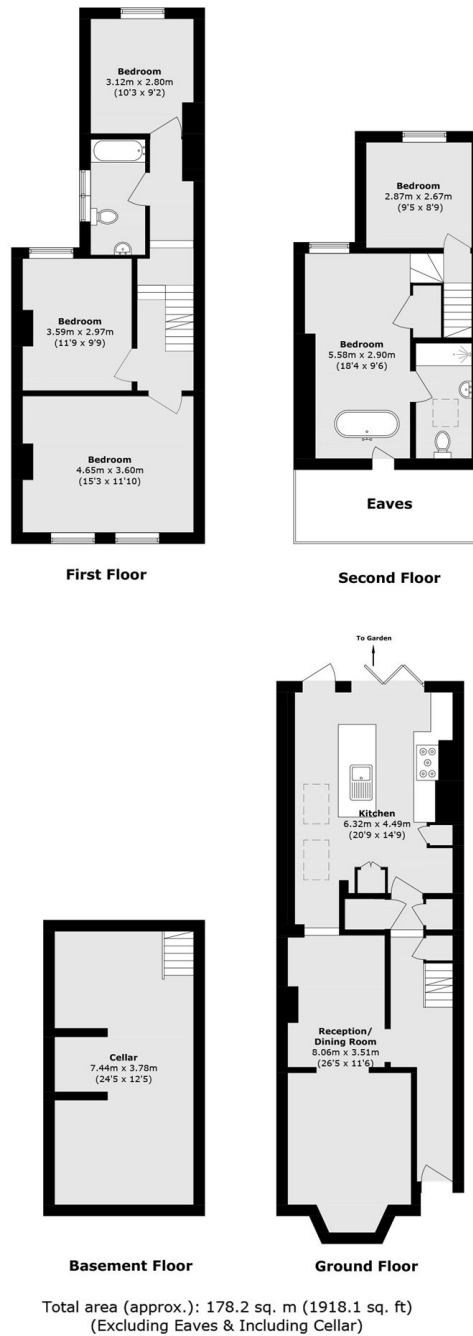
ABOUT THE HOME

A fully extended five double bedroom Victorian terraced house presented in terrific condition. This charming house benefits from being extended into the side return to create a spacious kitchen/diner, as well as in to the loft to add two additional double bedrooms and a second bathroom. In addition to the living space, which measures in excess of 1900 square feet, there is also a good sized cellar.

Natal Road is well located for all the amenities of the area including many pubs, independent coffee shops, restaurants, several large supermarkets, leisure centre and the Common. Transport links are also excellent, with Streatham and Streatham Common offering quick links in to Victoria, London Bridge and the Thameslink service.







JACKSONS STREATHAM

1-3 De Montfort Parade,
Streatham High Road,
Sales: 020 8487 3179
Lettings: 020 8487 3180

Energy Rating: C We aim to make our particulars both accurate and reliable. However they are not guaranteed; nor do they form part of an offer or contract. If you require clarification on any points then please contact us, especially if you're traveling some distance to view. Please note that appliances and heating systems have not been tested and therefore no warranties can be given as to their good working order.