



JON WILKINS

exp® UK

@ jon.wilkins@exp.uk.com

🌐 jonwilkins.exp.uk.com

☎ 07894 759 843

Flat 16, Carisbrooke Court, Station Approach, Cheam
£1,600PCM (Deposit: £1,846)

🛏 1 🚿 1 🛋 1

- Ref: JW1252
- Available 2nd March 2026
- Well presented & Spacious 1 Bed Flat
- Fitted Kitchen & Separate Lounge
- Convenient For Train Station
- Large Storage Cupboard
- Allocated Parking Space
- EPC Rating C
- Council Tax Band C
- Dilapidation Deposit £1846

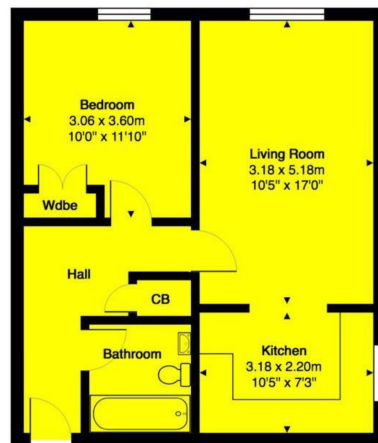


Tax Band: C Furnished: Unfurnished

JW1252

We are delighted to offer this spacious one bedroom apartment in Cheam Village, located conveniently for the station and shops. The property is in good condition, having recently been redecorated and has a large lounge, fitted kitchen, bathroom, double bedroom, large storage cupboard and a designated parking space!

Available 2nd March 2026
EPC Rating C
Council Tax Band C
Dilapidation Deposit £1846



Total Area 48.3 m² ... 51 — ft²

Disclaimer This plan is for layout guidance only and NOT TO SCALE
Windows and door openings are approximate
Whilst care is taken in the preparation of this plan,
please check all dimensions and shapes before making any decisions reliant on them.



eXp World UK Ltd is a registered company at Corporation Service Company (UK) Limited, 5 Churchill Place, 10th Floor, London,
United Kingdom, E14 5HU. Registered company number is 12016573. VAT Registration Number is 327 4120 29