



Uplands House

Le Mont





Uplands House, Le Mont, St Ouen, JE3 2EE

Stunning Period Home with Equestrian Facilities -

Located in a prime rural position in St. Ouen, this beautifully presented period property offers spacious living, characterful interiors, and excellent equestrian facilities, with glimpses of the bay visible from the top floor and surrounding fields.

Immaculately maintained and tastefully furnished, the home features a vaulted ceiling family kitchen that opens into a bright orangery, a formal dining room, and two additional reception rooms currently utilised as `his and hers` home offices or accessible ground floor bedrooms highlighting the homes flexibility.

With five generously sized bedrooms, three bathrooms, and a second independent staircase accessed via the rear porch ideal for guests, teenagers, or creating a self-contained wing—the layout is highly versatile. It lends itself well to multi-generational living, guest accommodation, home working, rental or even AirBnB potential.

The games room above the garage could also serve as a separate home office, studio, or gym.

Set on approximately 12 verges of fully fenced land, the property includes a well-maintained stable block with five boxes, storage areas, and direct access to scenic hacking routes through quiet parish lanes. The beach is just a 10 minute walk away, offering a rare combination of country and coastal lifestyle.

To the front, a lawned garden creates an impressive approach. Ample gravel parking and a large garage offer space for ample vehicles, horse boxes, or trailers.

This iconic home seamlessly blends elegant country living with the practical flexibility required by modern families and equestrian enthusiasts.

Viewing highly recommended.



5



3



5

Parish: St Ouen

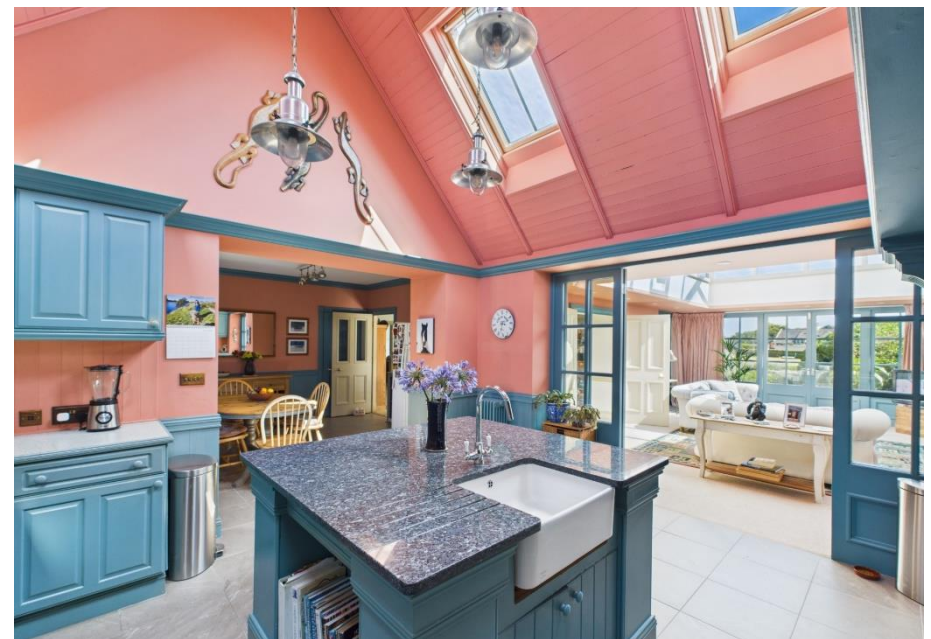
Qualification: Qualified

Tenure: Freehold

Price £2,975,000



- Stunning period home with rural and sea views
- Spacious accommodation with 5 bedrooms & 3 bathrooms
- Vaulted family kitchen opening to a bright orangery
- Versatile layout with secondary staircase for guests/teens
- Equestrian facilities including 5 stables & 12 verges of land
- Garage with games room, ample parking & lawned garden



















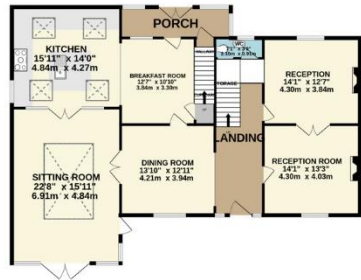




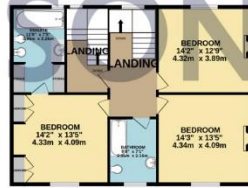
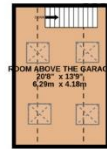




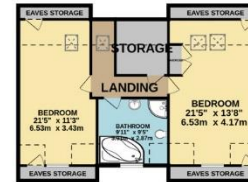
GROUND FLOOR
1943 sq.ft. (180.5 sq.m.) approx.



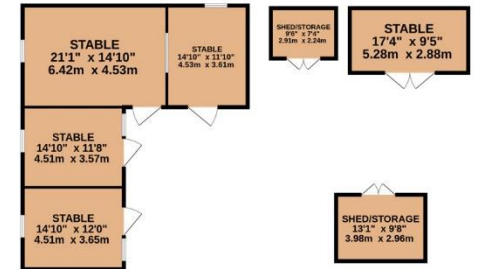
1ST FLOOR
1192 sq.ft. (110.8 sq.m.) approx.



2ND FLOOR
870 sq.ft. (80.8 sq.m.) approx.



STABLES
1200 sq.ft. (111.5 sq.m.) approx.



TOTAL FLOOR AREA : 5204 sq.ft. (483.5 sq.m.) approx.

Whilst every attempt has been made to ensure the accuracy of the floorplan contained here, measurements of doors, windows, rooms and any other items are approximate and no responsibility is taken for any error, omission or mis-statement. This plan is for illustrative purposes only and should be used as such by any prospective purchaser. The services, systems and appliances shown have not been tested and no guarantee as to their operability or efficiency can be given.

Made with Metropix ©2025

This plan is for layout guidance only. Not drawn to scale unless stated. Windows and door openings are approximate. Whilst every care is taken in the preparation of this plan, please check all dimensions, shapes and compass bearings before making any decisions reliant upon them.

+441534 877977

Knight Frank Jersey

37-39 Halkett Place, St. Helier, Jersey JE2 4WG

knightfrank.je

Your partners in property

1. Particulars: These particulars are not an offer or contract, nor part of one. You should not rely on statements given by Knight Frank Jersey in the particulars, by word of mouth or in writing (“information”) as being factually accurate about the property, its condition or its value. Neither Knight Frank Jersey nor any joint agent has any authority to make any representations about the property, and accordingly any information given is entirely without responsibility on the part of Knight Frank Jersey. 2. Material Information: Please note that the material information is provided to Knight Frank Jersey by third parties and is provided here as a guide only. While Knight Frank Jersey has taken steps to verify this information, we advise you to confirm the details of any such material information prior to any offer being submitted. If we are informed of changes to this information by the seller or another third party, we will use reasonable endeavours to update this as soon as practical. 3. Photos, Videos etc: The photographs, property videos and virtual viewings etc. show only certain parts of the property as they appeared at the time they were taken. Areas, measurements and distances given are approximate only. 4. Regulations etc: Any reference to alterations to, or use of, any part of the property does not mean that any necessary planning, building regulations or other consent has been obtained. A buyer must find out by inspection or in other ways that these matters have been properly dealt with and that all information is correct. 5. Fixtures and fittings: A list of the fitted carpets, curtains, light fittings and other items fixed to the property which are included in the sale (or may be available by separate negotiation) will be provided by the Seller’s Lawyer. Particulars dated 03/09/2025. All information is correct at the time of going to print.

