



4 Elgin Close, Hythe, SO45 6JG
£400,000



ANTHONY JAMES
PROPERTIES



4 Elgin Close

Hythe, Southampton

This well-presented three bedroom detached bungalow is offered to the market with no onward chain and provides spacious, flexible accommodation throughout. The property features a bright and airy lounge, ideal for both relaxing and entertaining. A generous conservatory to the rear offers an additional living space that overlooks the garden, creating a seamless connection between indoors and outdoors. The shower room is well-appointed, and all three bedrooms are well-proportioned, making this an ideal home for families or those seeking single-level living. Additional benefits include a garage and driveway parking.

The outside space is equally impressive. To the front, a driveway provides off road parking for numerous vehicles, while the remaining area is laid to lawn, creating a welcoming approach to the property. The sunny and enclosed rear garden is mainly laid to lawn and offers a perfect space for family's and keen gardeners to enjoy. Features include a storage shed to the side, a greenhouse, and mature shrubs and hedges to the borders, providing both privacy and a pleasant outlook.

Council Tax band: D

Tenure: Freehold



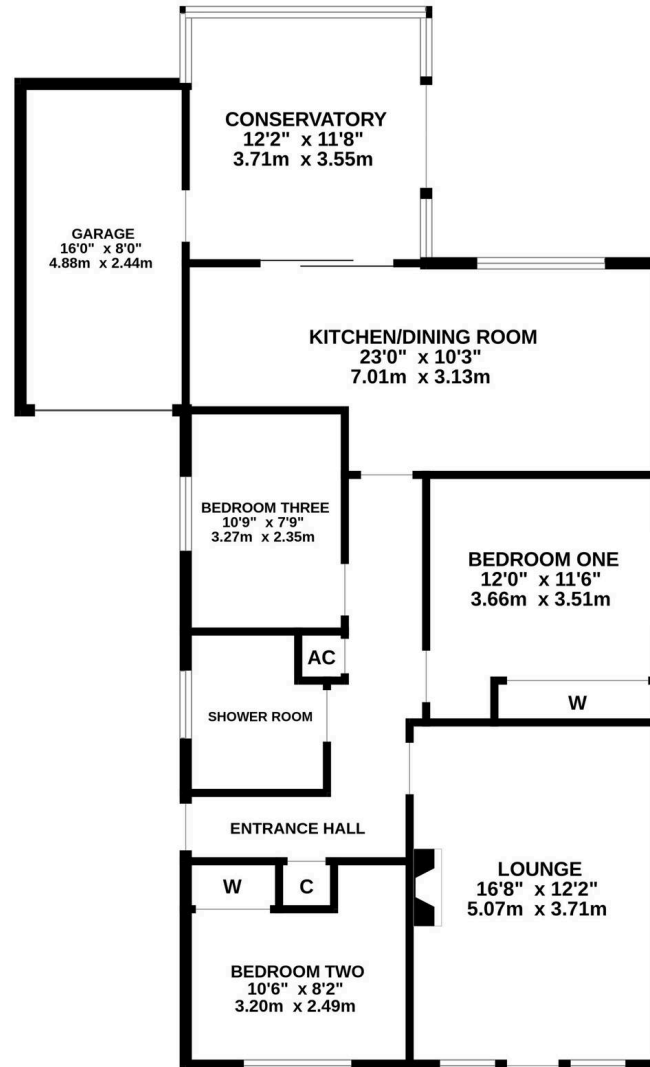
1 Southward House
Dibden Purlieu SO45 4PT



T: 02380 844405
info@anthonyjamesproperties.co.uk



GROUND FLOOR



Whilst every attempt has been made to ensure the accuracy of the floorplan contained here, measurements of doors, windows, rooms and any other items are approximate and no responsibility is taken for any error, omission or mis-statement. This plan is for illustrative purposes only and should be used as such by any prospective purchaser. The services, systems and appliances shown have not been tested and no guarantee as to their operability or efficiency can be given.
Made with Metropix ©2026