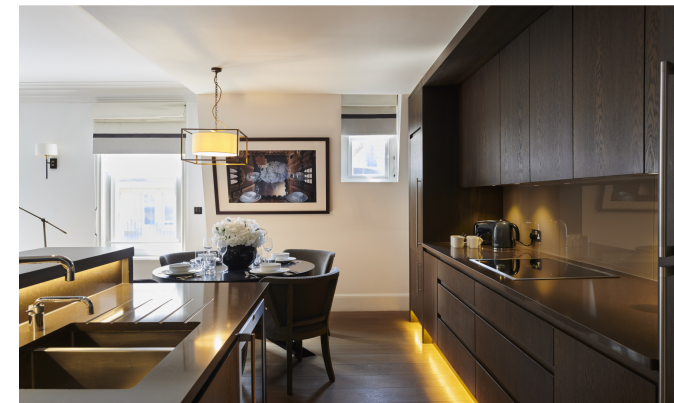




INTERLET

DUKE STREET, MAYFAIR, LONDON, W1K
£2,500 PW



A spectacular, refurbished one-bedroom, northwest-facing apartment situated on the third floor within this beautiful Victorian red brick building. This luxury apartment has been finished to the highest of specifications using modern finishes and the latest "smart home" technology. The apartment benefits from double doors from the hallway leading onto an open-plan reception room and kitchen, offering elegant living and entertaining space, a guest cloakroom, and a utility room with Miele appliances. The flat is available furnished or unfurnished and benefits from a dedicated building manager, a team of maintenance experts, a 24-hour emergency helpline, a porter, and CCTV. This Grade II listed building holds its classic original features and consists of a lift, a dedicated on-site concierge, and storage lockers for all apartments. With its central location and excellent public transport facilities, Mayfair allows easy access to the rest of London. Nearby underground stations include Bond Street (Central and Jubilee Lines), Marble Arch (Central Line), Green Park (Jubilee, Piccadilly, and Victoria Lines), and several regular and varied bus services further improve accessibility. EPC Rating: G Council Tax Band: C[...]

lettings@interlet.com
+44(0)20 7795 6525
www.interlet.com

Important Notice

Interlet and their clients give notice that: 1) They are not authorised to make or give any representations or warranties in relation to the property, either here or elsewhere. The particulars do not form part of any offer or contract and must not be relied upon as statements or representations of fact. 2) Any areas, measurements, and distances are approximate. The text, images, and plans are for guidance only and are not necessarily comprehensive. It should not be assumed that the property has all necessary planning, building regulation, or other contents. Interlet has not tested any services, equipment, or facilities. Prospective tenants must satisfy themselves by inspection or otherwise. Please note that the local area may be affected by aircraft noise, you should make your own inquiries regarding any noise in the area before you make an offer.



THIRD FLOOR

APPROX. GROSS INTERNAL AREA*
1097 Ft² - 101.91 M²

Property Details:

FLAT 3.02
65 DUKE STREET
W1

Plans Drawn: 13.05.2016

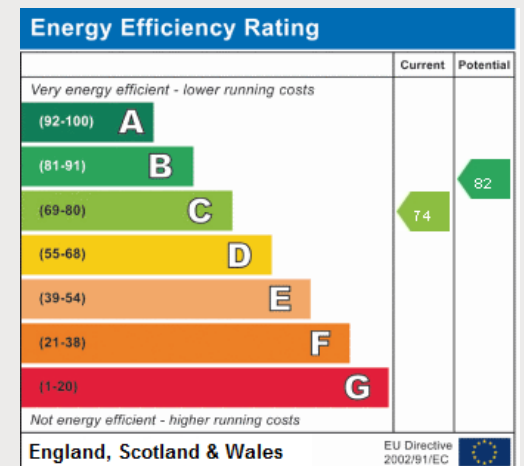
Surveyed and Drawn By:

BKR

Sunnyhill House
3-7 Sunnyhill Road
London, SW16 2UG

Tel: 0845 257 2623
Fax: 0845 257 2634
info@bkrfloorplans.co.uk
www.bkrfloorplans.co.uk

© BKR 2016



1
 1
 1

 1106 SQFT

iNTERLET
SALES & LETTINGS

Welcome home.