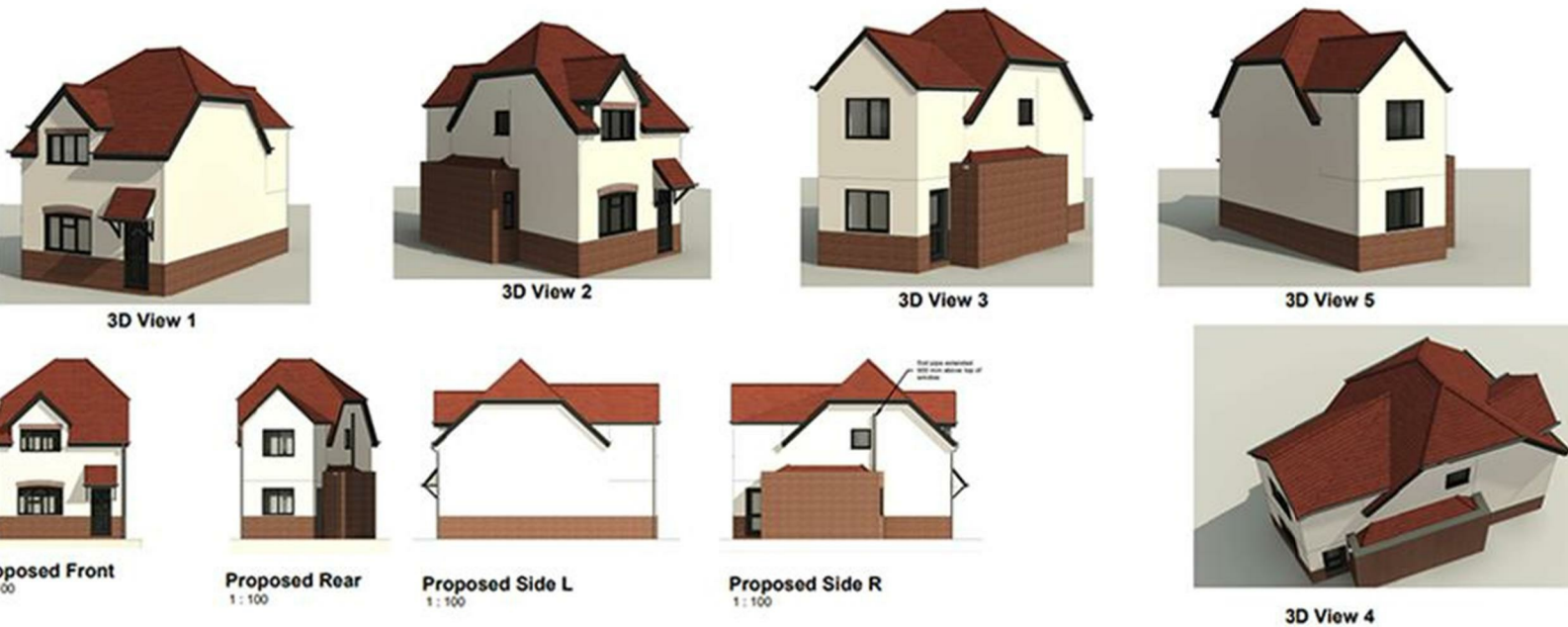


bear

Estate Agents



Bear Estate Agents are delighted to offer for sale this stunning two bedroom detached new build home, available off plan and ideally located in the ever-popular East Street area of Southend-on-Sea. Completion is expected by December 2025 – an excellent opportunity to secure a high-quality home in a prime location before it's finished.

This thoughtfully designed property combines modern open-plan living with excellent functionality. The accommodation comprises two generous double bedrooms, main bathroom, a spacious lounge, and a contemporary kitchen/diner complete with bi-folding doors that open directly onto a private rear garden – ideal for entertaining or relaxing in the summer months.

Further features include:

Two off-street parking spaces

Large utility room

Guest cloakroom/WC

- No Onward Chain
- Two Double Bedroom Detached Home
- Good Size Private Rear Garden
- Parking To The Front
- Side Access
- Guest WC & Utility Room
- Large Open Plan Kitchen/Diner
- Completion Due In August
- New Build
- Guarantee's On All Appliances

East Street

Southend-on-Sea

£395,000

Offers In The Region Of



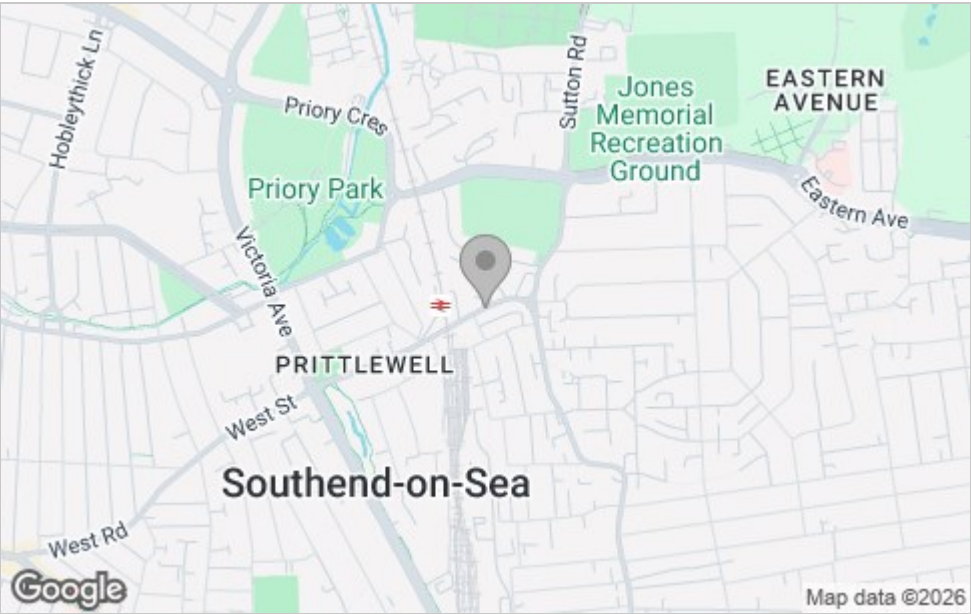
East Street



Floor Plan



Area Map



Viewing

Please contact our Hockley Office on 01702 416476 if you wish to arrange a viewing appointment for this property or require further information.

These particulars, whilst believed to be accurate are set out as a general outline only for guidance and do not constitute any part of an offer or contract. Intending purchasers should not rely on them as statements of representation of fact, but must satisfy themselves by inspection or otherwise as to their accuracy. No person in this firms employment has the authority to make or give any representation or warranty in respect of the property.

11 Main Road, Hockley, Essex, SS5 4QY

Office: 01702 416476 hockley@bearestateagents.co.uk <https://www.bearestateagents.co.uk>

Energy Efficiency Graph

