

CRUIVE
Estate Agents

OFFERS OVER

£295,000

Coronation Street
Wishaw, ML2 8LF

PROPERTY SUMMARY

*****CLOSING DATE TUESDAY 10TH MARCH AT 12PM***** Positioned upon a much coveted South facing plot within a pretty, sought-after pocket of Wishaw, is this handsome and imposing red sandstone, semi-detached villa. Constructed circa 1900 this stunning family home exudes period charm whilst offering bright and spacious accommodation conducive with modern family living.

This well-appointed layout of apartments comprises; entrance vestibule with external storm door, original tiled floor, & internal glazed door, broad and welcoming reception hallway with under-stairs storage, grand, front facing formal lounge with original parquet flooring, feature bay window, and fireplace, family room with attractive dual aspect windows and decorative alcove; this generous room could easily lend itself to being a fourth ground floor bedroom.

Located to the rear of the property is a dining size, fitted kitchen with integrated appliances, wrap round breakfast bar, seating booth, and pantry cupboard, laundry/boot room, sunroom overlooking garden, and modern two-piece cloaks/wc with storage.

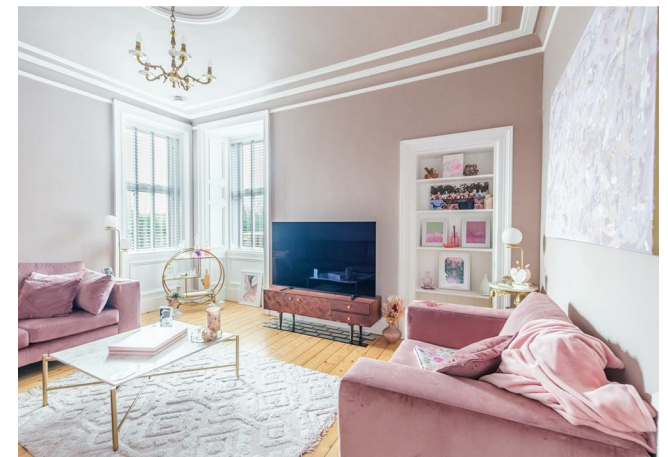
3



1



2











This Floorplan Is Intended To Give An Indication Of The Layout Only.



LOCAL AUTHORITY

North Lanarkshire

TENURE

Freehold

COUNCIL TAX BAND

E

VIEWINGS

By prior appointment only

Energy Efficiency Rating		
	Current	Potential
<i>Very energy efficient - lower running costs</i>		
(92 plus) A		
(81-91) B		
(69-80) C		
(55-68) D	63	76
(39-54) E		
(21-38) F		
(1-20) G		
<i>Not energy efficient - higher running costs</i>		
Scotland	EU Directive 2002/91/EC	

Agents Note: Whilst every care has been taken to prepare these particulars, they are for guidance purposes only. All measurements are approximate and are for general guidance purposes only and whilst every care has been taken to ensure their accuracy, they should not be relied upon and potential buyers/tenants are advised to recheck the measurements



OFFICE ADDRESS

9 Townhead Street
Strathaven
ML10 6AB

OFFICE DETAILS

01357 510088
judithmcgill@cruive-
estateagents.co.uk