



Price

£2,100 PCM

Fees Apply

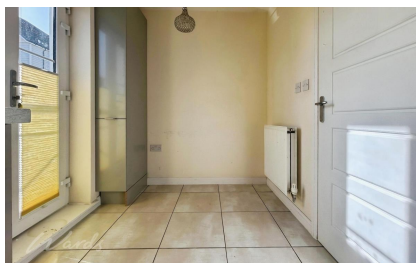
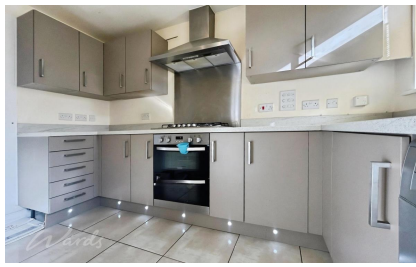


Available 29/04/26

Crabapple Road
Tonbridge TN9

Wards

Helping you move forwards



Main Features

- Popular location
- Garden
- WC, Bathroom & En-suite
- Spacious throughout
- Walking distance to town centre
- Pets considered



Deposit required is £2,423.08
Tonbridge and Malling District - Council Tax Band Tax Band E

Renting a property is a big commitment and we recommend that you visit the local authority website and these websites which offer helpful information and advice about letting

- www.gov.uk/government/publications/how-to-rent
- www.gov.uk/private-renting
- www.wardsofkent.co.uk/renting/tenancy-fees-individuals/
- www.gov.uk/green-deal-energy-saving-measures

Call Tonbridge 01732 770833 ■ wardsofkent.co.uk

IMPORTANT INFORMATION: Please contact our Lettings Team who will confirm the total costs involved in renting this property. For clarification, we wish to inform the prospective tenant that we have prepared these details as a general guide. The agent has not carried out a detailed survey nor tested the services, appliances, or specific fittings (unless otherwise stated), and no warranty can be given as to their condition. All room measurements are taken at floor level. We strongly recommend that all the information which we provide about the property is verified by yourself and your advisers. The contents of this publication are © Wards, 2015. Wards is a trading name of Arun Estates Limited Registered in England No. 2597969

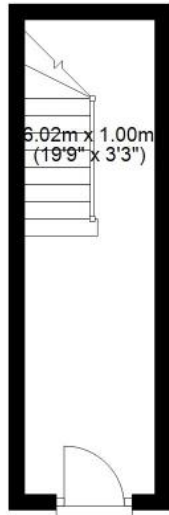
Accommodation

- Entrance hallway
- Lounge 4.55 x 3.92
- WC 1.57 x 1.27
- Kitchen 3.93 x 3.44
- Bedroom 3 3.38 x 3.32
- Bathroom 2.26 x 1.83
- Bedroom 4 3.93 x 2.74
- Bedroom 2 3.93 x 3.37
- Bedroom 1 3.97 x 3.33
- En-suite shower room 1.88 x 1.88

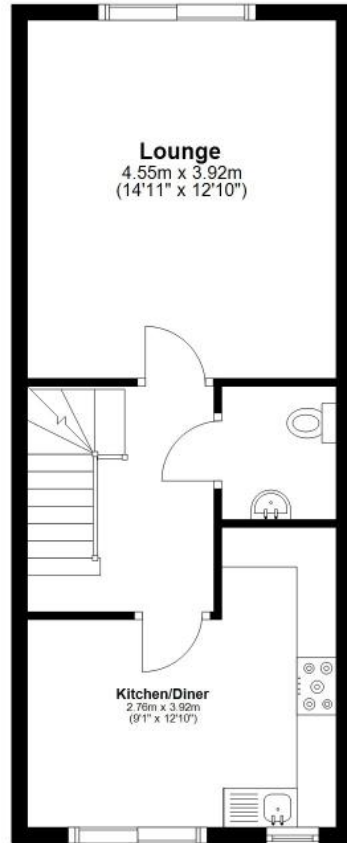
Garden



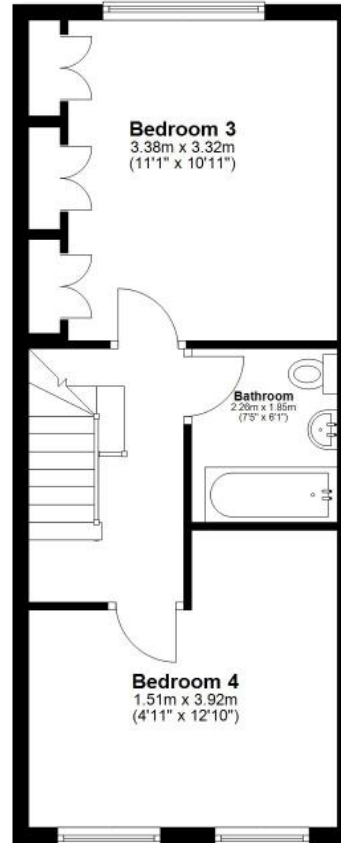
Ground Floor
Approx. 6.0 sq. metres (64.8 sq. feet)



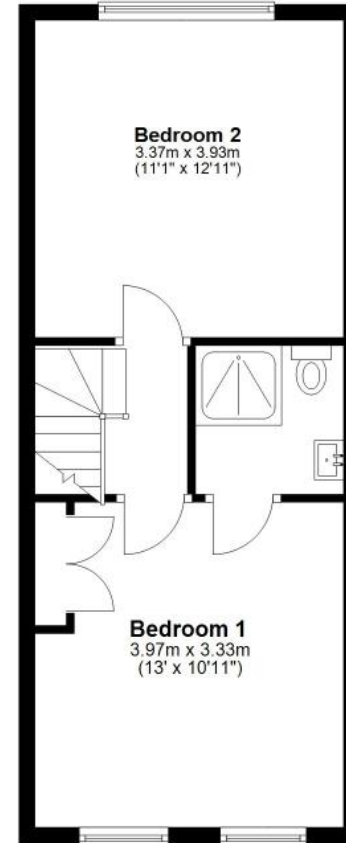
First Floor
Approx. 38.8 sq. metres (417.6 sq. feet)



Second Floor
Approx. 36.0 sq. metres (387.0 sq. feet)



Third Floor
Approx. 34.7 sq. metres (373.0 sq. feet)



Total area: approx. 115.4 sq. metres (1242.5 sq. feet)