



Stoneleigh, 64 Cortworth Road
Ecclesall, Sheffield, S11 9LP



Stoneleigh - 64 Cortworth Road Ecclesall

Situated at the top of this exclusive road on a slightly elevated plot of approximately quarter of an acre, a superb large and substantially extended Freehold five bedroom, four bathroom detached family residence extending to approx 4,000 Sq.ft.

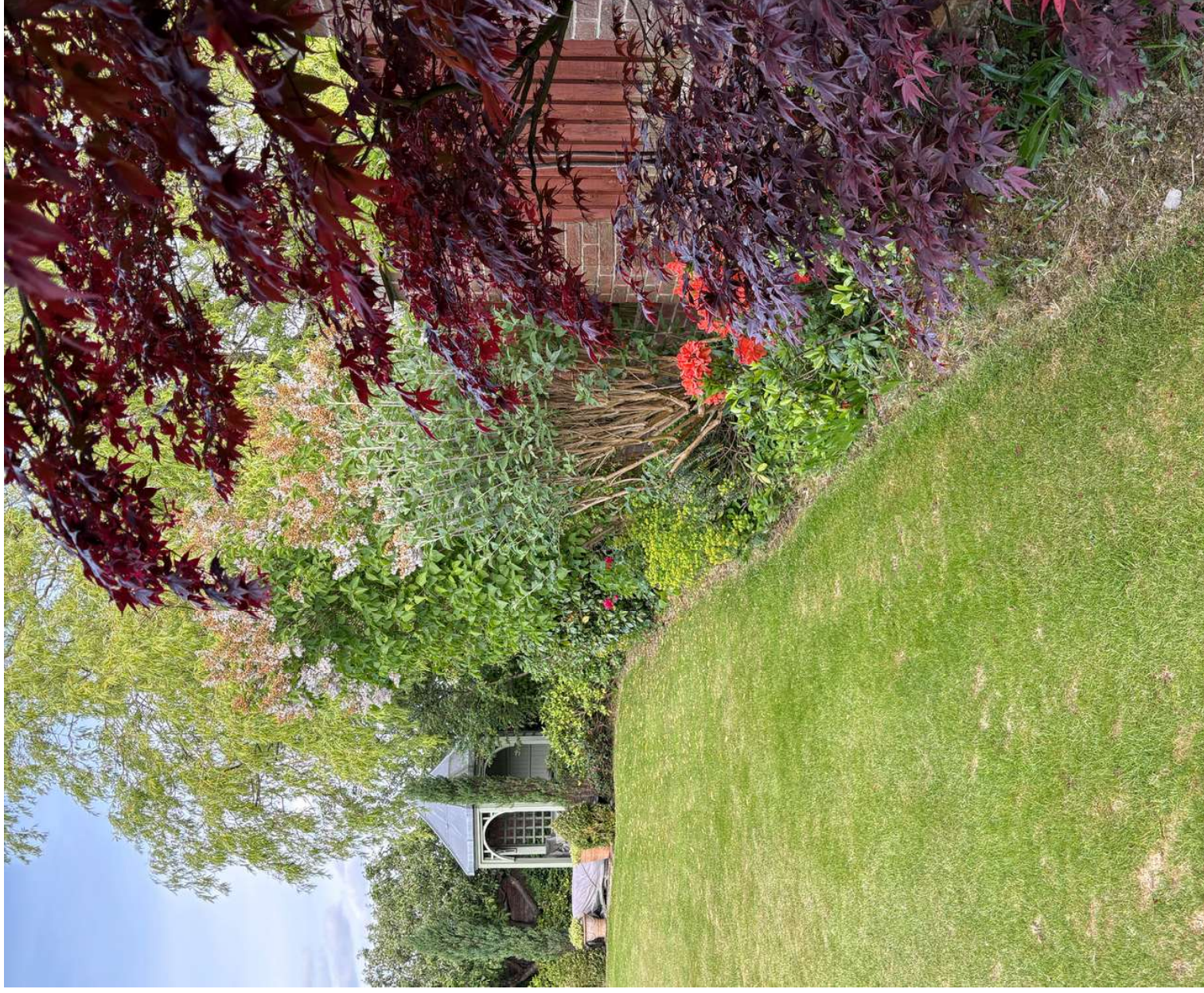
The property has been built to a very high standard and tastefully improved and extended in recent years with no expense spared with stone mullion windows to the front and spectacular Conservatory to the rear.

Ecclesall is one of Sheffield's most exclusive suburbs, it is in an excellent catchment area for schools and nearby private schools including Birkdale and Sheffield Girls High School, close to excellent shops, sports clubs and a short drive or walk to the stunning open countryside of the Peak District.



KEY FEATURES

- Top of the exclusive Cortworth Road
- Five bedrooms and Four Bathrooms
- Approximately 4,000 Sq ft
- Excellent private plot of approximately a Quarter of an Acre
- Very high spec and tastefully extended
- Large entertaining areas including stunning Conservatory
- Large extended bespoke living kitchen
- Excellent catchment area for schools
- Short drive to the open countryside of the Peak District
- Early inspection strongly recommended



GROUND FLOOR

Impressive entrance with panelled porch, broad welcoming reception hall and attractive oak staircase. Very large through sitting room with marble fireplace and open fire. Snug area to the rear with French doors to the rear terrace.

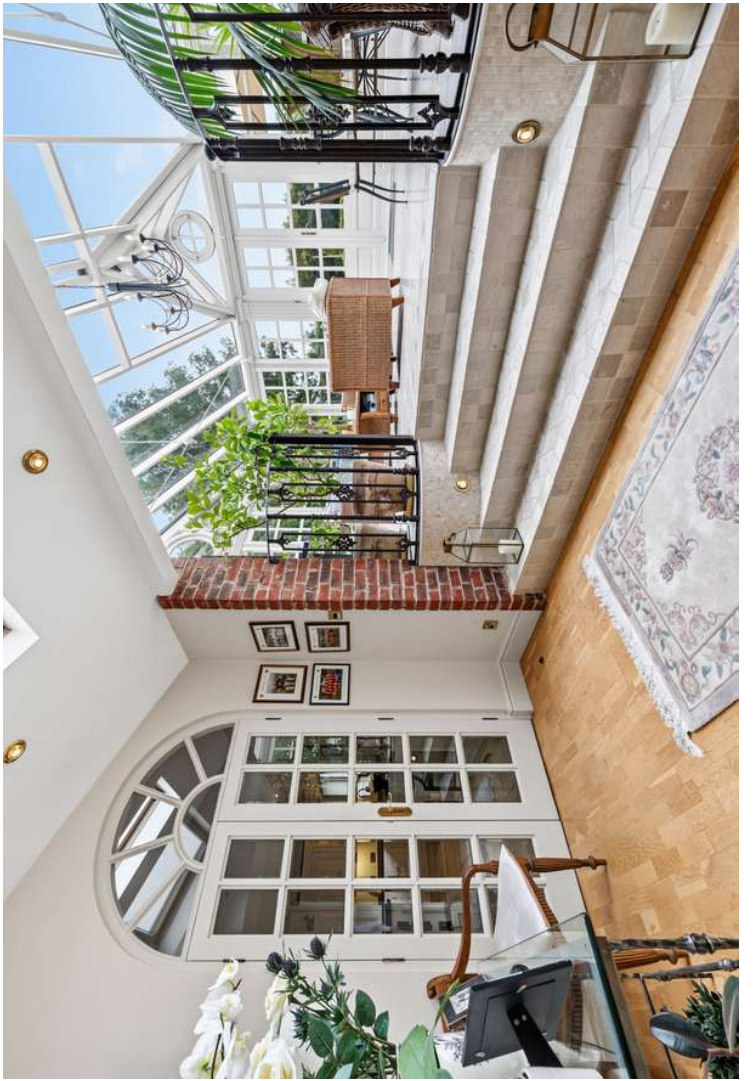
There is a separate formal dining room and study. Large extended living kitchen with high quality bespoke David J Martin kitchen cabinetry, including a Butler's Pantry and Island. There is an extensive range of cupboards and drawers with granite work surfaces and porcelain tiled floor. The kitchen dining area has an elegant, classical designed dresser. The spacious utility room affords access to an integrated double garage.

Leading off the entrance hall is a cloakroom and separate Guest WC. From the sunlit inner lobby there are feature marble steps leading to the spectacular large conservatory creating an all year round entertaining room which is double glazed and includes Travertine marble flooring. There is a fantastic outlook over the private walled garden.











FIRST FLOOR

Oak feature staircase from the reception hall leads up to the half landing and then to a galleried main landing, master bedroom with ensuite bathroom, bedroom two with ensuite bathroom, bedroom three a double bedroom with ensuite shower room, bedroom four a double bedroom with access to main family shower room, bedroom five a double bedroom.







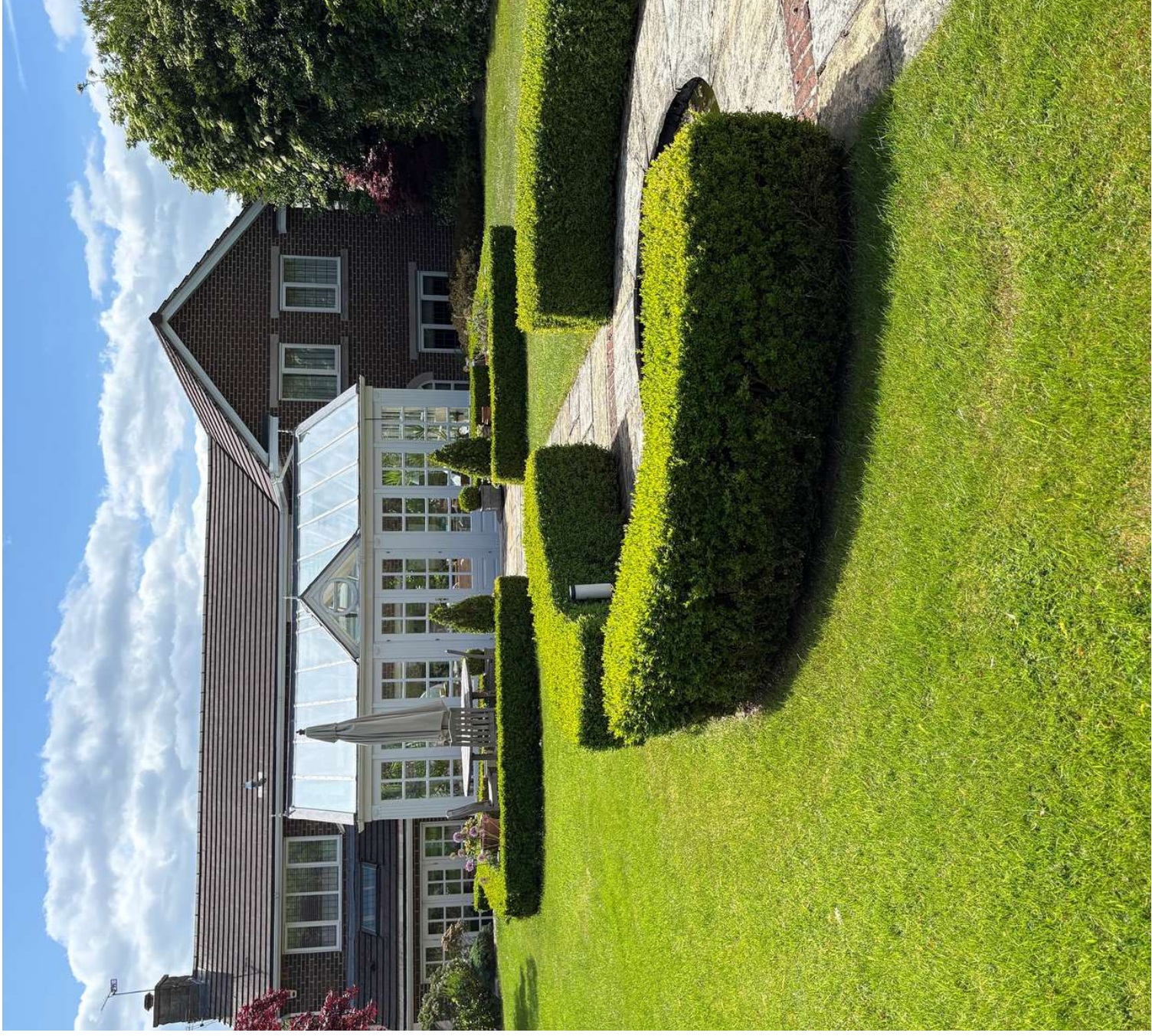




EXTERIOR

Block paved driveway at the front with parking for several cars and giving access to double garage.

At the rear a large private, beautifully landscaped garden

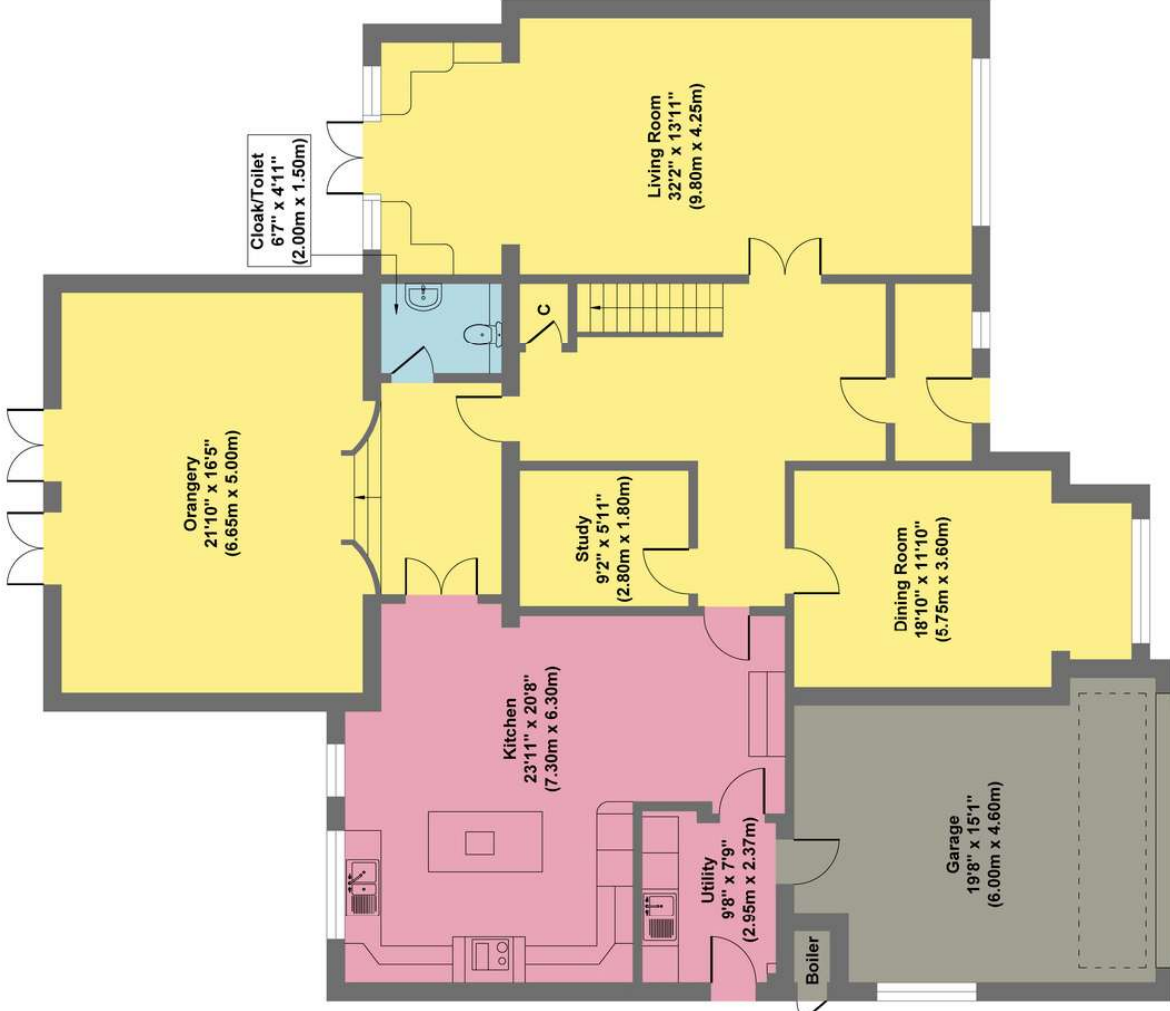




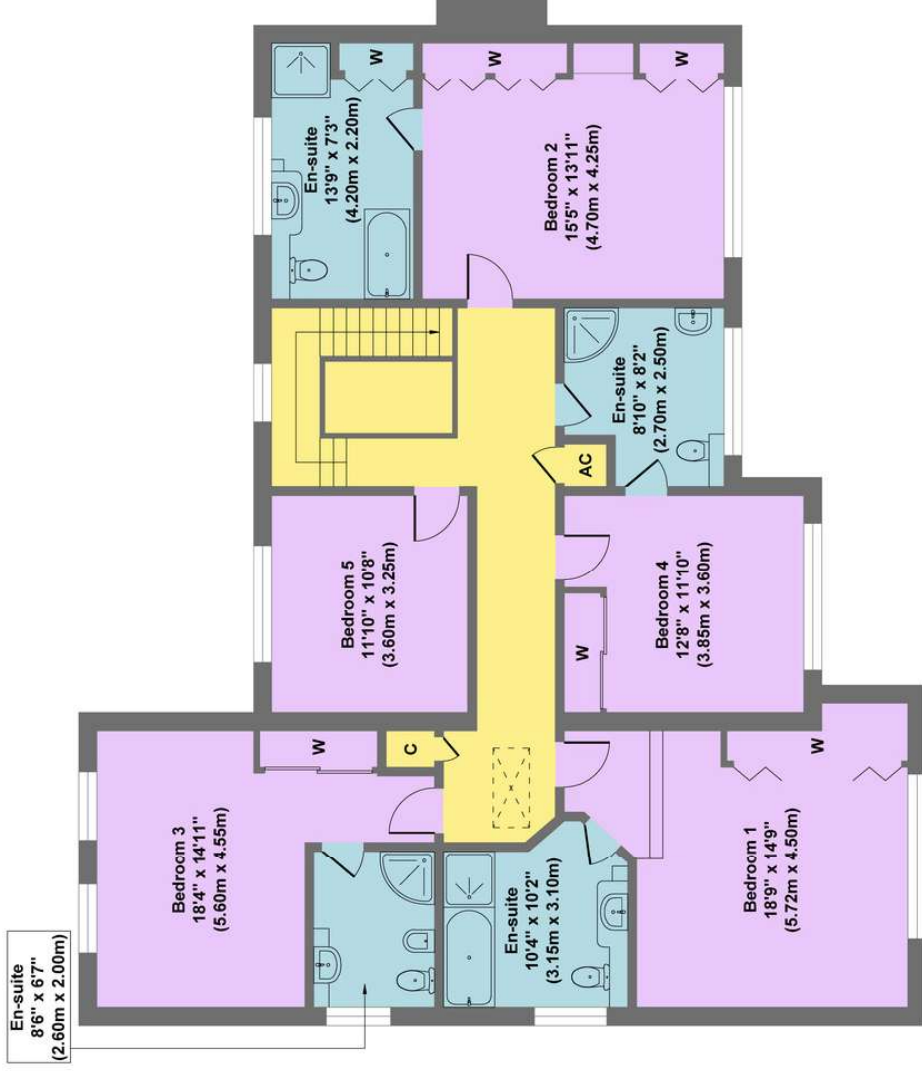




64 Cortworth Road



Ground Floor
 Approximate Floor Area
 2345 sq.ft
 (217.83 sq.m.)



First Floor
 Approximate Floor Area
 1657 sq.ft
 (153.95 sq.m.)

Approx. Gross Internal Floor Area 4002 sq.ft / 371.78 sq.m

Illustration for identification purposes only. Measurements are approximate, not to scale



For further information please
telephone 0114 2683241 or email

James Mee - james.mee@saxtonmee.co.uk
or Louise Downs - louise.downs@saxtonmee.co.uk

While we endeavour to make our sales particulars fair, accurate and reliable, they are only a general guide to the property and, accordingly, if there is any point, which is of particular importance to you, please contact the relevant office. SERVICES: The Agents have not tested any apparatus, equipment, fittings or services and so cannot verify they are in working order. The buyer is advised to obtain verification. MEASUREMENTS: Please note all the measurement details are approximate and should not be relied upon as exact. FLOORPLANS; Plans are for guidance purposes only and under no circumstances should they be relied upon for use in planning carpets and other such fixtures, fittings or furnishings.