



Castilla Place  
Burton-On-Trent





### Property Description

Burchell Edwards are delighted to market this 3 bedroom Detached family home. The property is situated on a popular estate located closely to Burton town centre. The property offers a double drive offering plenty of off road parking space to the front of the house, as well as access to the property's garage. The property itself is finished to a lovely standard and boasts a downstairs consisting of: a wonderful living room, a spacious kitchen/diner, another good sized reception room that could be used in a multitude of ways as well as a downstairs W/C. The first floor of the property greets you with a spacious landing that contains a storage cupboard and provides access to the property's 3 double bedrooms and the property's modern family bathroom. The master bedroom contains its own personal en suite and built in wardrobes making it a desirable room of this lovely property. The family bathroom has been extended and has been completed to an immaculate standard with a free standing bath tub and separate walk in shower, providing the ultimate relaxation spot. Outside to the rear is an enclosed garden which contains a spacious patio slabbed seating area, an artificial lawn patch as well as access to an outside reception room which has been converted from the garage. Viewing of this property is essential!

### Entrance Hallway

Door to front elevation, central heating radiator and carpet.

### Guest W.C

Window to rear elevation, W.C, wash hand basin, central heating radiator and wooden flooring.

### Study/ Diner

10' 3" x 8' 7" ( 3.12m x 2.62m )  
Window to front elevation, central heating radiator, tiled flooring and door into kitchen.

### Kitchen

13' 5" x 12' 10" max ( 4.09m x 3.91m max )  
Window to rear elevation, door to rear elevation, a range of wall and base units with

work surface over incorporating a sink with drainer unit, integrated oven, hob and dishwasher, tiled flooring, central heating radiator, space and plumbing for washing machine.

### Lounge

22' 5" x 11' 3" ( 6.83m x 3.43m )  
Window to front elevation, door to rear elevation, two central heating radiators and carpet.

### Landing

Carpet, loft access, central heating radiator, storage cupboard and all doors off.

### Bedroom One

11' 5" x 11' plus wardrobes ( 3.48m x 3.35m plus wardrobes )  
Window to front elevation, central heating radiator, wooden flooring and two integrated wardrobes.

### En-Suite

Window to front elevation, W.C, wash hand basin, shower, spotlights, central heating radiator and wooden flooring.

### Bedroom Two

13' 2" x 10' 5" ( 4.01m x 3.17m )  
Window to front elevation, central heating radiator and carpet.

### Bedroom Three

11' 4" x 8' 11" ( 3.45m x 2.72m )  
Window to rear elevation, central heating radiator and carpet.

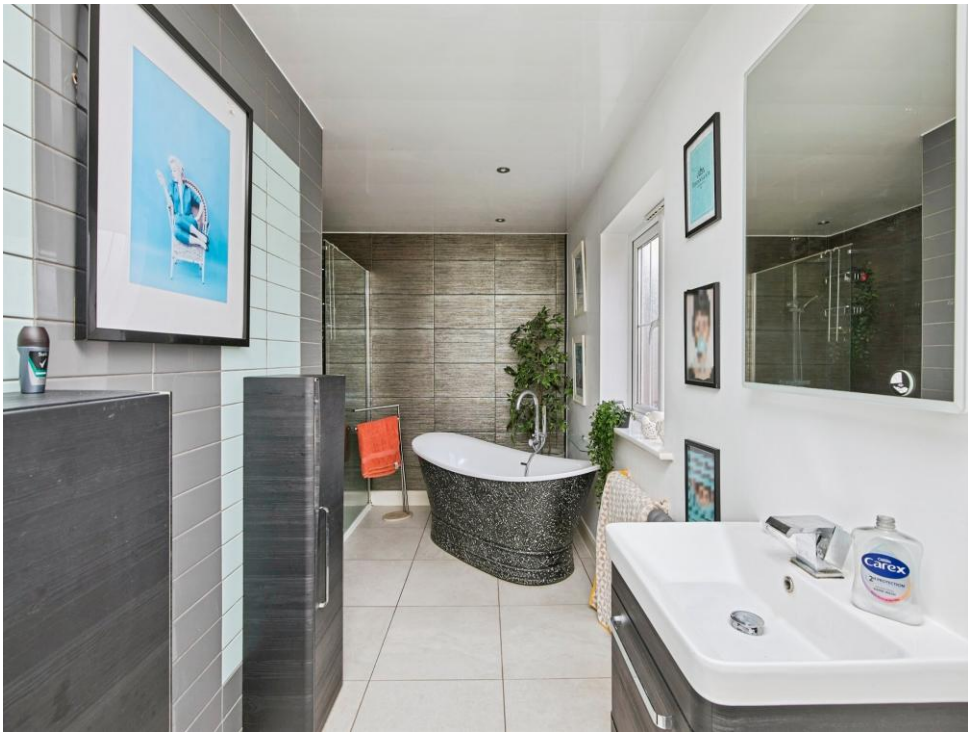
### Bathroom

Two windows to rear elevation, W.C, wash hand basin, walk in shower, freestanding bath, two central heating radiators, spotlights and tiled flooring.

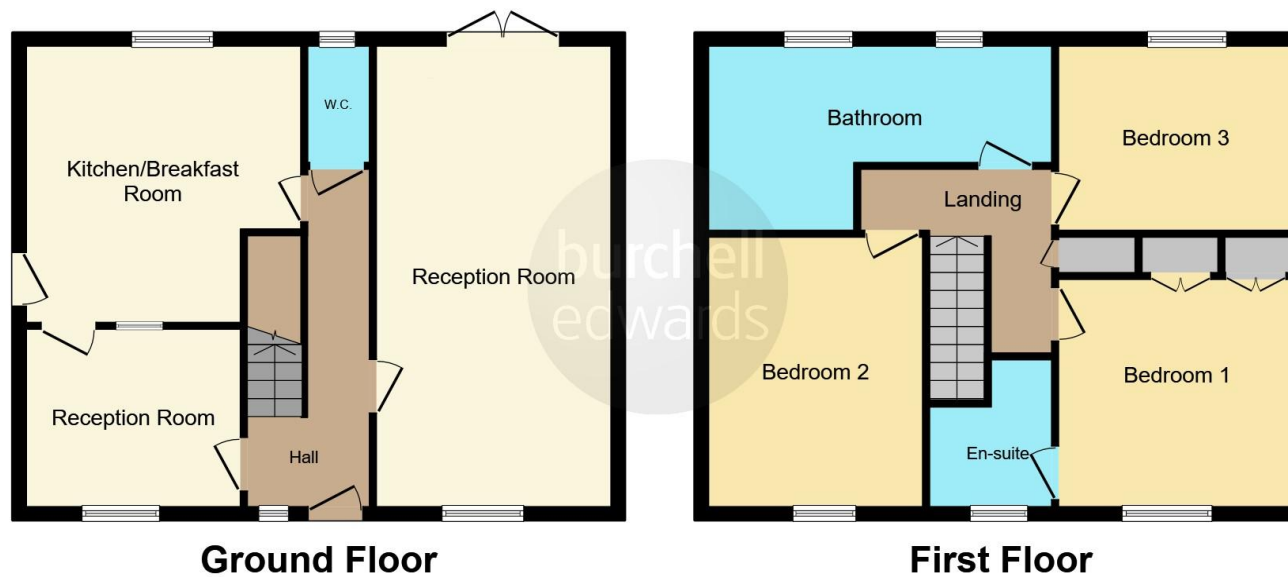
## Rear Garden

Slabbed patio area, artificial lawn, access to garage.









This floor plan is for illustrative purposes only. It is not drawn to scale. Any measurements, floor areas (including any total floor area), openings and orientation are approximate. No details are guaranteed, they cannot be relied upon for any purpose and they do not form part of any agreement. No liability is taken for any error, omission or misstatement. A party must rely upon its own inspection(s). Powered by [www.focalagent.com](http://www.focalagent.com)

To view this property please contact Burchell Edwards on

**T 01283 530 169**  
**E [burton@burchelledwards.co.uk](mailto:burton@burchelledwards.co.uk)**

Britannia House Station Street  
 BURTON-ON-TRENT DE14 1AN

EPC Rating: C    Council Tax  
 Band: D

Tenure: Freehold

**view this property online [burchelledwards.co.uk/Property/BUT211014](http://burchelledwards.co.uk/Property/BUT211014)**



1. MONEY LAUNDERING REGULATIONS Intending purchasers will be asked to produce identification documentation at a later stage and we would ask for your co-operation in order that there will be no delay in agreeing the sale. 2. These particulars do not constitute part or all of an offer or contract. 3. The measurements indicated are supplied for guidance only and as such must be considered incorrect. Potential buyers are advised to recheck measurements before committing to any expense. 4. We have not tested any apparatus, equipment, fixtures, fittings or services and it is in the buyers interest to check the working condition of any appliances.

Burchell Edwards is a trading name of Connells Residential which is registered in England and Wales under company number 1489613, Registered Office is Cumbria House, 16-20 Hockliffe Street, Leighton Buzzard, Bedfordshire, LU7 1GN. VAT Registration Number is 500 2481 05.

**See all our properties at [www.burchelledwards.co.uk](http://www.burchelledwards.co.uk) | [www.rightmove.co.uk](http://www.rightmove.co.uk) | [www.zoopla.co.uk](http://www.zoopla.co.uk)**

Property Ref: BUT211014 - 0006