



## The Colonnades, W2

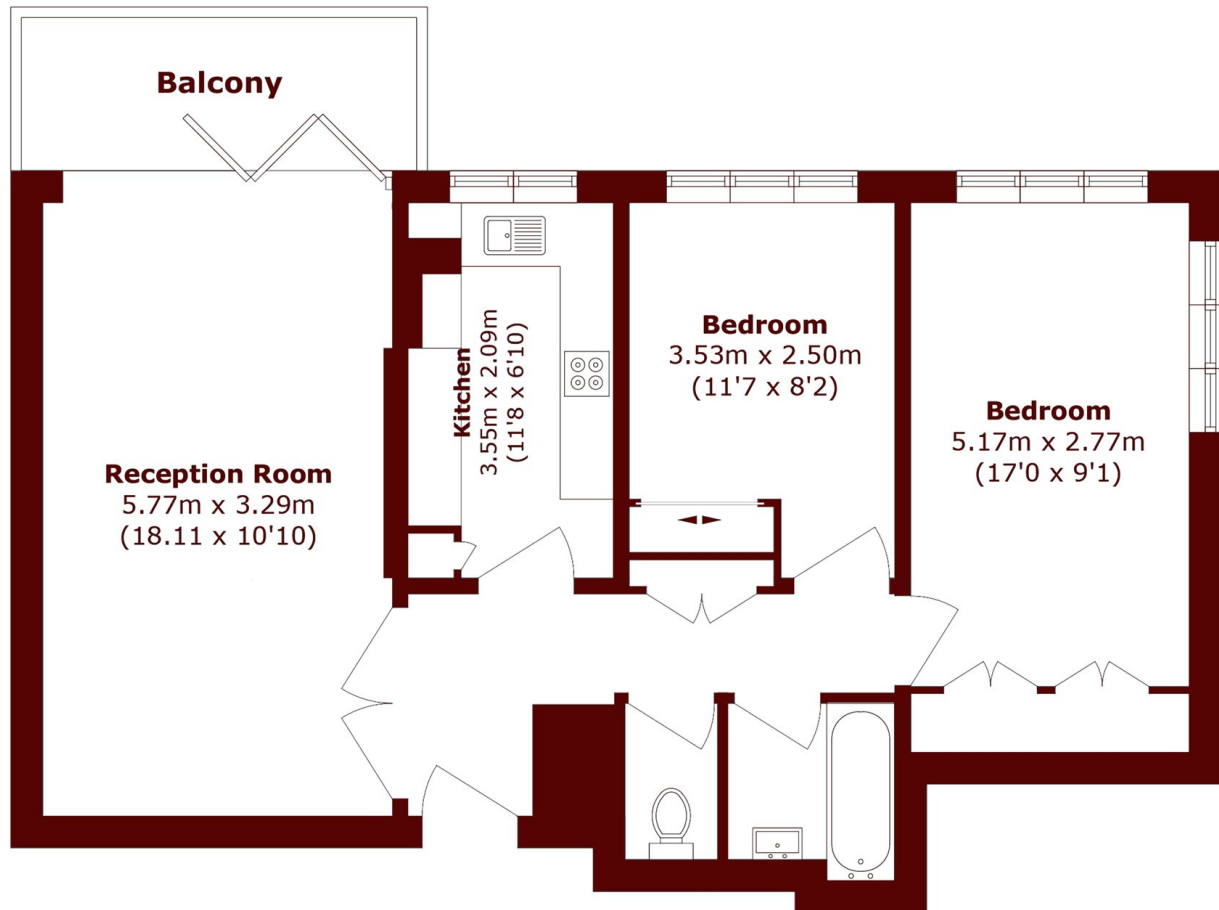
£650 per week (£2,816 pcm)



- Two Bedrooms
- Great Condition

- Balcony
- Lift/Porter

- Sought After Development
- Superb Location



## Fourth Floor

Total area (approx.): 61.7 sq. m (664.1 sq. ft)

Balcony area (approx.): 5.3 sq. m (57.0 sq. ft)

### Marsh & Parsons Notting Hill

2-6 Kensington Park Road,  
London, W11 3BU  
020 7313 2890