



OVER 60?

Secure this property
for up to **59% less!**

Price

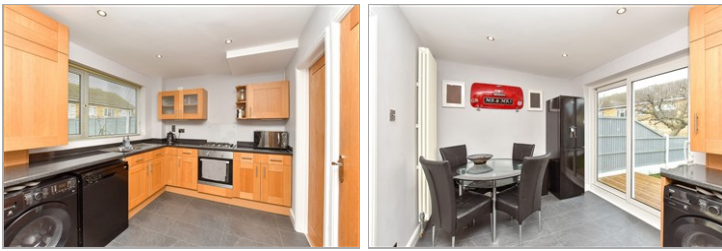
£250,000

Freehold

3x  1x  1x 

**Blythe Close,
Sittingbourne, Kent,
ME10**

Wards
Helping you move forwards



Main features

- Garage en-bloc
- Situated in a cul-de-sac location
- Move in ready
- Ideal first time buy or buy-to-let investment
- A must view

Accommodation

GROUND FLOOR

Hallway

Lounge: 13'8 x 11'0 (4.17m x 3.36m)

Kitchen/Diner: 17'1 x 8'6 (5.21m x 2.59m)

FIRST FLOOR

Landing

Bedroom 1: 11'7 x 10'3 (3.53m x 3.13m)

Bedroom 2: 11'8 x 10'6 (3.56m x 3.20m)

Bedroom 3: 8'8 x 8'3 (2.64m x 2.52m)

Bathroom

OUTSIDE

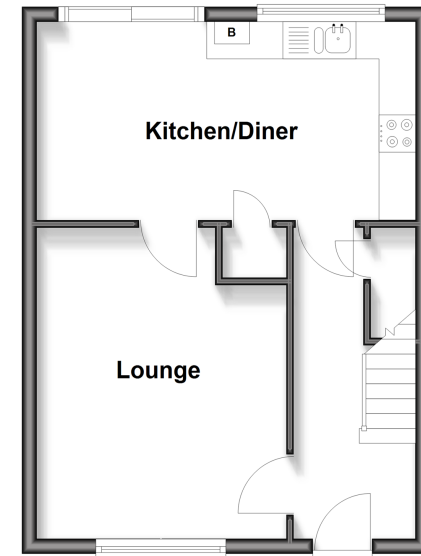
Front Garden

Rear Garden

Garage en-bloc

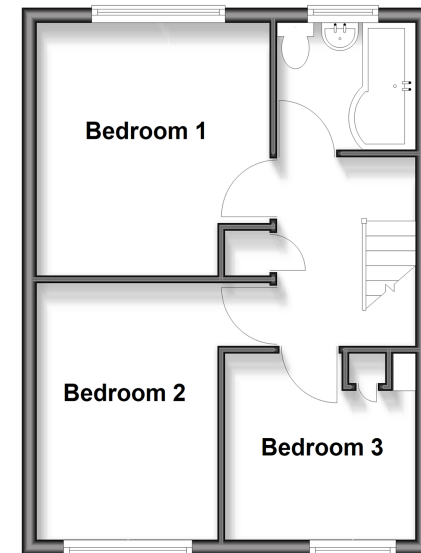
Ground Floor

Approx. 36.1 sq. metres (388.2 sq. feet)



First Floor

Approx. 36.1 sq. metres (388.2 sq. feet)



Call Sittingbourne - 01795 427272 ■ wardsof Kent.co.uk

- Legal advice should be taken to verify fixtures/fittings, planning, alterations and/or lease details
- Appliances & services are untested, dimensions are approximate and floor plans are not to scale
- Through a Homewise Home For Life Plan people aged 60+ can secure this property for up to 59% less, by purchasing a Lifetime Lease



11738991/20260131/JS/MC1