



WentWorth
Estate Agents



37 The Stoneworks, Neston, SN13 9ZE

- Four bedroom detached family home
- Spacious and flexible living
- Master and second bedroom with en-suites
- Generous kitchen/diner and utility room
- Two reception rooms
- Garage and driveway parking
- Mediterranean style rear garden
- Situated opposite the wooded green
- Superb Village location

Price guide £550,000

Location

The Stoneworks is a small development situated in the highly desirable Village of Neston, located just 2 miles outside of the picturesque and historic market Town of Corsham. Surrounded by countryside and woodlands, Neston is ideal for those who enjoy outdoor pursuits. The Village is very well served by a range of amenities including an excellent primary school, pre-school, Neston Country Pub, Village hall, Church and playing fields. Just a few minutes drive away is Corsham, a charming North Wiltshire Town with an excellent range of facilities including many specialist shops and cafes. There is a good choice of schooling within the Town including Heywood Prep School, several primary schools and Corsham Secondary School. Corsham is served with a doctors' surgery, a wide range of sporting facilities including Springfield leisure centre, and thriving clubs such as cricket, football and rugby. The City of Bath is within an easy 20 minute drive and offers excellent cultural, architectural and leisure facilities. Communication links are excellent with the M4/M5 motorways within easy reach providing easy access to London, Bristol, the South West and the Midlands. The larger market Town of Chippenham is approximately 4 miles away with further amenities including mainline railway station with commutes of around 70 minutes into London Paddington.

Internal Description

Entering this superb family home, you are greeted by a bright and spacious hallway. The living room is to the rear of the property and is a warm and inviting space, ideal for relaxing with friends and family, There is a feature woodburning stove, which adds to the ambience, and patio doors leading out into the garden. A second reception is to be found at the front of the property and offers flexibility to be utilised as a dining room, study or playroom. The kitchen/diner is the heart of the home and offers plenty of space for family time. The well-appointed kitchen offers generous storage and the wall and base units are complemented by the worktops and flooring. The utility room leads from the kitchen and has a door out into the rear garden. A guest cloakroom is also to be found on the ground floor. To the first floor you will find a spacious landing, with loft access and a linen cupboard, The master suite is a generous double with an en-suite as is the second bedroom. The third and fourth bedroom are both doubles and are serviced by the family bathroom.

External Description

Externally to the front you will find attractive planting either side of the front door. The property enjoys an attractive outlook, with a communal wooded green situated directly opposite. To garden to the rear has been landscaped to create a tranquil Mediterranean style space, perfect for entertaining or relaxing. Flanked by stone walling and fencing, the garden benefits from an attractive pergola and raised beds. There is access into the garage, which has power, light and an EV charger.

Additional Information

Tenure - Freehold
Council Tax Band - E
EPC Rating - C

NB: This information has been provided to us by the seller. We would always still advise you to do your own due diligence.

Agents Note

The Property Misdescriptions Act 1991. The Agent has not tested any apparatus, equipment, fixtures and fittings or services and so cannot verify that they are in working order or fit for the purpose. A Buyer must obtain verification from their Legal Advisor or Surveyor. Stated measurements are approximate and any floor plans for guidance only. References to the tenure of a property are based on information supplied by the Seller. The Agent has not had sight of the title documents and a Buyer must obtain verification from their Legal Advisor.

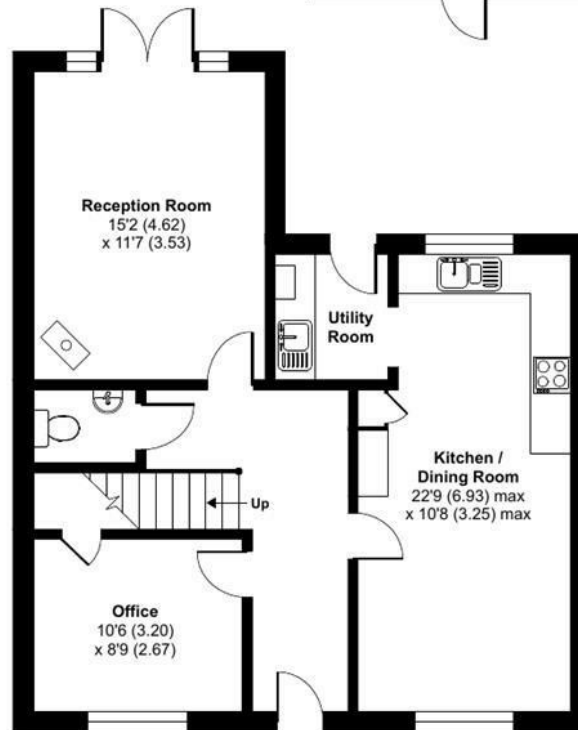
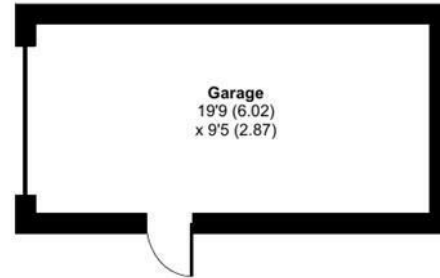
The Stoneworks, Neston, Corsham, SN13

Approximate Area = 1454 sq ft / 135 sq m

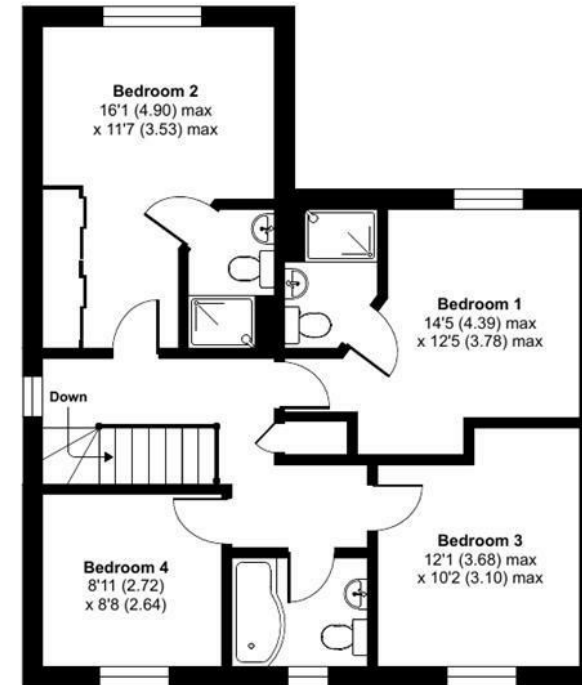
Garage = 188 sq ft / 17.5 sq m

Total = 1642 sq ft / 152.5 sq m

For identification only - Not to scale



GROUND FLOOR



FIRST FLOOR

Energy Efficiency Rating

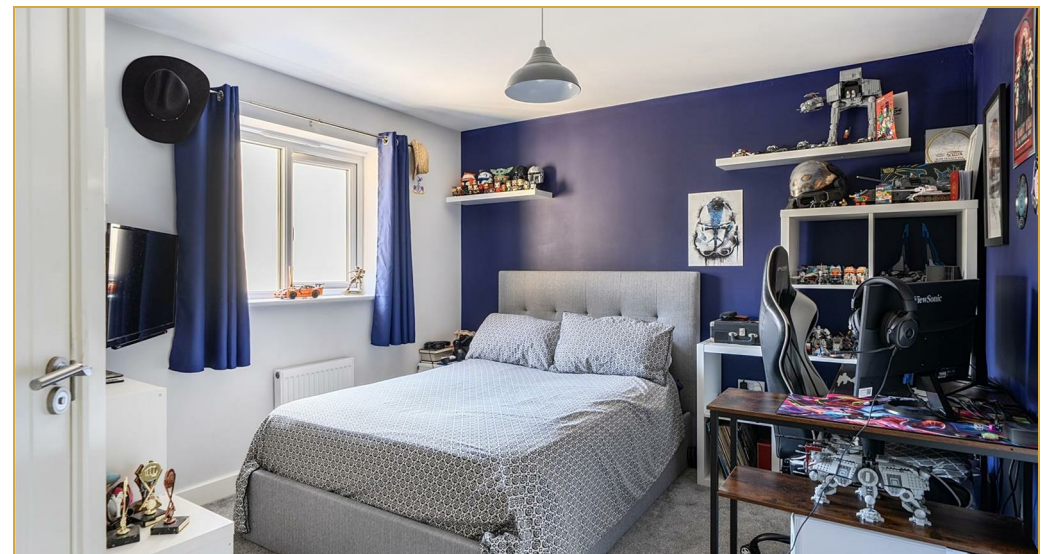
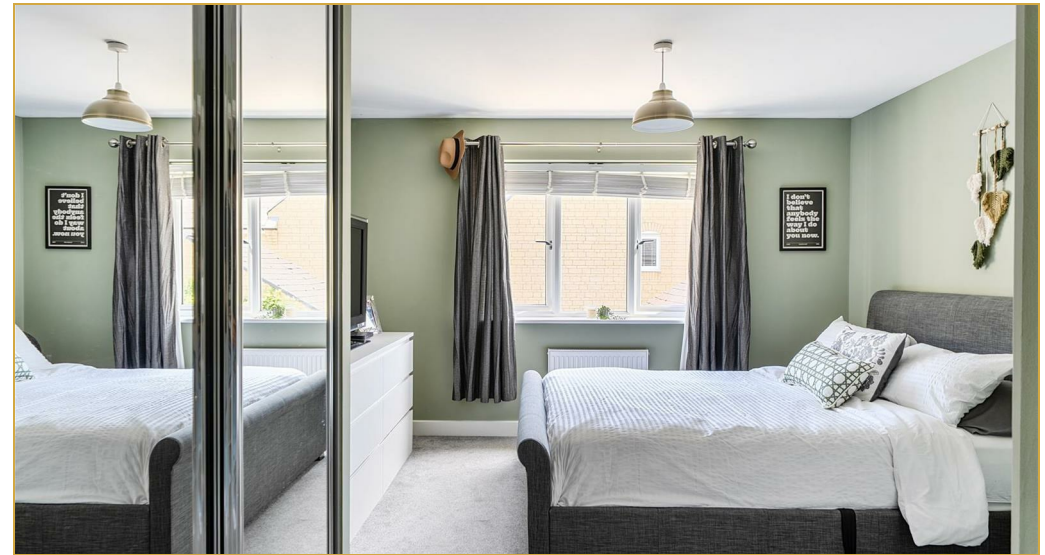
	Current	Potential
Very energy efficient - lower running costs		
(92 plus) A		
(81-91) B		
(69-80) C	78	81
(55-68) D		
(39-54) E		
(21-38) F		
(1-20) G		
Not energy efficient - higher running costs		
England & Wales	EU Directive 2002/91/EC	



Floor plan produced in accordance with RICS Property Measurement 2nd Edition, Incorporating International Property Measurement Standards (IPMS2 Residential). © nichecom 2026. Produced for WentWorth Estate Agents (Bath). REF: 1483222







Wentworth Estate Agents

25 Monmouth Street, Bath, BA1 2AP

01225 904904

bath@wentworthea.com

www.wentworthea.com

Important Notice 1. Particulars: These particulars are not an offer or contract, nor part of one. You should not rely on statements by Wentworth Estate Agents in the particulars or by word of mouth or in writing ("information") as being factually accurate about the property, its condition or its value. Neither Wentworth Estate Agents nor any joint agent has any authority to make any representations about the property, and accordingly any information given is entirely without responsibility on the part of the agents, seller(s) or lessor(s). 2. Photos etc: The photographs show only certain parts of the property as they appeared at the time they were taken. Areas, measurements and distances given are approximate only. 3.Regulations etc: Any reference to alterations to, or use of, any part of the property does not mean that any necessary planning, building regulations or other consent has been obtained. A buyer or lessee must find out by inspection or in other ways that these matters have been properly dealt with and that all information is correct.

