



Langley Close, Wirral CH63 9YN

welcome to

Langley Close, Wirral

This three-bedroom End terrace house is being sold with no onward chain! Situated on the ever-popular Poulton Royd Estate. With idyllic gardens to the front a private low maintenance garden to the rear, this is not one to be missed.



Property Description

In brief, the property comprises of a large living room with a kitchen diner across the back of the property. The kitchen offers plenty of counter and cupboard space for all your culinary needs, with a cupboard under the stairs for additional storage. Upstairs, two double bedrooms and a generously sized single are serviced by a three-piece suite family bathroom with overhead shower.

Heading outside through the patio door in the kitchen, the rear garden is sunny low-maintenance heaven. With a south-facing aspect you can enjoy the sun's rays right into the evening. To the front manicured lawns and walk ways.



view this property online [jonesandchapman.co.uk/Property/BEB110809](https://www.jonesandchapman.co.uk/Property/BEB110809)



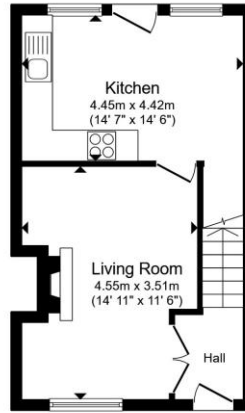
welcome to

Langley Close, Wirral

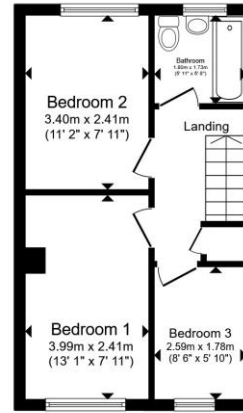
- Three bedroom family home
- End of terrace
- South-facing, low maintenance garden
- Garage
- No onward chain

Tenure: Freehold EPC Rating: D
Council Tax Band: B

£200,000



Ground Floor



First Floor

Total floor area 63.9 m² (688 sq.ft.) approx
This floor plan is for illustrative purposes only. It is not drawn to scale. Any measurements, floor areas (including any total floor area), openings and orientation are approximate. No details are guaranteed, they cannot be relied upon for any purpose and they do not form part of any agreement. No liability is taken for any error, omission or misstatement. A party must rely upon its own inspection(s). Powered by www.propertybox.io

jones & chapman



Please note the marker reflects the postcode not the actual property

view this property online [jonesandchapman.co.uk/Property/BEB110809](https://www.jonesandchapman.co.uk/Property/BEB110809)



Property Ref:
BEB110809 - 0002

1. MONEY LAUNDERING REGULATIONS Intending purchasers will be asked to produce identification documentation at a later stage and we would ask for your co-operation in order that there is no delay in agreeing the sale. 2. These particulars do not constitute part or all of an offer or contract. 3. The measurements indicated are supplied for guidance only and as such must be considered incorrect. Potential buyers are advised to recheck measurements before committing to any expense. 4. We have not tested any apparatus, equipment, fixtures or services and it is in the buyers interest to check the working condition of any appliances. 5. Where an EPC, or a Home Report (Scotland only) is held for this property, it is available for inspection at the branch by appointment. If you require a printed version of a Home Report, you will need to pay a reasonable production charge reflecting printing and other costs. 6. We are not able to offer an opinion either written or verbal on the content of these reports and this must be obtained from your legal representative. 7. Whilst we take care in preparing these reports, a buyer should ensure that his/her legal representative confirms as soon as possible all matters relating to title including the extent and boundaries of the property and other important matters before exchange of contracts.

jones & chapman



0151 644 8666



Bebington@jonesandchapman.co.uk



4 Church Road, BEBINGTON, WIRRAL,
Merseyside, CH63 7PH



[jonesandchapman.co.uk](https://www.jonesandchapman.co.uk)