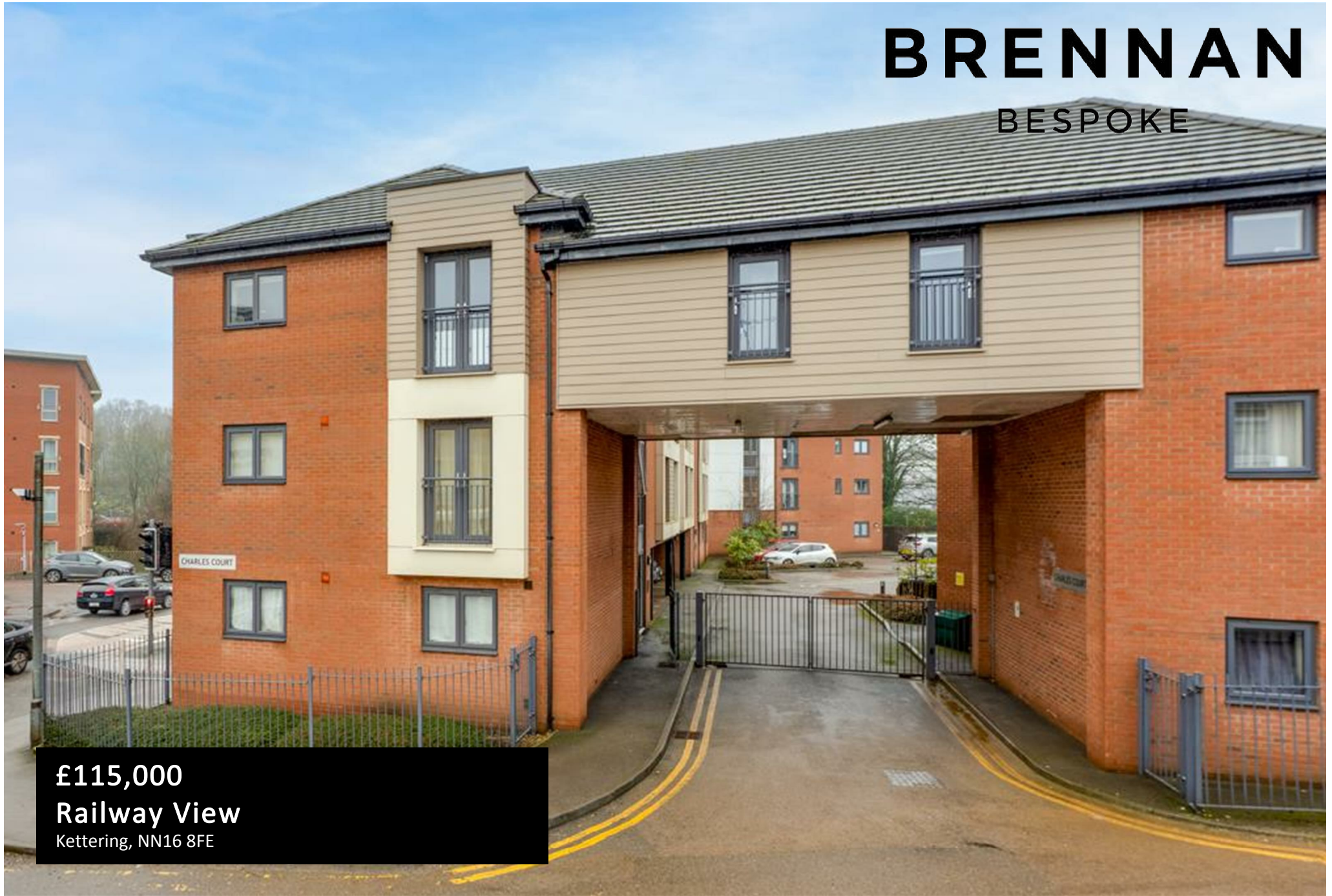


# BRENNAN

BESPOKE



**£115,000**

**Railway View**

Kettering, NN16 8FE

## PROPERTY SUMMARY

A superb opportunity to secure a spacious one-bedroom first floor flat in Charles Court, right in the heart of Kettering town centre. Offering open plan living, a generous double bedroom, and a modern family bathroom, this property is perfect for first-time buyers, professionals, or investors looking for comfort and convenience in a prime location. Step into a bright and welcoming open plan living and kitchen space—perfect for relaxing, dining, or entertaining. The large double bedroom provides a peaceful retreat, while the modern family bathroom is finished to a high standard. Located in the heart of Kettering, Charles Court offers immediate access to the town's shops, restaurants, and leisure facilities. The hospital and railway station are both within easy reach, making this flat ideal for commuters and healthcare professionals.

1



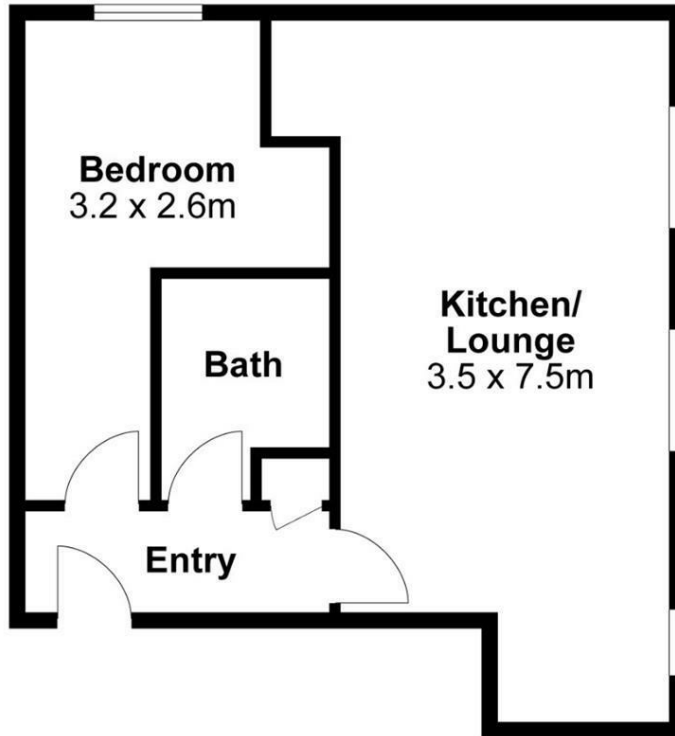
1



1







For identification only not to scale

Internal Area Approx. : 43m<sup>2</sup>

**BRENNAN**  
BESPOKE

**BRENNAN**  
BESPOKE

**OFFICE ADDRESS**

BRENNAN BESPOKE  
2 The Tithe Barn Glendon Lodge Farm  
Glendon  
Kettering  
Northamptonshire  
NN14 1QF

**OFFICE DETAILS**

01536 904400  
info@brennanbespoke.co.uk  
<https://www.brennanbespoke.co.uk>

**LOCAL AUTHORITY**

**TENURE**

Leasehold

**COUNCIL TAX BAND**

A

**VIEWINGS**

By prior appointment only

Energy Efficiency Rating		
	Current	Potential
<i>Very energy efficient - lower running costs</i>		
(92 plus) <b>A</b>		
(81-91) <b>B</b>		
(69-80) <b>C</b>		
(55-68) <b>D</b>		
(39-54) <b>E</b>		
(21-38) <b>F</b>		
(1-20) <b>G</b>		
<i>Not energy efficient - higher running costs</i>		
<b>England &amp; Wales</b>	EU Directive 2002/91/EC	

Agents Note: Whilst every care has been taken to prepare these particulars, they are for guidance purposes only. All measurements are approximate and are for general guidance purposes only and whilst every care has been taken to ensure their accuracy, they should not be relied upon and potential buyers/tenants are advised to recheck the measurements