



Albion Road, TW2

£2,600 Per calendar month

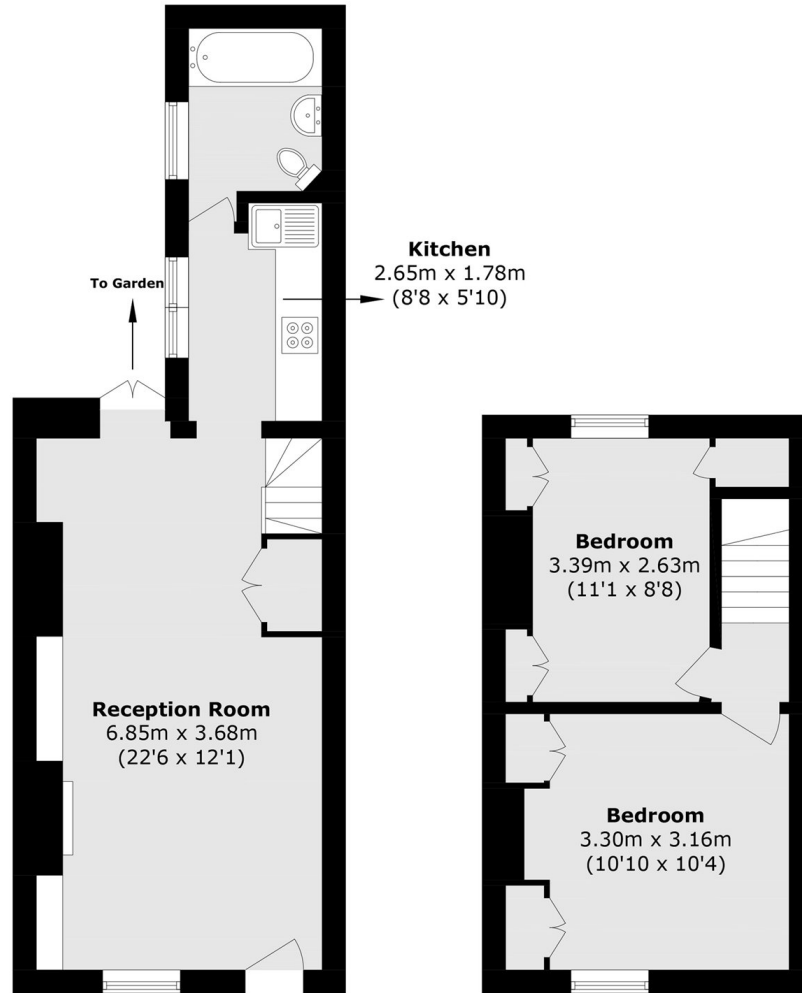
Set on one of Twickenham's most desirable residential roads, this beautifully presented family home on Albion Road offers a perfect blend of period charm and contemporary living. Thoughtfully extended and finished to a high standard throughout, the property provides bright and versatile accommodation ideal for modern family life, with stylish interiors and an abundance of natural light.

Ideally located moments from Twickenham Green, the property enjoys easy access to a range of independent cafés, restaurants and local amenities, as well as excellent transport links into Central London via Twickenham and Strawberry Hill stations. The area is also highly regarded for its outstanding local schools, making this an exceptional opportunity for families seeking a prime Twickenham location.

Features

- Two Bedroom Cottage
- Period Features
- Close to Twickenham Green
- Private Garden
- Great Transport Links
- Bright

Albion Road, Twickenham, TW2



Ground Floor

First Floor

Total Area (approx.): 59.7 sq. m (642.6 sq. ft)