



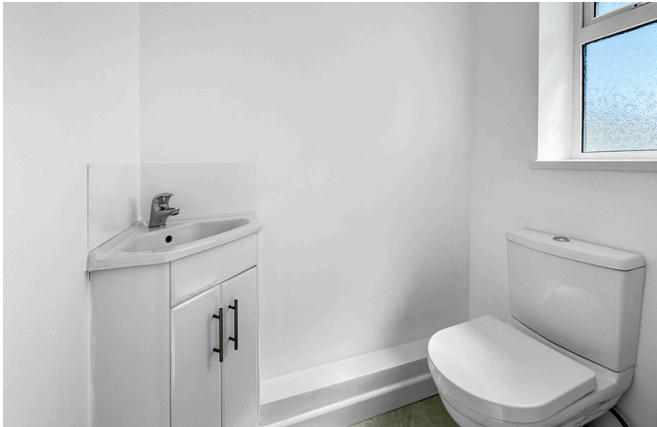
Bush Avenue
Little Stoke, Bristol BS34

James Crumpton
The **Bristol** Property Expert

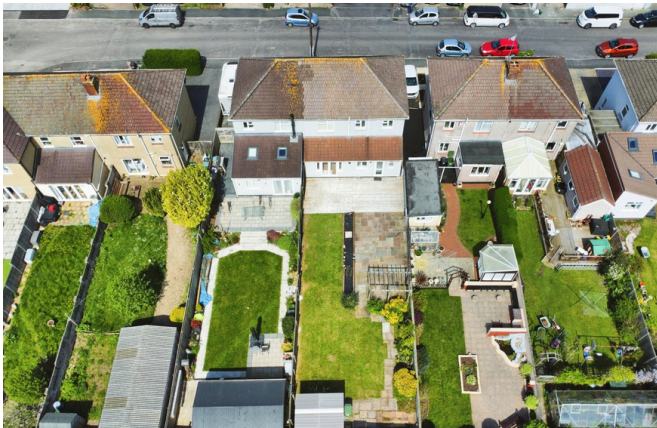
 **The
Property
Experts**











Offered to the market with no onward chain, this spacious and well-presented four-bedroom semi-detached home on the ever-popular Bush Avenue is a fantastic opportunity for buyers seeking a versatile family home in a highly desirable part of Little Stoke.

The accommodation begins with a welcoming entrance hall leading into a generous living space, ideal for both relaxing and entertaining. To the rear, the home opens into a sociable kitchen and dining area, perfectly suited to modern family life, with direct access out to the garden.

The layout offers a great balance of space and functionality, making it ideal for day-to-day living as well as hosting family and friends.

Upstairs, the property offers four well-proportioned bedrooms, providing flexible space for growing families, home working, or guest accommodation, along with an ensuite and family bathroom serving the upper floor.

Externally, the home truly comes into its own with a beautiful south-facing rear garden, ideal for enjoying the sunshine throughout the day. Backing onto allotments, the garden offers a good degree of privacy and a pleasant open outlook, creating a perfect setting for outdoor dining, entertaining, or simply unwinding.

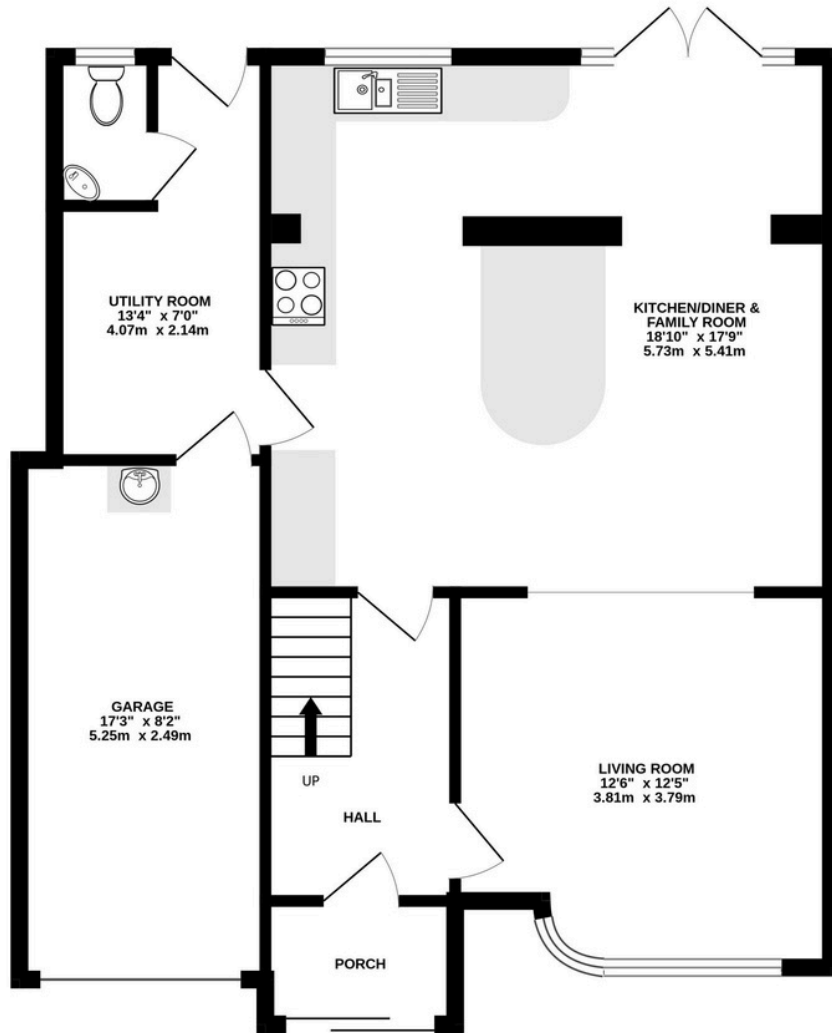
Bush Avenue is widely regarded as one of Little Stoke's most sought-after roads, known for its strong community feel and consistent demand from buyers.

The location is ideally positioned for both families and commuters, with excellent access to Bristol Parkway Station offering direct routes into Bristol, Bath and beyond. Major road networks including the M4, M5 and M32 are all within easy reach, while local amenities, schools and leisure facilities are close by.

The open green spaces of Forty Acres are also just a short distance away, perfect for walks and outdoor activities. This is a superb opportunity to secure a well-located, spacious home in a popular residential setting, ideal for a wide range of buyers.



GROUND FLOOR



1ST FLOOR

