



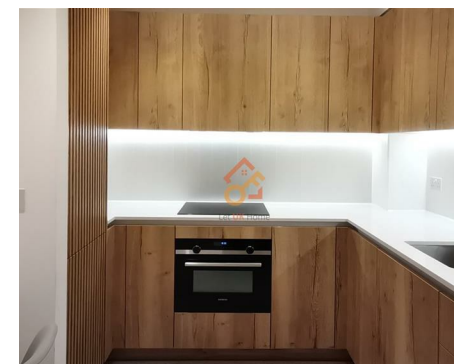
Let **UK** Home

1 Bedrooms

Flat - Studio

Located in London

**£2,500 Per Month**



[info@letukhome.co.uk](mailto:info@letukhome.co.uk)

<https://www.letukhome.co.uk/>

01795 358 886



# 5 Tapestry Way London

E1 2FQ



Let UK Home are excited to offer this spectacular studio apartment in the heart of Jacquard Point part of the Silk District.

The flat comprises a spacious open kitchen with a stylishly attached dining area, a magnificent living room leading to a private balcony, one bright bedroom with built-in wardrobes and one modern bathroom.

The residents of this apartment will enjoy a range of amenities, including concierge service, gym, spinning room, screening room, terrace, as well as flexible and designed work and study space.

The apartment is surrounded by a number of prestigious universities, especially within walking distance to Queen Mary University of London's Whitechapel Campus and main campus. Additionally, ten world-renowned universities, including University College London, King's College London, and Central Saint Martins, can be reached quickly.

The famous Whitechapel Gallery, the bustling Brick Lane Market and the enduring Columbia Road Flower Market are all within walking distance. Shoreditch's fashion boutiques, coffee shops, alley food, etc. are all within easy reach.

This apartment is just a street away from Whitechapel Underground Station, with access to the Elizabeth Line, Hammersmith & City Line, and Overground. Key transport hubs can be reached quickly, including Victoria Station, King's Cross St. Pancras Station, Paddington Station, and Stratford International Station, making it a well-connected location.

# 5 Tapestry Way London

£2,500 Per Month



- 6th Floor
- 24h Security
- Cinema
- EPC Rating: B

- Concierge Service
- The Gym
- Co-working Space



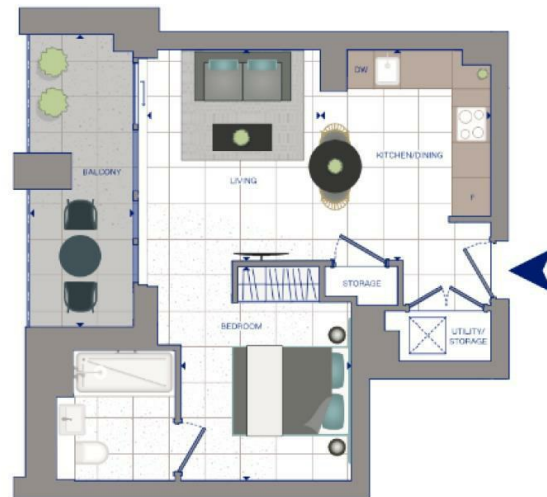


Let **UK** Home

3F 2 Eastbourne Terrace  
 Paddington  
 London  
 W2 6LG

01795 358 886

info@letukhome.co.uk



- DW DISHWASHER  
洗碗机
- X WASHING MACHINE  
洗衣机
- F FRIDGE/FREEZER  
冰箱/冰柜
- TERRAZZO  
水磨石地板砖

Total internal area 室内总面积	40.40 sq m 平方米	435 sq ft 平方英尺
LIVING 客厅	2.92 m x 3.55 m	9'7" x 11'8"
KITCHEN/DINING 厨房/餐厅	2.86 m x 3.55 m	9'4" x 11'8"
BEDROOM 卧室	2.86 m x 3.59 m	9'5" x 11'9"
Total external area 室外总面积		
BALCONY 阳台	1.75 m x 4.91 m	5'9" x 16'1"



## Council Tax Band: E

## Local Authority:

Agents Note: Whilst every care has been taken to prepare these particulars, they are for guidance purposes only. All measurements are approximate and are for general guidance purposes only and whilst every care has been taken to ensure their accuracy, they should not be relied upon and potential buyers/tenants are advised to recheck the measurements.

Energy Efficiency Rating		Current	Potential
Very energy efficient - lower running costs			
(92 plus) <b>A</b>			
(81-91) <b>B</b>			
(69-80) <b>C</b>		83	83
(55-68) <b>D</b>			
(39-54) <b>E</b>			
(21-38) <b>F</b>			
(1-20) <b>G</b>			
Not energy efficient - higher running costs			
<b>England &amp; Wales</b>	EU Directive 2002/91/EC		

<https://www.letukhome.co.uk/>