



Mervyn Road, TW17

£199,950

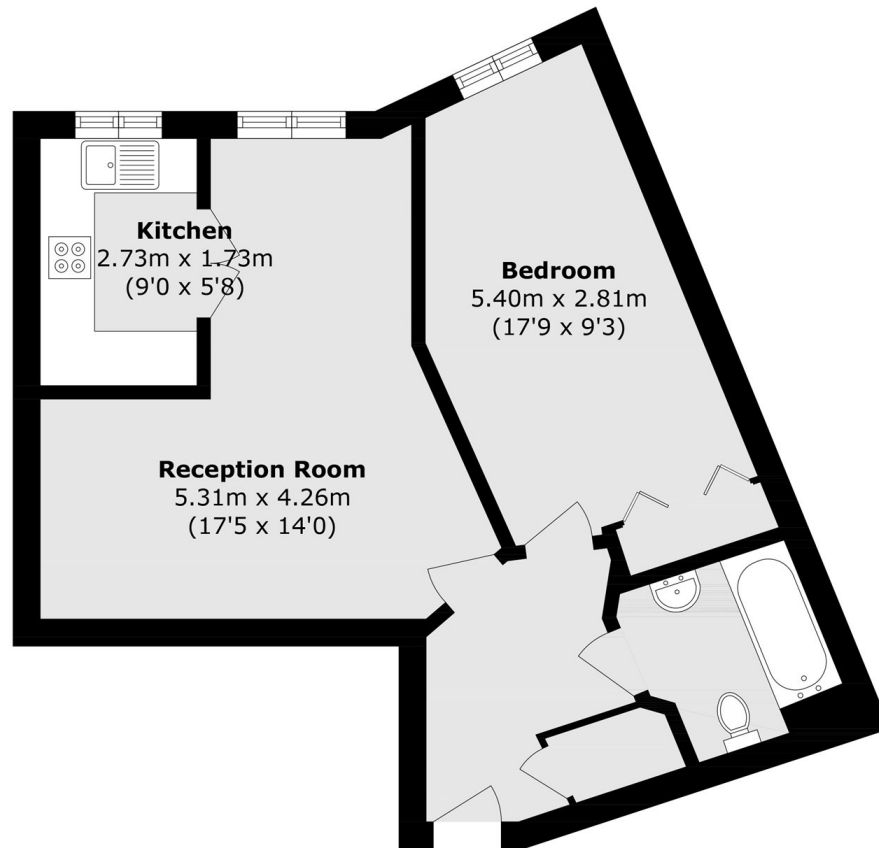
Spacious second floor over 60s apartment with lift access and park views. Recently refurbished, offering bright living space, fitted kitchen, double bedroom, and excellent communal facilities including gardens, lounge, guest suite, and on-site manager.

Mervyn Road is a fantastic location just off Shepperton High Street. Shepperton Station which provides a direct service to London Waterloo is approximately a third of a mile away.

Features

- Over 60's Apartment
- Resident & Visitor Parking
- Second Floor
- Lift Access
- Communal Gardens
- No Onward Chain

Mervyn Road, Shepperton, TW17



Total area (approx.): 49.2 sq. m (529.6 sq. ft)