



Connells

Vanguard Circle
Brooklands Milton Keynes



Property Description

A well-presented two-bedroom home offering bright and practical living throughout. The spacious lounge features double glazed windows, a newly fitted carpet, and plenty of room for a dining table, creating a comfortable and versatile living space.

The fitted kitchen includes an oven, extractor, double glazed window, and space for white goods.

Bedroom one is a generous double with two double glazed windows and a built-in wardrobe, while bedroom two is a well-proportioned room, also benefiting from two double glazed windows, a smaller built-in wardrobe, and space for a double bed.

The bathroom is fitted with a modern suite including a bath with shower over, WC, and wash hand basin.

Overall, a bright and well-laid-out home, ideal for comfortable everyday living.

Lounge

Bright reception room with double glazed windows, newly fitted carpet, and space for a dining table.

Kitchen

Fitted kitchen with oven, extractor, double glazed window, and space for white goods.

Bedroom One

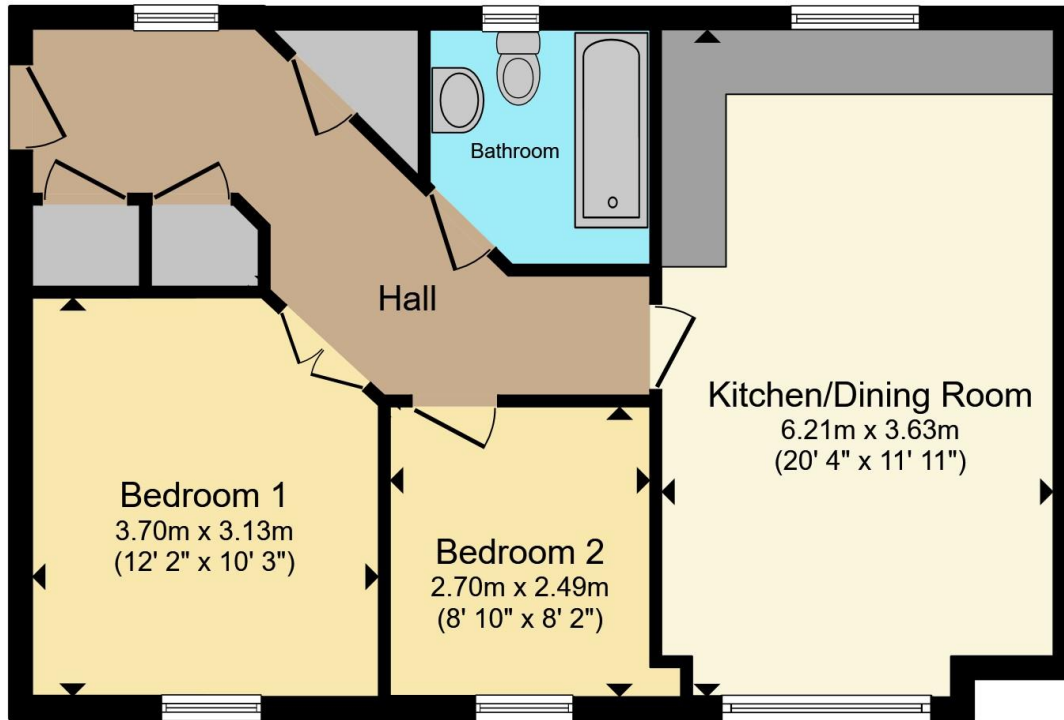
Spacious double bedroom with two double glazed windows, built-in wardrobe, and ample room for a double bed.

Bedroom Two

Versatile bedroom with two double glazed windows, built-in wardrobe, and space for a double bed.







Total floor area 58.1 m² (625 sq.ft.) approx

This floor plan is for illustrative purposes only. It is not drawn to scale. Any measurements, floor areas (including any total floor area), openings and orientation are approximate. No details are guaranteed, they cannot be relied upon for any purpose and they do not form part of any agreement. No liability is taken for any error, omission or misstatement. A party must rely upon its own inspection(s). Powered by www.propertybox.io



To view this property please contact Connells on

T 01908 691606

E walnuttree@connells.co.uk

26A Fyfield Barrow The Walnut Tree Local Centre Walnut Tree

EPC Rating: B

Council Tax Band: B

Service Charge: Ask Agent

Ground Rent: Ask Agent

Tenure: Leasehold

view this property online connells.co.uk/Property/WNT308237

This is a Leasehold property. We are awaiting further details about the Term of the lease. For further information please contact the branch. Please note additional fees could be incurred for items such as Leasehold packs.



1. MONEY LAUNDERING REGULATIONS Intending purchasers will be asked to produce identification documentation at a later stage and we would ask for your co-operation in order that there will be no delay in agreeing the sale. 2. These particulars do not constitute part or all of an offer or contract. 3. The measurements indicated are supplied for guidance only and as such must be considered incorrect. Potential buyers are advised to recheck measurements before committing to any expense. 4. We have not tested any apparatus, equipment, fixtures, fittings or services and it is in the buyers interest to check the working condition of any appliances.

Connells Residential is registered in England and Wales under company number 1489613, Registered Office is Cumbria House, 16-20 Hockliffe Street, Leighton Buzzard, Bedfordshire, LU7 1GN. VAT Registration Number is 500 2481 05.

See all our properties at www.connells.co.uk | www.rightmove.co.uk | www.zoopla.co.uk

Property Ref: WNT308237 - 0003