

28 Springbridge Road, Whalley Range, Manchester, M16 8PW



JP&Brimelow
ESTATE AGENTS



 4  2  2  C

VIDEO TOUR AVAILABLE A well-kept and spacious, FOUR BEDROOM, bay-fronted, semi-detached property. Located on a popular residential road off Wilbraham Road, here in Whalley Range.

Within a twenty-minute walk of the Metrolink Station at Morrisons on Wilbraham Road which gives you direct access into the City Centre/Media City, good secondary schools on your doorstep, Whalley Range cricket and tennis club are located nearby on Kingsbrook Road, close to universities, hospitals, and Manchester International Airport.

This traditional home is spread over two floors and in brief consists of: a porch, an entrance hall with two spacious storage areas, a good sized dining room with bay window to the front aspect, a lounge with views and access out into the rear enclosed garden, a fully fitted kitchen, a useful utility, and a W.C completing this floor.

Stairs leading up to the first floor landing reveal two good sized double bedrooms, a further two bedrooms, and a white four piece bathroom suite.

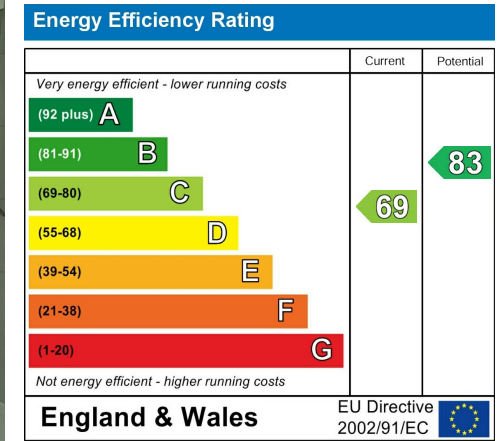
The property benefits from gas fired central heating, period features, high ceilings, a driveway, a useful garage, and a large enclosed rear garden.

£595,000



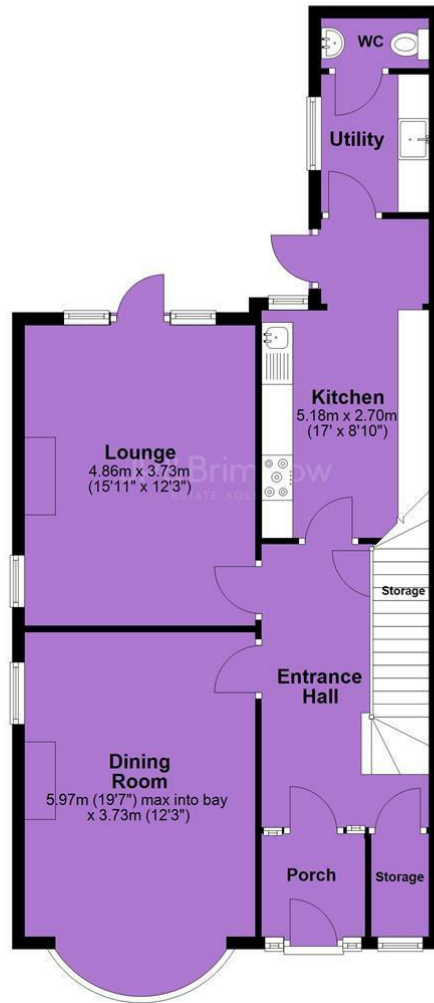


EPC Chart

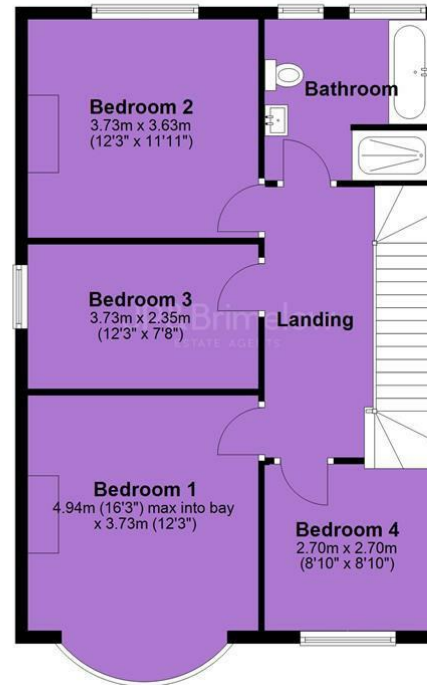


Tenure: Freehold Council Tax Band: C

Ground Floor



First Floor



JP & Brimelow Estate Agents Ltd
430 Barlow Moor Road, Manchester, M21 8AD
Tel: 0161 8822233
E: sales@jpbrimelow.co.uk www.jpandbrimelow.co.uk



JP & Brimelow
ESTATE AGENTS

NOTICE: JP & Brimelow Estate Agents Ltd for themselves and for the vendors or lessors of this property whose agents they are give notice that:

- (i) the particulars are set out as a general outline only for the guidance of intending purchasers or lessees, and do not constitute, nor constitute part of, an offer or contract;
- (ii) all descriptions, dimensions, references to the condition and necessary permissions for use and occupation, and other details are given in good faith and are believed to be correct but any intending purchasers or tenants should not rely on them as statements or representations of fact but must satisfy themselves by inspection or otherwise as to the correctness of each of them;
- (iii) no person in the employment of JP & Brimelow Estate Agents Ltd has any authority to make or give any representation or warranty whatever in relation to this property.

jpandbrimelowstateagents

@jpandbrimelow

