



NEWINGTON
LONDON

1 Bedrooms

Apartment

Located in London

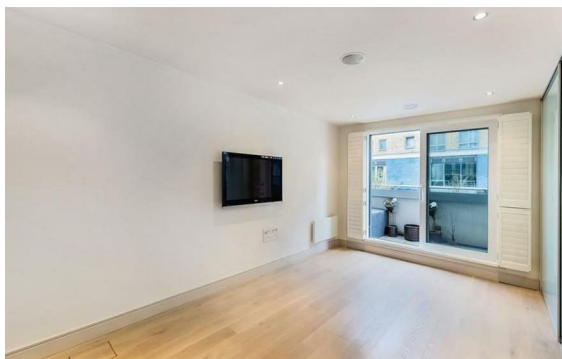
£570 Per Month



info@newingtonstates.com

<http://www.newingtonstates.com>

020 7724 2233



A beautifully presented one-bedroom apartment set within a modern and well-maintained building in the heart of Marylebone. Finished to a high specification, the property offers a bright open-plan reception area with a contemporary fitted kitchen, generous built-in storage, and a sleek, modern bathroom.

Further benefits include access to a private patio, providing a pleasant outdoor space. Ideally positioned close to Marylebone's boutique shops, cafés, and excellent transport links.

EPC: E

Energy Efficiency Rating: E

Agents Note: Whilst every care has been taken to prepare these particulars, they are for guidance purposes only. All measurements are approximate and are for general guidance purposes only and whilst every care has been taken to ensure their accuracy, they should not be relied upon and potential buyers/tenants are advised to recheck the measurements.

NEWINGTON LONDON

60 Upper Montagu Street

London

W1H 1SN

020 7724 2233

info@newingtonstates.com

<http://www.newingtonstates.com>