



**Torrington Place, WC1E**

**£2,000,000**

**Dexters**



## Torrington Place, WC1E

Available to the market for the first time in 50 years. A five double bedroom apartment in an Edwardian red-brick mansion block. Positioned on the fourth floor with lift access and a highly desirable south westerly aspect. Retains original period features and benefits a long lease to 2197.

The apartment has a large central hallway with a fireplace, dado rail and picture rail. The reception room has a large casement window overlooking Huntley Street and the central London skyline beyond. There are five double bedrooms. The kitchen has original tiling to the walls and leads to the dining room. There is a bathroom with period features, and two separate WC's.

The building was constructed in 1901 and refurbished in 2008 which included the rebuild of the roof and the communal areas. Well maintained by the freeholders Camden Council there is an active residents association.

Accessible to the amenities of the West End. Nearby stations provide domestic and international transport links and include Goodge Street, Tottenham Court Road, Warren Street, Euston and Kings Cross.

### Features

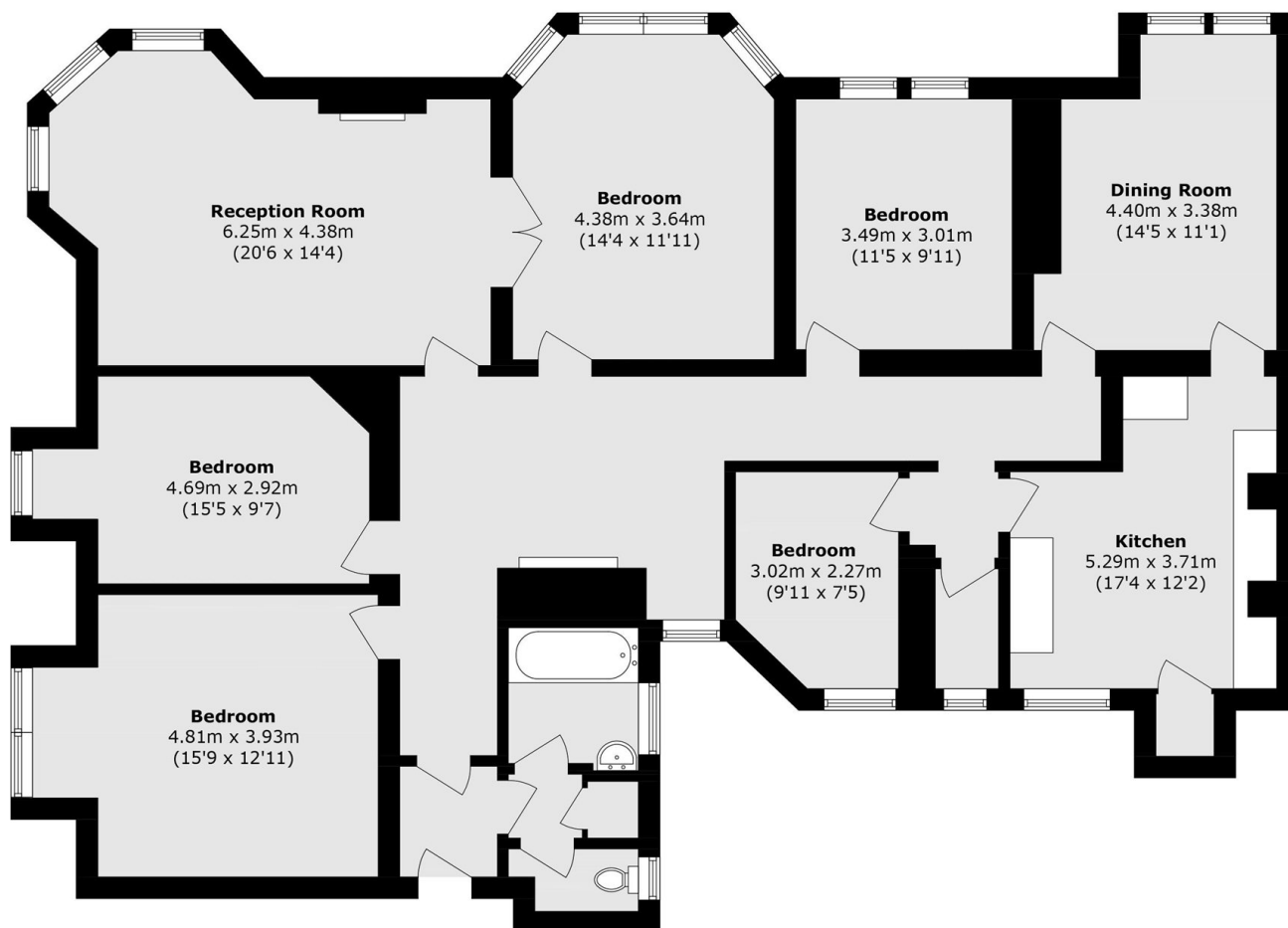
- Five Double Bedrooms
- One Reception Room
- Long Lease To 2197
- Original Features
- Modern Passenger Lift
- 1756 Sq Ft/163 Sq M







# Torrington Place, London, WC1E



## Fourth Floor

Total area (approx.): 163.2 sq. m (1756.6 sq. ft)