

Springfield Park, Maidstone, Kent, ME14 2FS

Offers Over £200,000

🛏 1 🚿 1 🚿 1



CHAIN FREE! EARLY VIEWING ADVISED! A stunning third-floor one-bedroom apartment ideally located close to Maidstone town centre, offering modern smart living throughout. The property features a bright open-plan living space with doors leading to good size balcony, perfect for the warmer evenings and entertaining. A fully integrated kitchen with smart appliances, and a high-spec bathroom with rainfall shower, touchscreen-controlled tap, and LED-lit mirror, this one is going to turn heads.

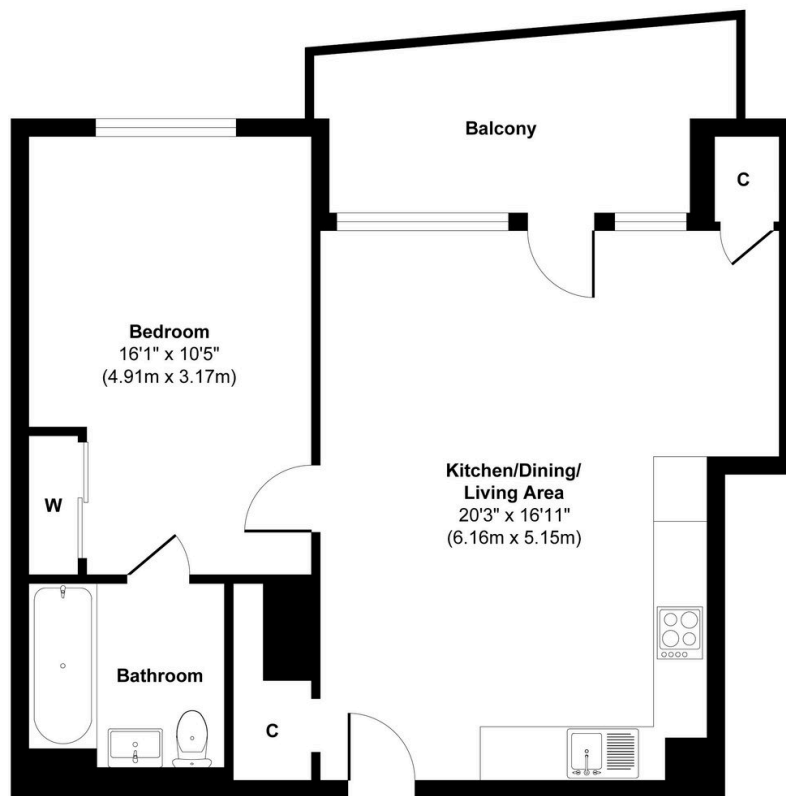
The spacious bedroom benefits from a built-in walk-in wardrobe area, alongside two additional storage cupboards. Further advantages include an allocated parking space, access to a communal roof terrace, and an on-site convenience shop.

The property also boasts an exceptionally long lease of approximately 995 years remaining and a low service charge of £97 per month.

Please quote reference JE1408 upon making an enquiry

Key Features

- CHAIN FREE
- Prime location close to Maidstone town centre
- Fully integrated smart appliances to kitchen and bathroom
- Allocated parking space
- Long lease with 995 years remaining
- Third-floor apartment
- Low service charge £97 per month
- On site convenience shop
- Two additional storage cupboards
- Communal roof garden



Floor Plan

Approx. Gross Internal Floor Area 546 sq. ft / 50.74 sq. m

Illustration for identification purposes only, measurements are approximate, not to scale.

Produced by Elements Property