



Airedale House 130 Sunbridge Road, Bradford, West Yorkshire BD1 2PF
£600 PCM

Locate are proud to offer this stylish, modern two bedroom, two bathroom apartment for rent, located off Sunbridge Road in the City Centre. The apartment comes fully furnished, with integrated appliances in the kitchen, a washer/dryer, and two bathrooms!

Available Now!!

Locate
The Property Experts

Locate Properties UK LTD

29-31 North Parade, Bradford, West Yorkshire, BD1 3JL

t. +44 (0) 01274 720 900

 @locatehomesbfd

e. info@locatehomes.co.uk



www.locatehomes.co.uk

Registered in England & Wales No. 5161728

Entrance

Living Area



The open plan living area incorporates a dining set, and two seated sofa. With plenty of natural light bouncing from the white walls, this space is made to feel bright and spacious.

Kitchen



The kitchen area has plenty of storage space, a built in electric cooker and hob, along with a freestanding Fridge Freezer.

Bedroom One



Fit for purpose, this bedroom comes with a double bed and mattress, and a three piece storage set including a wardrobe, drawers and a bedside unit.

En-Suite



Adjacent to the first bedroom, this en-suite has a standing shower cubicle, sink and toilet.

Bedroom Two



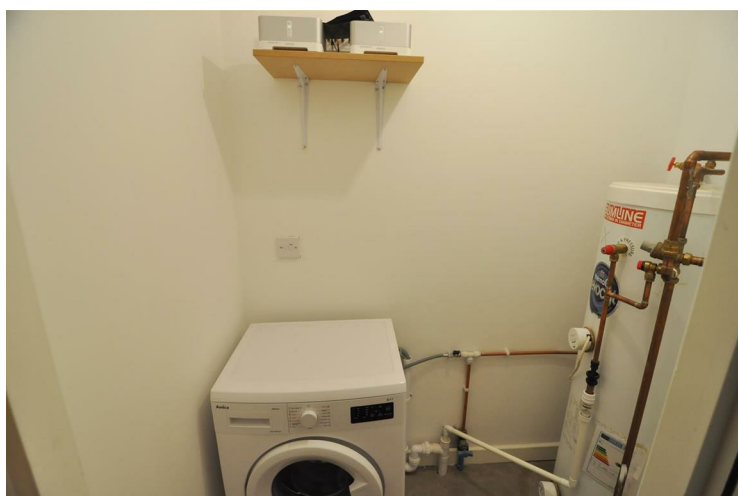
Again this bedroom has the same storage and bed as the first, with a large window letting in ample light.

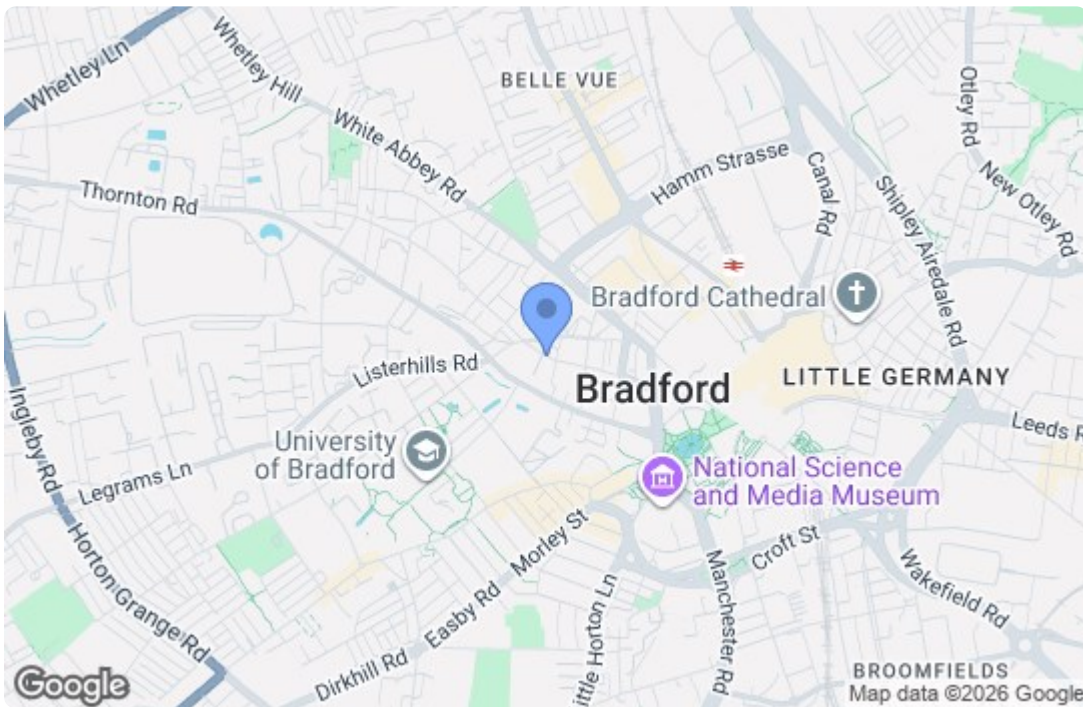
Bathroom



A three piece suite with shower and screen, this bathroom is ample in size.

Utility Room





Energy Efficiency Rating		
	Current	Potential
Very energy efficient - lower running costs		
(92 plus) A		
(81-91) B		83
(69-80) C		
(55-68) D	59	
(39-54) E		
(21-38) F		
(1-20) G		
Not energy efficient - higher running costs		
England & Wales		EU Directive 2002/91/EC
Environmental Impact (CO ₂) Rating		
	Current	Potential
Very environmentally friendly - lower CO ₂ emissions		
(92 plus) A		
(81-91) B		
(69-80) C		
(55-68) D		
(39-54) E		
(21-38) F		
(1-20) G		
Not environmentally friendly - higher CO ₂ emissions		
England & Wales		EU Directive 2002/91/EC