



Franklins Row, SW3

£500 Per week

A large one double bedroom apartment located in a prestigious portered development moments from Sloane Square. Benefits includes living room and bedroom and airy neutral décor.

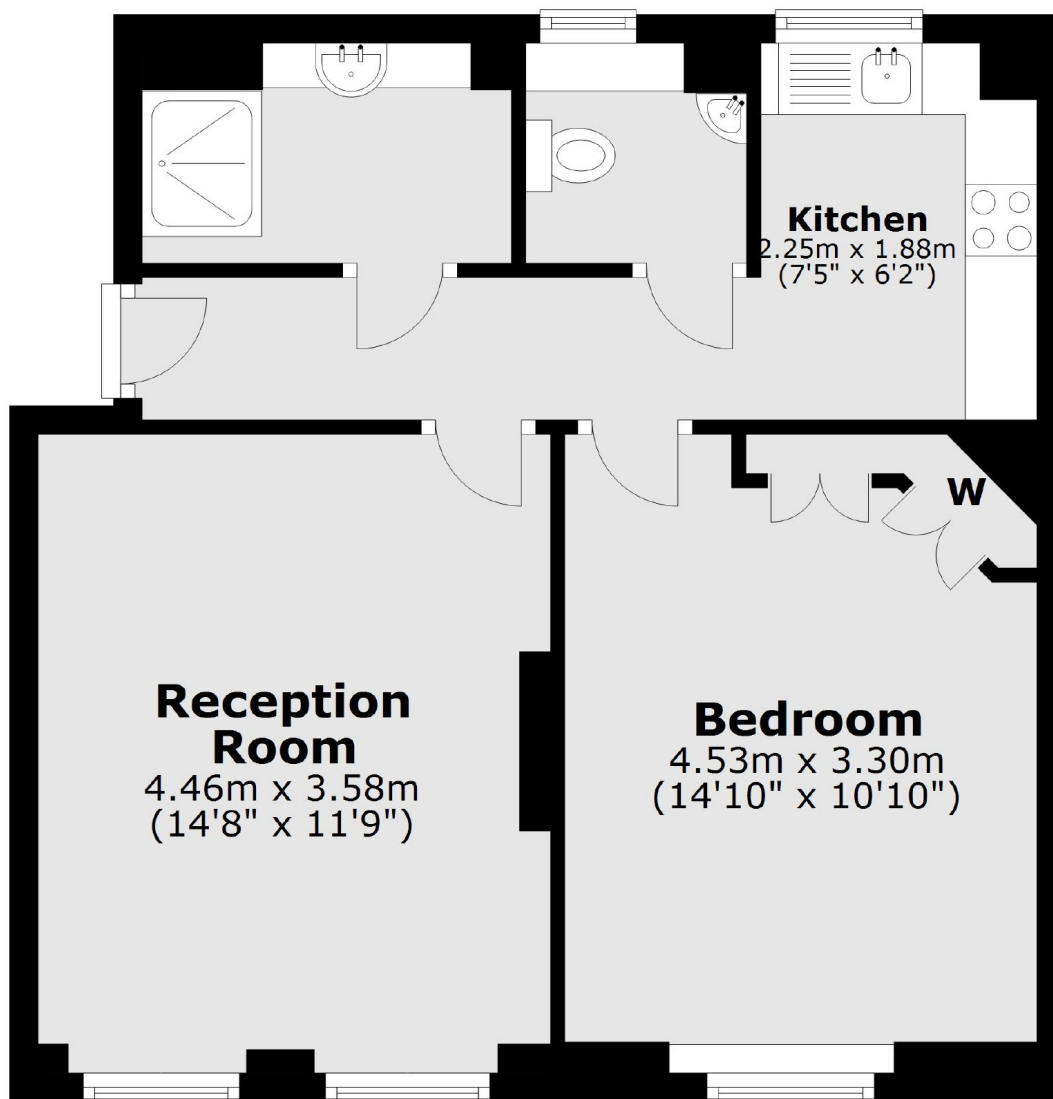
Burton Court is located just moments from the shops and restaurants of Kings Road and Sloane Square with Duke of York Square just a stone throw away.

Features

- One Double Bedroom
- One Bathroom
- Portered Development
- Separate Kitchen
- Fitted Storage
- Sloane Square

Franklins Row,
London, SW3

Lower Ground Floor



Total area: approx. 49.1 sq. metres (528.3 sq. feet)