



St. John's Wood Road

St John's Wood, NW8

Asking Price £690,000

A lovely 2-bedroom conversion located on the 2nd floor of this period house. The apartment has a fantastic 18ft x 17ft open-plan reception/kitchen and 2 bright bedrooms.

The property is positioned on St John's Wood Road, close to the junction with Hamilton Terrace and is approximately 400m from the shops and cafés of Clifton Road in Little Venice.



St. John's Wood Road

St John's Wood, NW8

- 2 Bedroom 2nd Floor Conversion
- 650 sq. ft.
- 87 Year Leasehold
- 400m From Little Venice



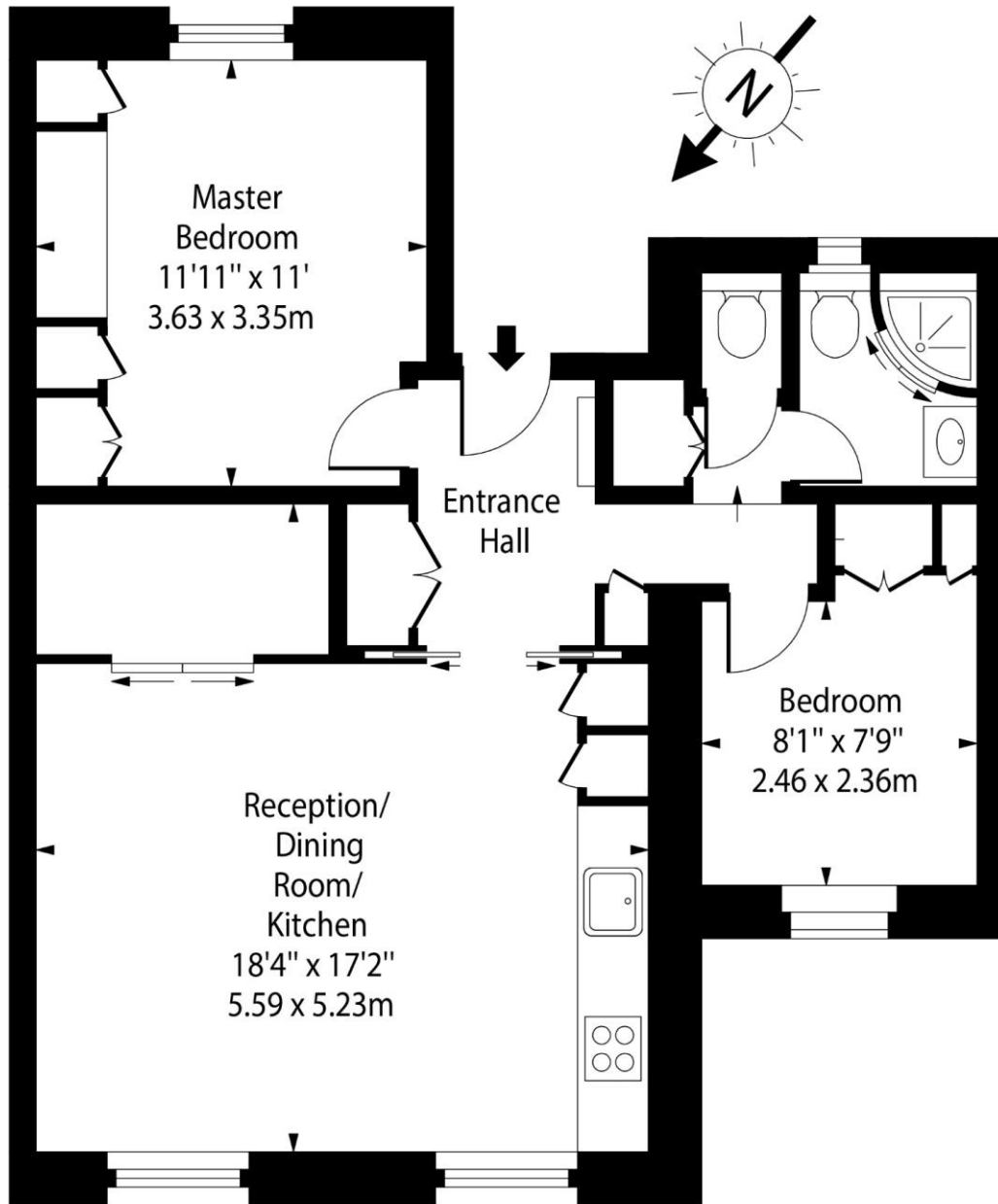
Tenure: Leasehold
Service Charge: £2,500pa
Ground Rent: £0
Local Authority: Westminster
Council Tax Band: E

Energy Efficiency Rating		Current	Potential
Very energy efficient - lower running costs			
(92-100)	A		
(81-91)	B		
(69-80)	C		
(55-68)	D	59	65
(39-54)	E		
(21-38)	F		
(1-20)	G		
Not energy efficient - higher running costs			
England, Scotland & Wales		EU Directive 2002/91/EC	

Chestertons St John's Wood Sales

122 St John's Wood High Street
London
NW8 7SG
sales.stjohnswood@chestertons.co.uk
020 3040 8611
chestertons.co.uk

St. Johns Wood Road, NW8



Second Floor

Approx Gross Internal Area 650 Sq Ft - 60.39 Sq M

For Illustration Purposes Only - Not To Scale

