

Poplars Close

Ruislip • Middlesex • HA4 7BU
Offers In Excess Of: £950,000



coopers
est 1986

Poplars Close

Ruislip • Middlesex • HA4 7BU

Nestled within the highly sought-after Poplars area of Ruislip, this beautifully presented four-bedroom home offers spacious and versatile accommodation arranged over three floors, perfectly suited to modern family living. Situated in a quiet and private location, the property combines a peaceful setting with excellent convenience, being just moments from the High Street, local amenities, highly regarded schools, and excellent transport links. The ground floor features a welcoming entrance hall leading to a bright and spacious living room, ideal for both relaxing and entertaining, alongside a well-appointed kitchen with ample dining space. A useful utility area and guest cloakroom add further practicality to the home. The first floor comprises three well-proportioned bedrooms, including an impressive principal bedroom, together with a contemporary shower room. The top floor offers an additional generous bedroom and separate study, creating an ideal space for guests, home working, or growing families, complemented by a modern family bathroom. Externally, the property benefits from off-street parking and a garage, while the private setting enhances the sense of exclusivity and tranquillity rarely found so close to the

SEMI DETACHED

FOUR BEDROOMS

CUL-DE-SAC

TOUCHING DISTANCE TO RUISLIP HIGH STREET

TWO BATHROOMS

LARGE GARDEN

RECENTLY REFURBISHED

DOWNSTAIRS WC

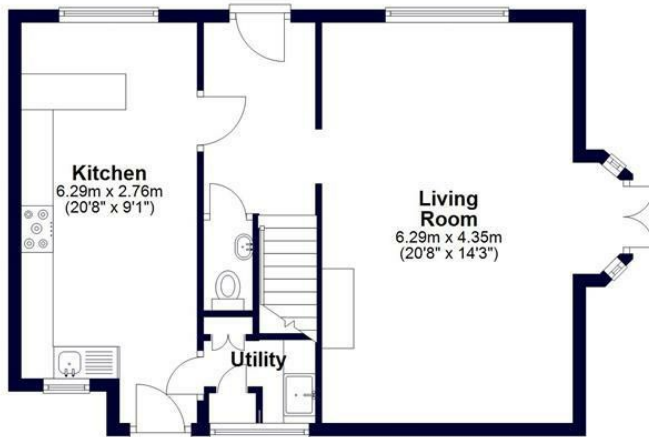
UTILITY ROOM

QUIET LOCATION

These particulars are intended as a guide and must not be relied upon as statements of fact. Your attention is drawn to the Important Notice on the last page.





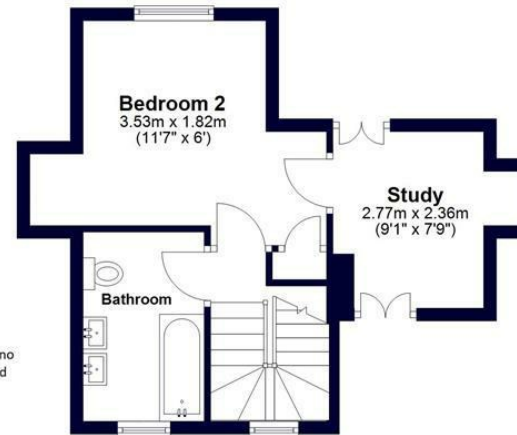


Whilst every effort has been made to ensure the accuracy of this floor plan, measurements of doors, windows, rooms and other items are approximate and no responsibility is taken for any errors. This plan is for illustrative purposes only and should be used as such by any prospective purchaser.
©Property Pot. Produced on behalf of Coopers Residential.

First Floor
Approx. 54.8 sq. metres (589.9 sq. feet)



Second Floor
Approx. 30.6 sq. metres (329.5 sq. feet)

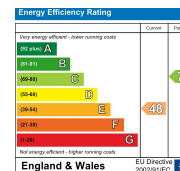


Total area: approx. 140.0 sq. metres (1507.1 sq. feet)



**126-128 High Street, Ruislip,
Middlesex, HA4 8LL**
ruislipsales@coopersresidential.co.uk

CoopersResidential.co.uk



Important Notice: These particulars, whilst believed to be accurate are set out as a general outline only for guidance and do not constitute any part of an offer or contract. Intending purchasers should not rely on them as statements or representation of fact, but must satisfy themselves by inspection or otherwise has the authority to make or give any representation or warranty in respect of the property.