



Castle Lea, Caldicot

2 Bedrooms
1 Bathrooms
1 Receptions

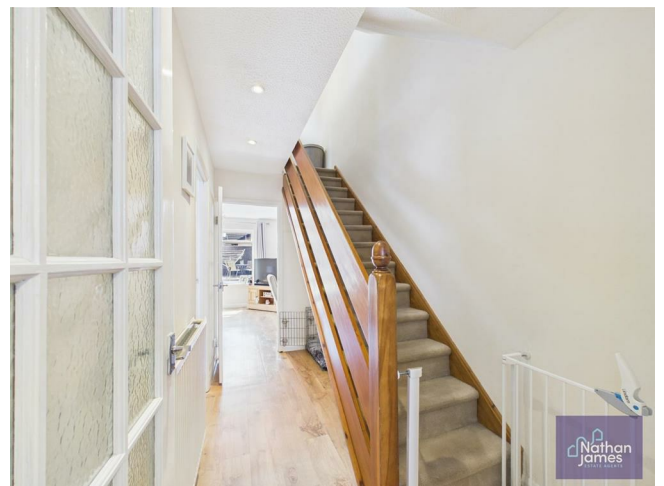
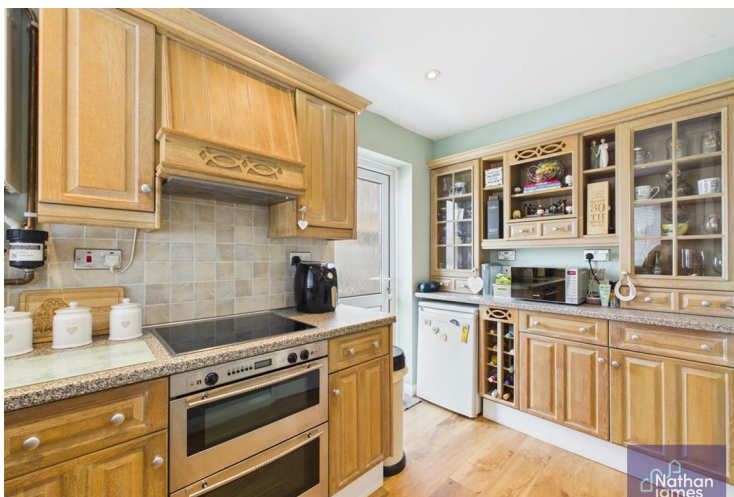
£245,000



Welcome to Castle Lea, Caldicot, this delightful semi-detached house presents an excellent opportunity for first-time buyers or those looking to downsize. Spanning a comfortable 735 square feet, the property boasts two well-proportioned bedrooms and a welcoming reception room, perfect for both relaxation and entertaining.

The home features a private driveway with parking space for two vehicles, along with a garage, ensuring convenience for residents and guests alike. The enclosed south-facing garden is a true highlight, providing a serene outdoor space to enjoy the sunshine and fresh air, ideal for gardening enthusiasts or those who simply wish to unwind in a tranquil setting.

Situated in a prime location, this property offers easy access for commuters travelling to both Bristol and Cardiff, making it an attractive choice for professionals seeking a balance between suburban living and city convenience. With its appealing features and desirable location, this lovely two-bedroom home is not to be missed.



Entrance
5'7 x 4'10

Inner Hallway
5'7 x 11'5

Lounge
12'3 x 12'2

Kitchen / Diner
6'4 x 11'11

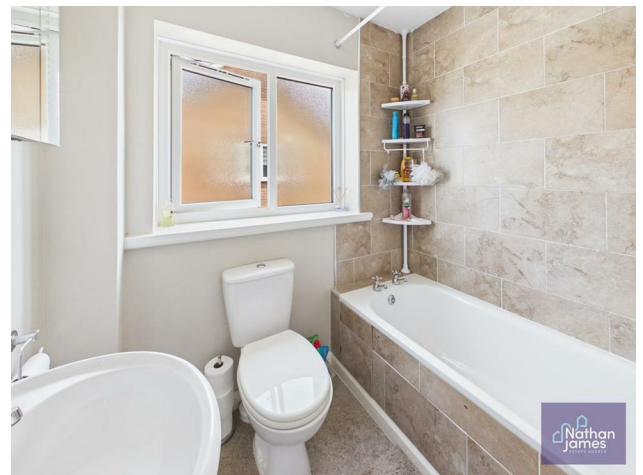
Landing
6'1 x 6'4

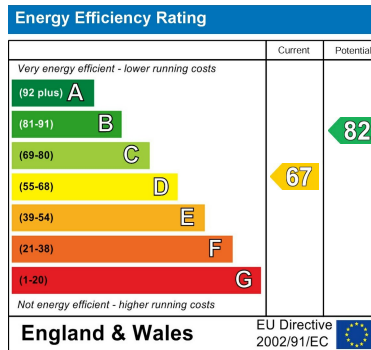
Bedroom 1
12'3 x 9'1

Bathroom
5'10 x 6'7

Bedroom 2
9'9 x 8'9

Garage
8'5 x 16'3





8 Newport Road
Caldicot
Monmouthshire
NP26 4HX
01291 421600

nj@nathanjamesestateagents.co.uk
nathanjamesestateagents.com