



20, Wyndham Terrace, Salisbury



An attractive three storey period terraced house in a quiet lane alongside Wyndham Park, with private parking, garden and lovely views.

20 Wyndham Terrace,
Salisbury, SP1 3AF

PCM
£1,800 PCM



To the front of 20 Wyndham Terrace is a beautifully planted small cottage garden with a path leading from the driveway to the front door. Off the entrance hallway is a sitting room with wood burner and bay window.

In the heart of the property is a dining room opening into the kitchen with a good range of floor and wall mounted units, sink, oven, hob, extractor and integrated dishwasher. A rear

Features

- Period town house
- Four Bedrooms
- Modern bathroom & en suite shower room
- Available End January
- Parking space
- Front garden & rear courtyard garden

Tenancy & Restrictions

To be let unfurnished on an Assured Shorthold Tenancy (minimum term of 12 months, thereafter on a monthly basis). No smokers or sharers.

EPC Rating

D (65)

Outgoings

Council Tax: Wiltshire £2644.36
(2025/26) Band D

Size

1193.00 sq ft

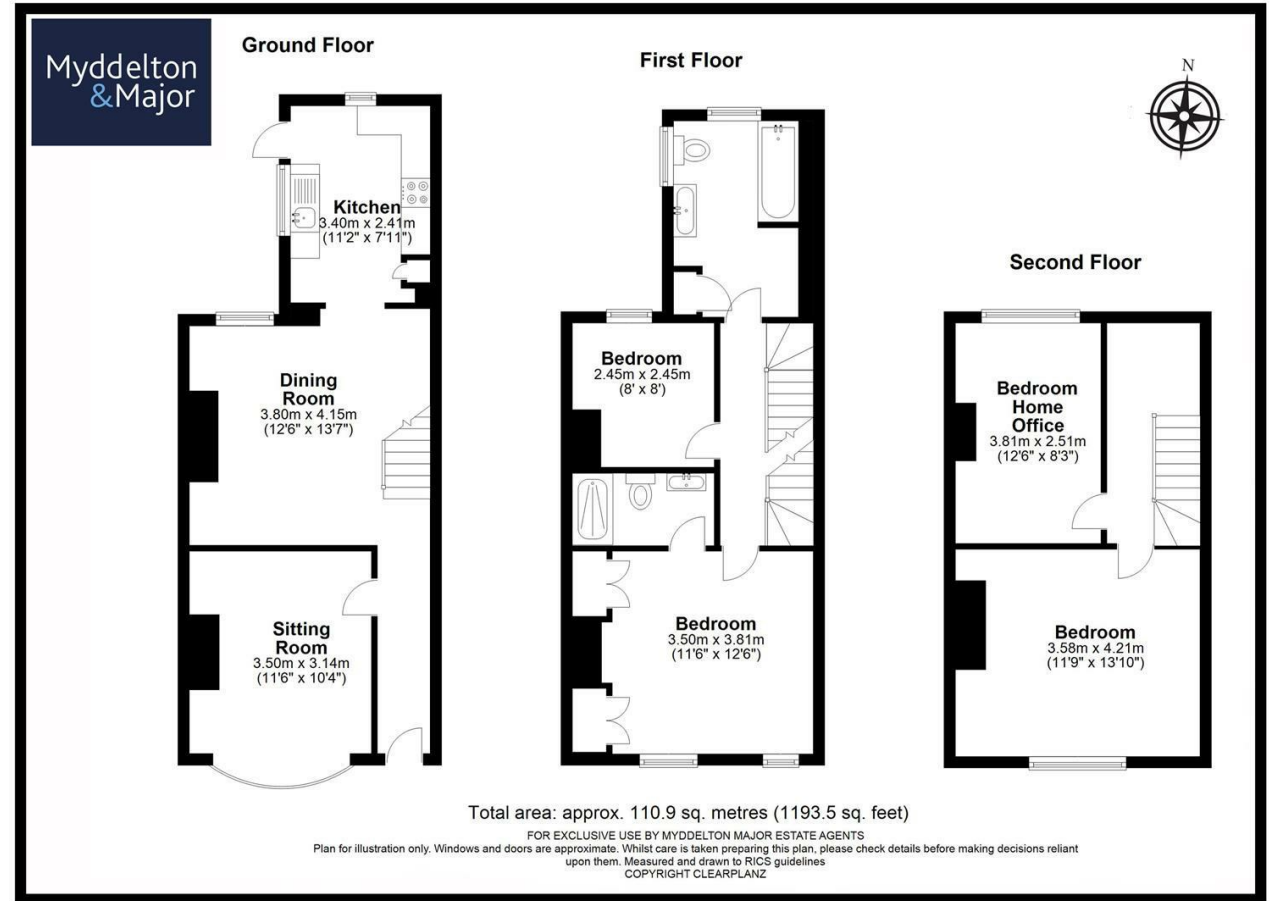
door leads to a pretty courtyard garden with gate to rear passage.

To the first floor is a spacious recently refurbished bathroom, single bedroom with carpet, and to the front of the property is a large double bedroom with built in wardrobes and an en suite shower room, also recently refurbished. To the second floor there is a spacious double bedroom to the front of the property and another smaller double bedroom/home office to the rear, both within the eaves so with some restricted head room.

The house is stylishly decorated with heritage colours and with a great mix of original features and modern facilities, creating a lovely home in a great location.

The house is located within a popular residential part of Salisbury which is a level walk from the city's excellent range of facilities – shopping, leisure, educational and cultural, as well as a mainline station with trains to London Waterloo (journey time approximately 90 minutes).





Disclaimer Notice Myddelton & Major and their clients give notice that:- i) they have no authority to make or give any representations or warranties in relation to the property, ii) these particulars do not form part of any offer or contract and must not be relied upon as statements or representations of fact. iii) any areas, measurements or distances are approximate. The text, photographs and plans are for guidance only and are not necessarily comprehensive. It should not be assumed that the property has all the necessary planning, Building Regulation or other consents, and, any services, equipment or facilities have not been tested by the agent. iv) the purchaser must satisfy themselves by inspection or otherwise.