



## Romberg Road, SW17

£1,250,000

4 3 2 D

- Four Bedrooms
- Three Floors
- Double Reception Room
- Private Garden
- Great Transport Links
- 1,532 Sq. Ft.









## ABOUT THE PROPERTY

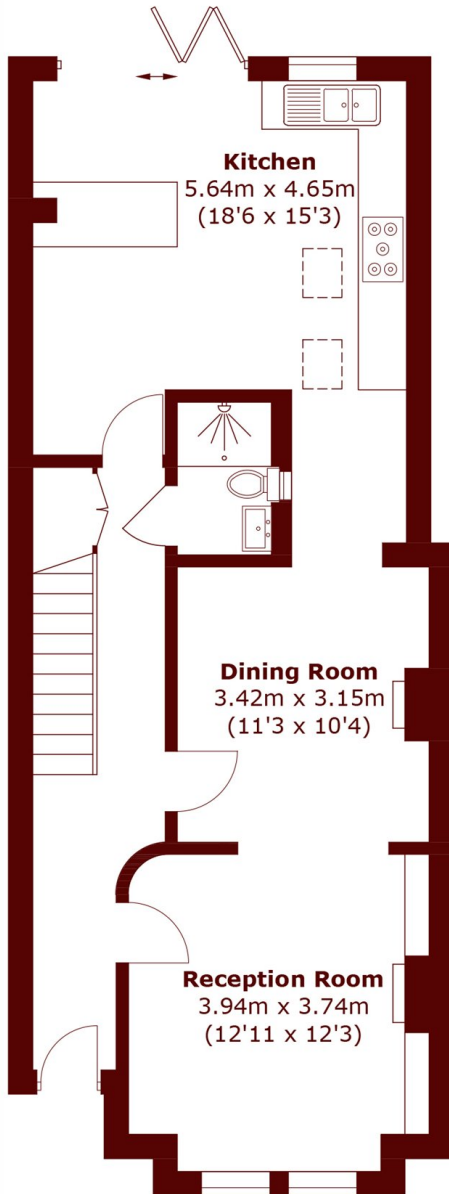
A four bedroom property, split over three floors and set in a beautiful red brick building in Tooting Bec. Freehold

Coming to the market offering a blend of period charm with modern features, this property is the perfect purchase for a family or those looking to upsize. The ground floor offers a double reception room separated by a cased opening, with feature fireplaces and delicate ceiling cornicing. The fully fitted kitchen has a modern feel with a breakfast bar, skylight windows and bifold doors which provide direct access to the neat, partially paved private garden. Completing this floor is a downstairs WC. Three bedrooms are located on the first floor, along with a bathroom and separate WC. The remaining bedroom occupies the majority of the second floor, with a bathroom also located on this floor.

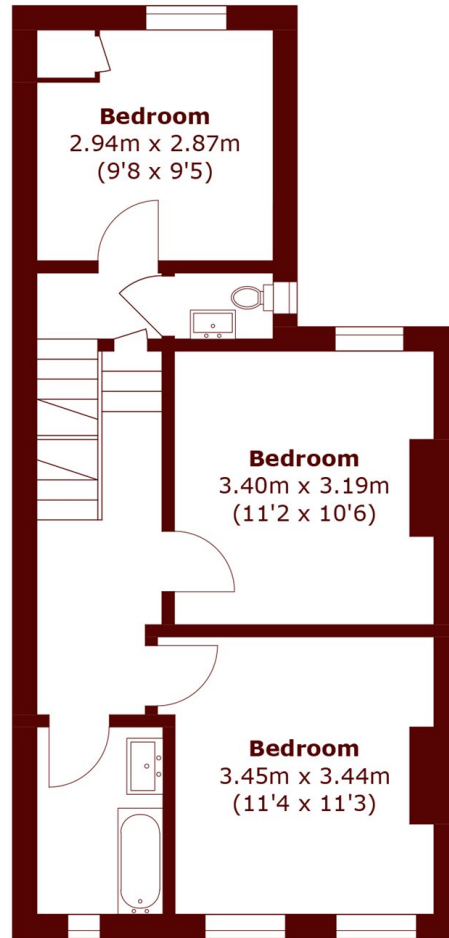


Romberg Road is a charming residential road, which lies within a few minutes' walk of all local amenities of Upper Tooting Road. The wide-open spaces of Tooting Bec Common are within easy reach. Tooting Bec station (Northern line, Zone 3) as well as all local bus routes offer frequent access into and out of The City.

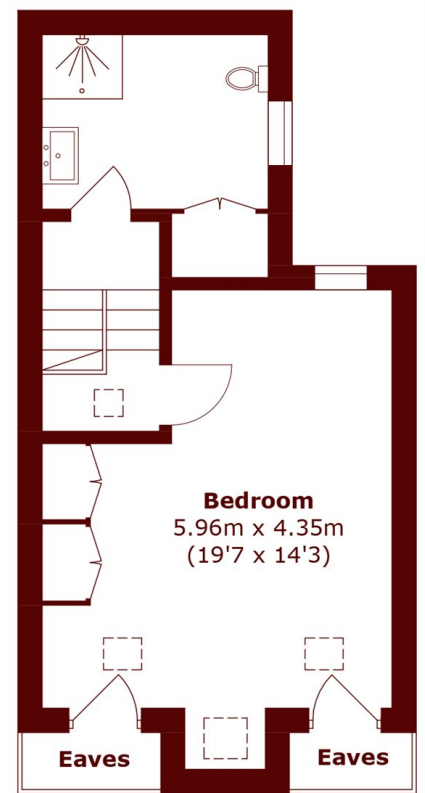




**Ground Floor**



**First Floor**



**Second Floor**

Total area (approx.): 142.3 sq. m (1,531.7 sq. ft)  
(Excluding Eaves)

**Marsh & Parsons Tooting**  
29-31 Upper Tooting Road,  
London, SW17 7TS  
020 8767 3655

We aim to make our particulars both accurate and reliable. However, they are not guaranteed; nor do they form part of an offer or contract. If you require clarification on any points then please contact us, especially if you're traveling some distance to view. Please note that appliances and heating systems have not been tested and therefore no warranties can be given as to their good working order.

[marshandparsons.co.uk](http://marshandparsons.co.uk)