



EXCHANGE GARDENS, SW8

£4,500 pcm

A sleek two bedroom apartment in the iconic Keybridge Tower. Bright open plan living, two bathrooms with en-suite to principal bedroom. Exceptional resident's facilities including 24hr concierge, pool, gym, sauna, steam room and club lounge.

- Two Bedroom Apartment
- Two Modern Bathrooms
- Open Plan Reception
- Integrated Kitchen
- 24hr Concierge
- Swimming Pool and Gym



ABOUT THE HOME

The apartment features a dual-aspect, open-plan reception room with custom blackout blinds throughout the living areas and bedrooms. The fully integrated kitchen comes equipped with modern appliances, and the property benefits from underfloor heating and comfort cooling throughout.

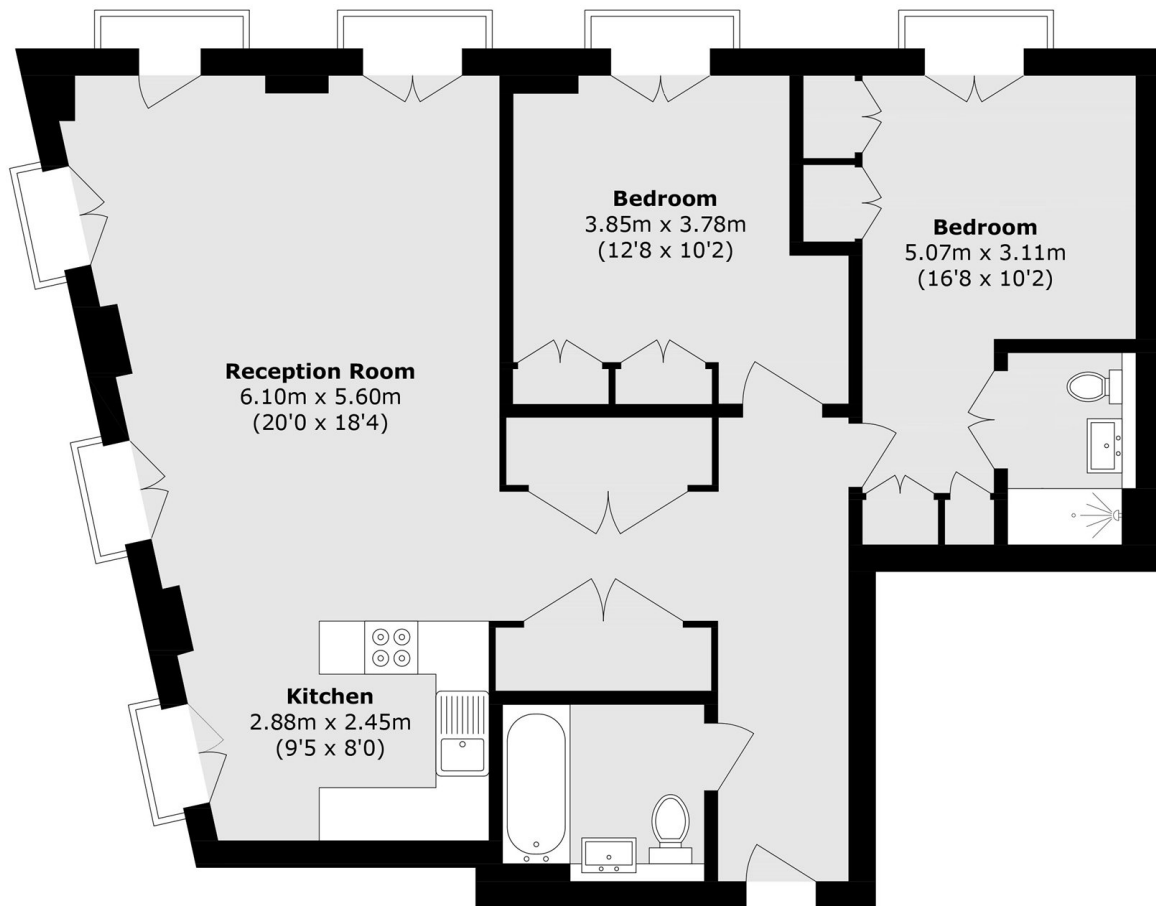
Both bedrooms are generously proportioned, each fitted with bespoke wardrobes enhanced with additional storage and hanging space. The principal suite benefits from a private en-suite bathroom, with the same custom wardrobes extending into the hallway.

Situated on the 25th floor, the apartment enjoys unobstructed views in every direction, sitting above the surrounding buildings within the development.

Moments from Vauxhall Station with Underground & National Rail links. Enjoy nearby Battersea Park, Vauxhall City Farm & local eateries. Oxford Circus & Leicester Square under 15 mins. Supermarkets, cafés & riverside walks on your doorstep.







Total area (approx.): 89.0 sq. m (957.9 sq. ft)

LiFE RESIDENTIAL

11 Flagstaff House, London,
SW8 2LZ

Sales: 020 7476 1408

Lettings: 020 7582 7989

Energy Rating: B. We aim to make our particulars both accurate and reliable. However they are not guaranteed; nor do they form part of an offer or contract. If you require clarification on any points then please contact us, especially if you're traveling some distance to view. Please note that appliances and heating systems have not been tested and therefore no warranties can be given as to their good working order.