

Taunton, Somerset, TA3



Price as listed



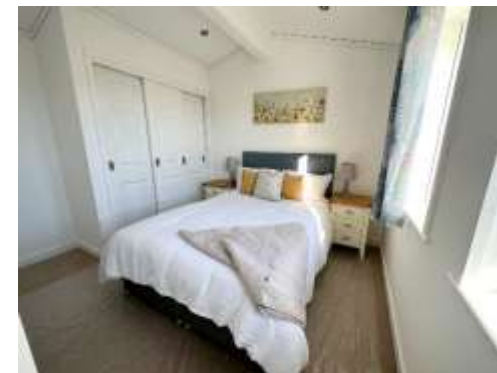
This park home (44'x12') is perfect for those looking for a detached, easy to maintain, bungalow style property. The Pathfinder Bespoke is an airy and light home. It has a wonderful lounge/fitted kitchen with integrated appliances. The home features two bedrooms with plenty of storage. Beside the bedroom is the family bathroom which is complete with shower facilities. This home also comes with its own garden shed for extra storage.

Surrounding this park there are many places of interest to explore in the Somerset countryside, including the nearby village of Montacute with its outstanding Tudor House and beautiful grounds. Milk and newspapers are delivered daily, and a local superstore is only a few minutes drive away.

Age restriction: Over 50s  
 Pets allowed: No  
 Site fees: £276 per month  
 Residential license

### Key Features

- Brand new home
- Countryside Walks
- Established Park
- Fully Fitted Kitchen
- Fully Furnished
- Over 50s
- Part Exchange Available
- Residential Park
- Shops and amenities nearby
- Modern home



**House to sell?**  
 Hassle-free Property Part-Exchange is available from Quickmove Properties, with no estate agent fees, no solicitor's fees and no market uncertainty.

**CONTACT US**  
 01793 840917  
 advice@quickmoveproperties.co.uk

