



Station Road, NW4

£1,850 Per calendar month

An excellent two bedroom flat with off street parking located within this attractive modern block. This spacious top floor property comes with two bathrooms, large modern kitchen / reception room and good storage.

This popular modern block is conveniently located between Hendon Thameslink station (overground) and Hendon Central station (underground).

Features

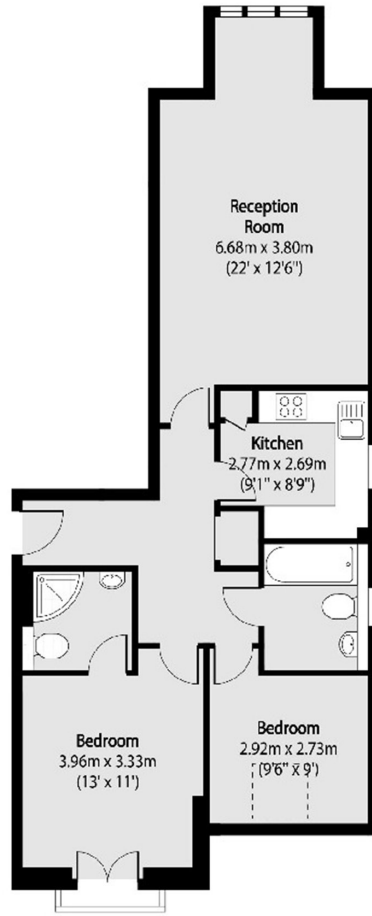
- Two Double Bedrooms
- Two Bathrooms
- Private Parking
- Modern Building
- Top Floor
- New Kitchen



Station Road, NW4



Station Road, London, NW4



Total area (approx): 70.35 sq m (757 sq. ft)