



CHRISTOPHER WOOD POWERED BY exp TM UK

@ christopher.wood@exp.uk.com

christopherwood.exp.uk.com

01494 623 101

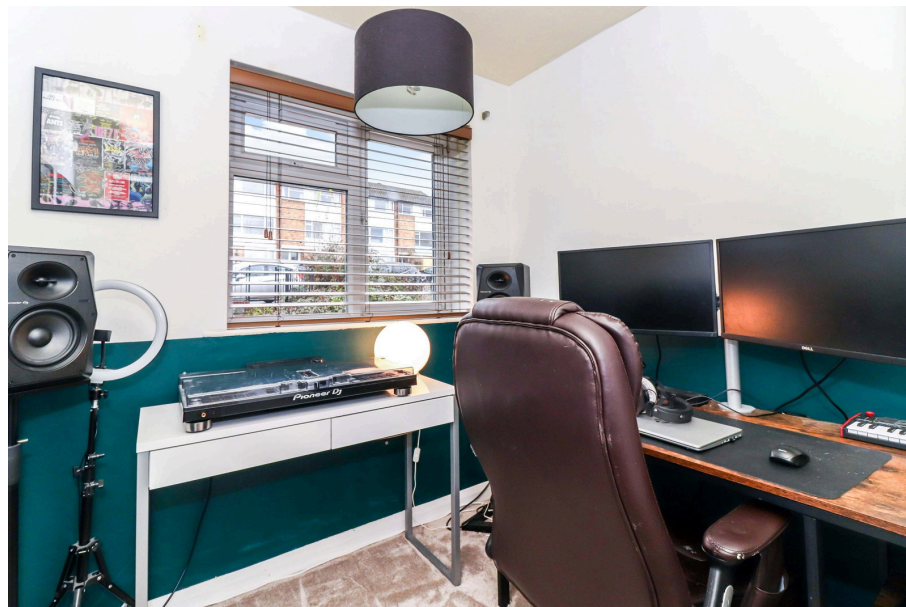
Fair Leas, Chesham, HP5 2QW

Guide Price £430,000

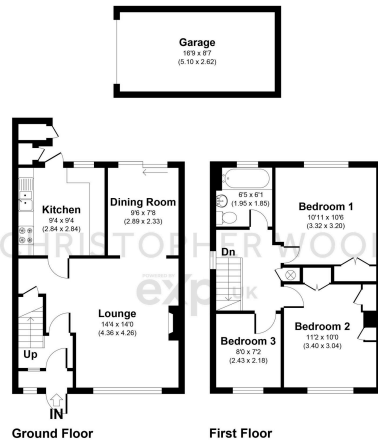
🛏️ 3 🚿 1 🚗 2



- 3 Bedroom End of terrace house
- Updated bathroom
- Modern kitchen
- Open plan Living/dining area
- Wrap around garden
- Potential to extend STPP
- Single Garage in a block
- Please quote CW0111 when enquiring



A homely and well presented 3 bedroom end of terrace house, located in a quiet cul de sac location, with potential to extend STPP, garden and single garage....



Fair Leas, HP5 2QW

APPROXIMATE GROSS INTERNAL AREA 976 SQ FT / 90.72 SQ M INC. GARAGE
 OTHER ROOMS: THIS IMAGE IS ILLUSTRATIVE ONLY - NOT TO SCALE. COPYRIGHT THE IMAGE TALKER LTD. 2025

25/11/2025, 10:32

Energy performance certificate (EPC) - Find an energy certificate - GOV.UK

Energy performance certificate (EPC)			
17, Fair Leas CHESHAM HP5 2QW	Energy rating C	Valid until 12 November 2029	Certificate number 9925-1965-7265-6771-6844
Property type end-terrace house		Total floor area 72 square metres	

Rules on letting this property

Properties can be let if they have an energy rating from A to E.

You can read [guidance for landlords on the regulations and exemptions](https://www.gov.uk/guidance/domestic-private-rented-property-minimum-energy-efficiency-standards-publication) (https://www.gov.uk/guidance/domestic-private-rented-property-minimum-energy-efficiency-standards-publication).

Energy rating and score

This property's energy rating is C. It has the potential to be B.

[See how to improve this property's energy efficiency.](#)

The graph shows this property's current and potential energy rating.

Properties get a rating from A (best) to G (worst) and a score. The better the rating and score, the lower your energy bills are likely to be.

For properties in England and Wales:

the average energy rating is D
 the average energy score is 60



https://find-energy-certificate.service.gov.uk/energy-certificate/9925-1965-7265-6771-6844?print=true

14