



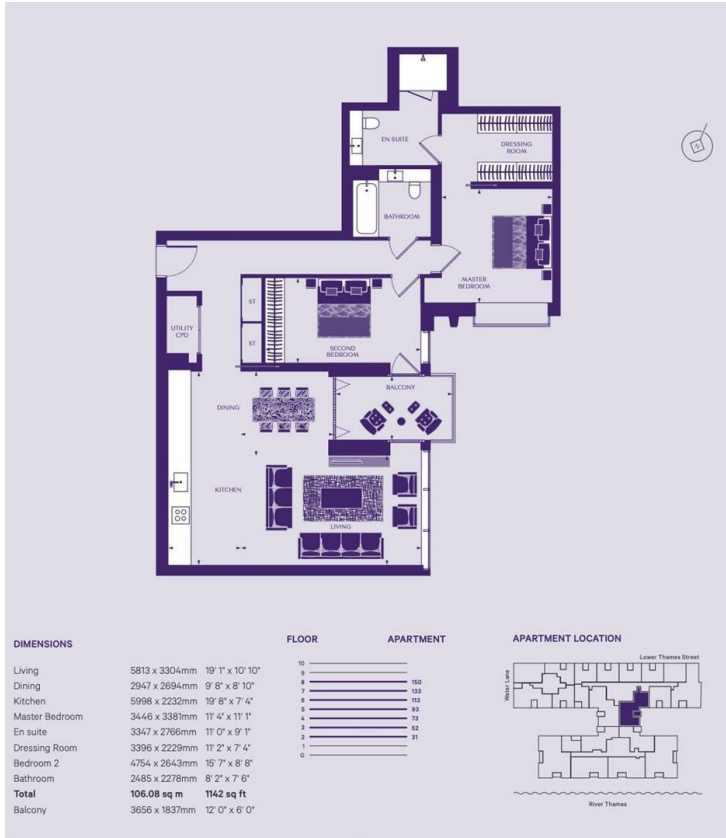
## 1 Water Lane

, London EC3R 6AP

- London Bridge/Monument/Tower Hill station
  - 24-hour Concierge
  - 20m Swimming Pool
    - Cinema room
    - CTB-G
- City Centre
  - Fully Equipped Gym
    - Spa
    - EPC-B

**£5,200 PCM**

Local Authority **City Of London**  
 Council Tax Band **G**  
 EPC Rating **B**



**London Office Office**  
 Spaces Victoria, 25 Wilton Road, Pimlico,  
 London, SW1V 1LW

**Contact**  
 020 3084 3094  
 XL@londonvictoriagroups.co.uk  
 www.londonvictoriagroups.co.uk

Agents Note: Whilst every care has been taken to prepare these particulars, they are for guidance purposes only. All measurements are approximate and for general guidance purposes only and whilst every care has been taken to ensure accuracy, they should not be relied upon and potential buyers/tenants are advised to recheck the measurements.