



Upper Grosvenor Street
Mayfair, W1K

CHESTERTONS





A truly magnificent apartment with grand proportions extending to approximately 4,291sqft. of internal space with 4 meter high ceilings on the ground floor, finished to the highest of standards throughout. This large apartment in central Mayfair has a very modern feel with bespoke furniture, beautiful artwork and a stunning glass stair case whilst also retaining some of the period features. It further benefits from two private patios and lift access to the lower floor.

- Four bedrooms
- Four bathrooms (& a guest WC)
- Two patios
- Approx. 4,291sqft.

£12,500 per week (£54,166.67 pcm)

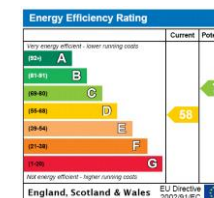
Additional tenant charges apply (fees apply to non-AST tenancies only)

Tenancy Agreement Fee: £300

References per Tenant/Guarantor: £60

Inventory check (approx. £100 – £250 inc. VAT)

[chestertons.com/property-to-rent/applicable-fees](https://www.chestertons.com/property-to-rent/applicable-fees)



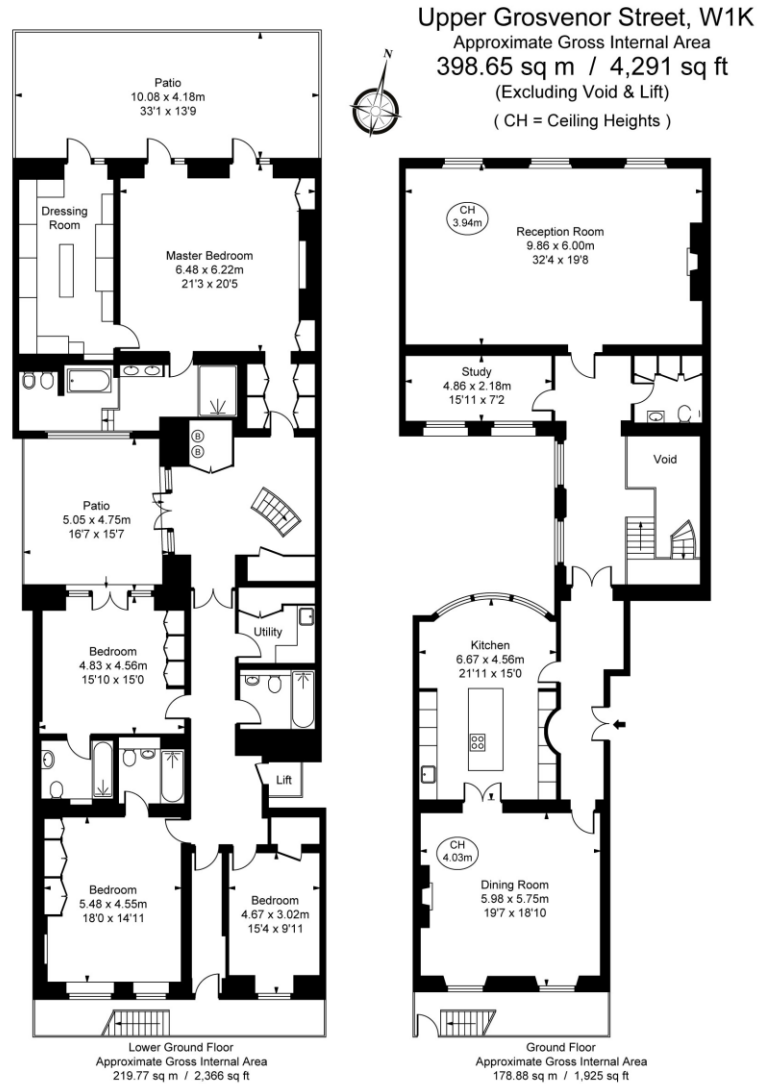
Minimum Term: 12 months
Deposit Required: 2 months' equivalent rent
Local Authority: Westminster
Council Tax Band: TBC
EPC Rating: D
Furnished

Chestertons Mayfair Lettings

47 South Audley Street
 Mayfair
 London
 W1K 2QA

lettings.mayfair@chestertons.com

020 7288 8301



This plan is not to scale. It is for guidance and not for valuation purposes.
 All measurements and areas are approximate only, and have been prepared in accordance with the current edition of the RICS Code of Measuring Practice.
 © Fulham Performance

Chesterton Global Ltd trading as Chestertons for themselves and for the vendor of this property whose agents they are, give notice that (i) these particulars do not constitute any part of an offer or contract, (ii) all statements contained within these particulars are made without responsibility on the part of Chestertons or the vendor, (iii) whilst made in good faith, none of the statements contained within these particulars are to be relied upon as a statement or representation of fact, (iv) any intending purchasers must satisfy themselves by inspection or otherwise as to the correctness of each of the statements contained within these particulars, (v) the vendor does not make or give either Chestertons or any person in their employment any authority to make or give representation or warranty whatsoever in relation to this property. Wide angle lenses may be used. ©Copyright Chestertons | Chesterton Global Ltd | Registered Office 40 Connaught Street, Hyde Park, London W2 2AB Registered Company Number 05334580.