



Stanley Gardens

NOTTING HILL W11



Stanley Gardens

NOTTING HILL W11

A charming apartment providing elegant and well proportioned accommodation, with excellent natural light and beautiful communal garden views. Highlights include wonderful ceiling heights, floor to ceiling french door windows, voluminous rooms, working fireplace, charming terraces to front and rear, a newly fitted kitchen and access to serene communal gardens.

Stanley Gardens is a sought after location in the heart of Notting Hill with easy access to Westbourne Grove and Portobello Road, offering the finest shops, restaurants and bars. Notting Hill Gate can be reached by foot providing access to the Underground Station on the Central, District and Circle lines.

LONG LET: £750 PER WEEK (FEES APPLY)
UNFURNISHED
LOCAL AUTHORITY: ROYAL BOROUGH OF
KENSINGTON AND CHELSEA
ENERGY RATING: D

OFFERS SUBJECT TO CONTRACT AND REFERENCES.

BEDROOM, BATHROOM, RECEPTION ROOM, KITCHEN, 2
TERRACES, COMMUNAL GARDEN ACCESS.

NOTTING HILL LETTINGS

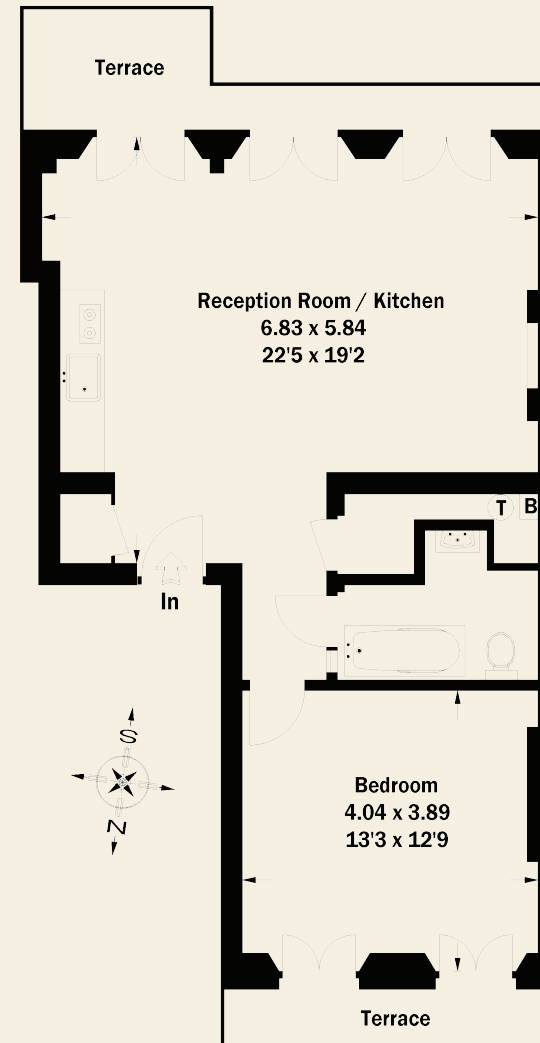
T 020 7221 5388

205 WESTBOURNE GROVE, LONDON W11 2SB

E KF@BECTIVE.CO.UK

WWW.BECTIVE.CO.UK

Approximate Gross Internal Area = 60.5 sq m / 651 sq ft



First Floor

BECTIVE
- LESLIE MARSH -