



Meriden Drive, Birmingham B37 6BH

welcome to

Meriden Drive, Birmingham

****MID TERRACE PROPERTY**THREE GOOD SIZE BEDROOMS**THROUGH LOUNGE DINER**FITTED KITCHEN**UTILITY ROOM**UPSTAIRS BATHROOM**GOOD SIZE REAR GARDEN**NO CHAIN****



Agents Note

Please note that this has been measured by a Third-Party Company.

Front Garden

Block paved path to front door and decorative pebble borders.

Entrance Hall

Stairs up to first floor, door to kitchen and lounge.

Lounge

Feature fireplace, two ceiling light points, radiator, double-glazed windows to front and rear and laminate flooring.

Kitchen

Spotlights, double-glazed window and door to garden, wall, drawer and base cupboards, laminate flooring, door to lounge, integrated oven, gas hob with extractor fan over, sink and drainer with mixer tap.

Utility Room

Double-glazed window to front, cupboard and base units, plumbing for washing machine and wall mounted boiler.

Bedroom One

Ceiling light point, radiator, laminate flooring and double-glazed window to front.

Bedroom Two

Ceiling light point, radiator, laminate flooring and double-glazed window to front.

Bedroom Three

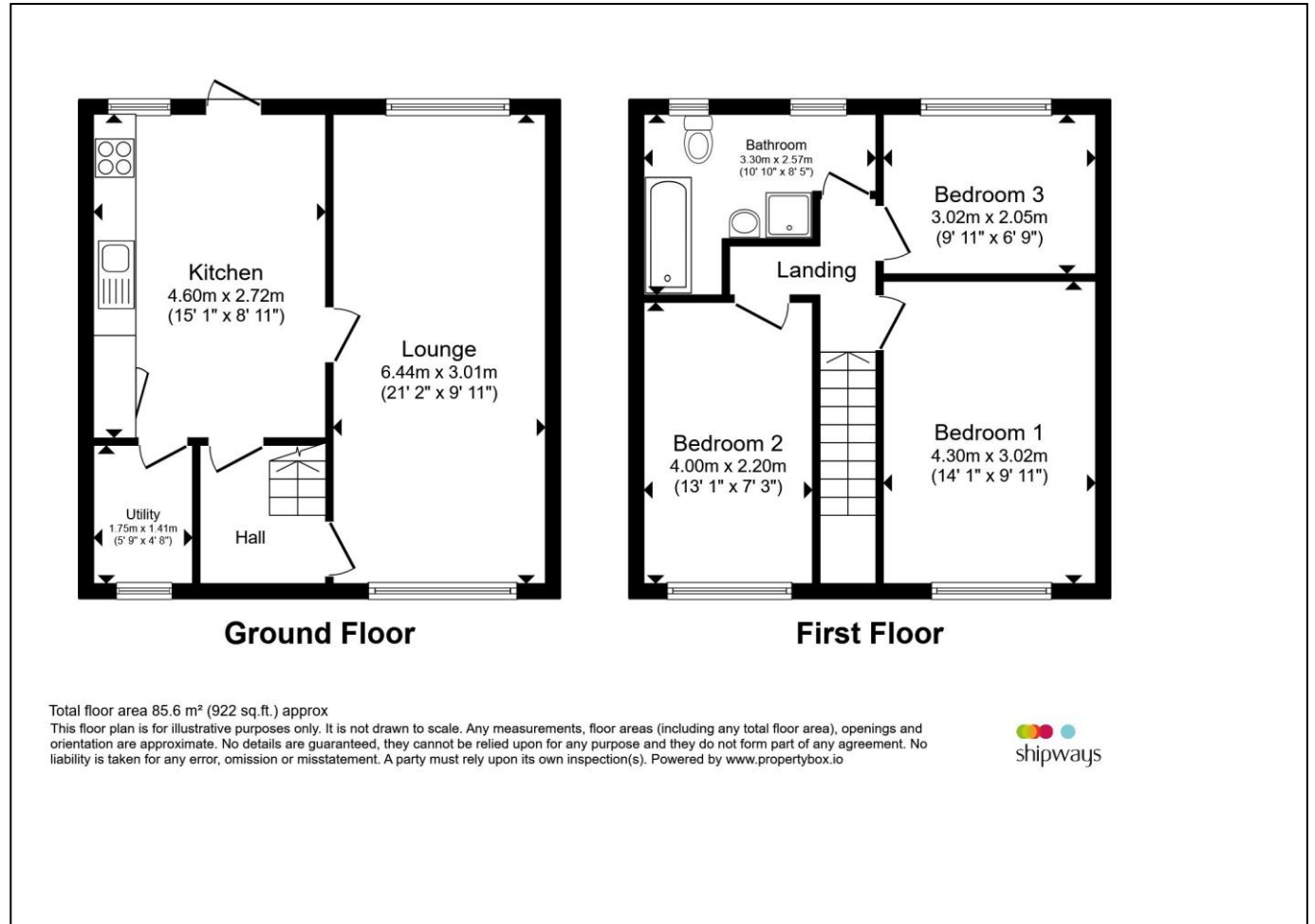
Ceiling light point, radiator, laminate flooring and double-glazed window to front.

Bathroom

Low level w.c., shower cubicle, double-glazed obscured window to rear and tiled walls.

Rear Garden

Patio area, laid to lawn, enclosed to neighbouring boundaries.



view this property online shipways.co.uk/Property/CAB112237



welcome to

Meriden Drive, Birmingham

- NO CHAIN
- THREE GOOD SIZE BEDROOMS
- THROUGH LOUNGE DINER
- FITTED KITCHEN WITH SEPARATE UTILITY ROOM
- GREAT REAR GARDEN

Tenure: Freehold EPC Rating: C

Council Tax Band: B

offers over

£220,000



Please note the marker reflects the postcode not the actual property

view this property online shipways.co.uk/Property/CAB112237



Property Ref:
CAB112237 - 0002

1. MONEY LAUNDERING REGULATIONS Intending purchasers will be asked to produce identification documentation at a later stage and we would ask for your co-operation in order that there is no delay in agreeing the sale. 2. These particulars do not constitute part or all of an offer or contract. 3. The measurements indicated are supplied for guidance only and as such must be considered incorrect. Potential buyers are advised to recheck measurements before committing to any expense. 4. We have not tested any apparatus, equipment, fixtures or services and it is in the buyers interest to check the working condition of any appliances. 5. Where an EPC, or a Home Report (Scotland only) is held for this property, it is available for inspection at the branch by appointment. If you require a printed version of a Home Report, you will need to pay a reasonable production charge reflecting printing and other costs. 6. We are not able to offer an opinion either written or verbal on the content of these reports and this must be obtained from your legal representative. 7. Whilst we take care in preparing these reports, a buyer should ensure that his/her legal representative confirms as soon as possible all matters relating to title including the extent and boundaries of the property and other important matters before exchange of contracts.

Shipways is a trading name of Sequence (UK) Limited which is registered in England and Wales under company number 4268443, Registered Office is Cumbria House, 16-20 Hockliffe Street, Leighton Buzzard, Bedfordshire, LU7 1GN. VAT Registration Number is 500 2481 05.


shipways



0121 747 4722



castlebromwich@shipways.co.uk



258 Chester Road, Castle Bromwich,
BIRMINGHAM, West Midlands, B36 0JE



shipways.co.uk