



Vale View Terrace,

£325,000

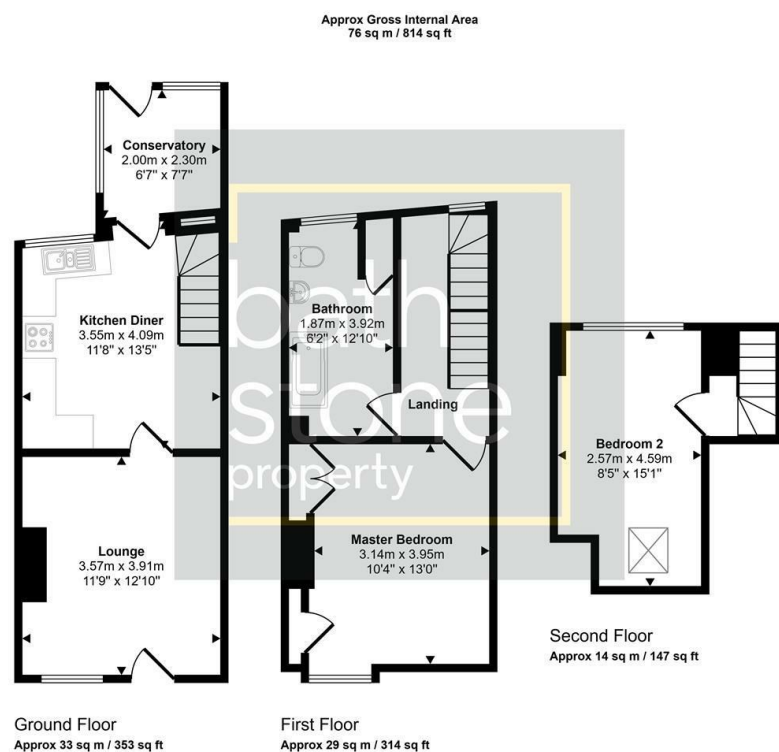
FOR SALE



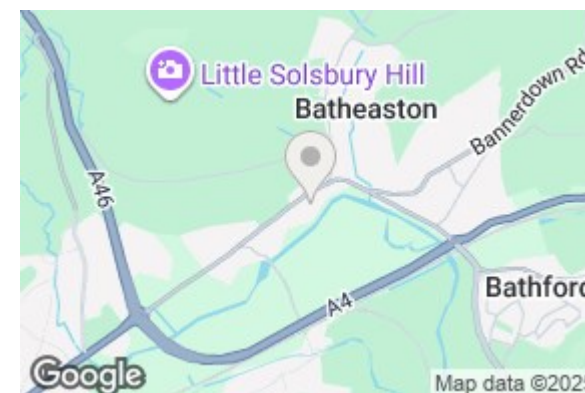
- Charming Cottage Set Over Three Floors
- Spacious Bedrooms
- Allocated parking along with on street parking
- Out-house
- Village Location
- Courtyard Garden
- Stunning Views

THE PROPERTY

Vale View Terrace is a wonderful cottage full of its own quirks situated less than 3 miles from Bath, this delightful terraced house which is set over three floors; offers a perfect blend of comfort and convenience. Spanning an impressive 814 square feet, the property features two well-proportioned bedrooms, making it an ideal choice for couples, small families, or those seeking a peaceful retreat.



This floorplan is only for illustrative purposes and is not to scale. Measurements of rooms, doors, windows, and any items are approximate and no responsibility is taken for any error, omission or mis-statement. Icons of items such as bathroom suites are representations only and may not look like the real items. Made with Made Snappy 360.



Energy Efficiency Rating

	Current	Potential
Very energy efficient - lower running costs		
(92 plus) A		
(81-91) B		
(69-80) C		
(55-68) D		
(39-54) E		
(21-38) F		
(1-20) G		
Not energy efficient - higher running costs		
England & Wales	53	
		EU Directive 2002/91/EC