



Connells

Coombe Court
Coventry



Property Description

A one bedroom semi detached home situated in the residential area of Binley, being close to local amenities and transport links. The accommodation briefly comprises: ground floor lounge and fitted kitchen, To the first floor there is a bedroom and a fitted shower room. Outside there is an allocated parking space.

Porch

Door to;

Lounge

17' 8" x 14' 2" (5.38m x 4.32m)

Double glazed window to the side elevation and two radiators.

Fitted Kitchen

7' 2" x 6' 8" (2.18m x 2.03m)

Wall and base mounted units incorporating an inset single drainer stainless steel sink unit with work surfaces and tiled splashbacks over. Electric oven and electric hob, plumbing for automatic washing machine, space for domestic appliance, double glazed window to the front elevation.

First Floor Landing

Airing cupboard.

Bedroom

11' 5" x 10' 2" (3.48m x 3.10m)

Double glazed window to the side elevation, radiator and fitted cupboard.

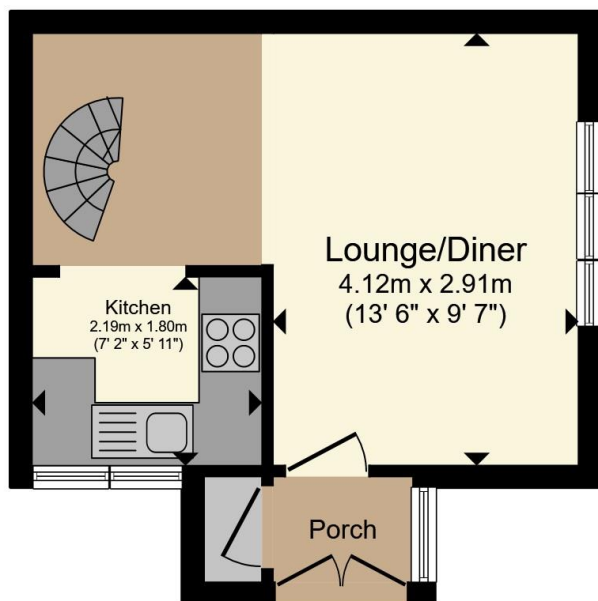
Fitted Shower Room

Tiled, comprising shower cubicle, wash hand basin, toilet, heated towel rail and double glazed window to the side elevation.

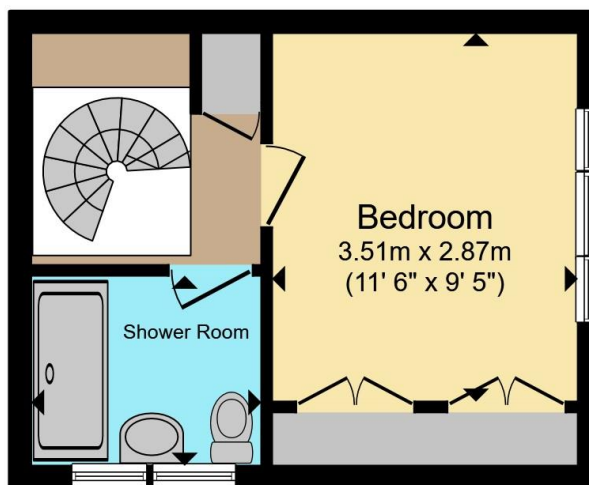
Outside

Allocated parking space.





Ground Floor



First Floor

Total floor area 45.1 m² (485 sq.ft.) approx

This floor plan is for illustrative purposes only. It is not drawn to scale. Any measurements, floor areas (including any total floor area), openings and orientation are approximate. No details are guaranteed, they cannot be relied upon for any purpose and they do not form part of any agreement. No liability is taken for any error, omission or misstatement. A party must rely upon its own inspection(s). Powered by www.propertybox.io

Connells

To view this property please contact Connells on

T 02476 553 093
E coventry@connells.co.uk

38 New Union Street
 COVENTRY CV1 2HN

EPC Rating: Council Tax
 Awaited Band: A

view this property online connells.co.uk/Property/COV323188

Tenure: Freehold



1. MONEY LAUNDERING REGULATIONS Intending purchasers will be asked to produce identification documentation at a later stage and we would ask for your co-operation in order that there will be no delay in agreeing the sale. 2. These particulars do not constitute part or all of an offer or contract. 3. The measurements indicated are supplied for guidance only and as such must be considered incorrect. Potential buyers are advised to recheck measurements before committing to any expense. 4. We have not tested any apparatus, equipment, fixtures, fittings or services and it is in the buyers interest to check the working condition of any appliances.

Connells Residential is registered in England and Wales under company number 1489613, Registered Office is Cumbria House, 16-20 Hockliffe Street, Leighton Buzzard, Bedfordshire, LU7 1GN. VAT Registration Number is 500 2481 05.

See all our properties at www.connells.co.uk | www.rightmove.co.uk | www.zoopla.co.uk

Property Ref: COV323188 - 0002

