



Olive

ESTATE AGENTS



Plot 7, 7 Steart Bushes Wedmore Road, Cheddar, BS27 3ED £365,000

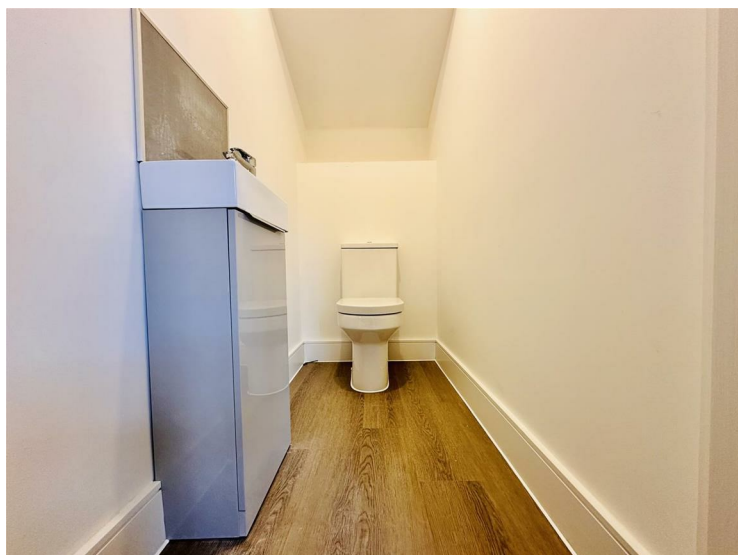
*** STUNNING 4 BEDROOM SEMI DETACHED NEW BUILD *** CONTEMPORARY LIVING SPACES *** MODERN KITCHEN UNITS WITH INTEGRATED APPLIANCES AND RECESSED SPOTLIGHTS AND LED UNDER COUNTER LIGHTING *** MODERN BATHROOM SUITES WITH HIGH QUALITY CHROME FITTINGS *** EN SUITE BATHROOM TO THE MAIN BEDROOM *** AIR SOURCE HEAT PUMP *** ZONED UNDERFLOOR HEATING ON THE GROUND FLOOR *** LOW ENERGY LED LIGHTING THROUGHOUT *** SUPERFAST FIBRE-OPTIC BROADBAND *** POD POINT ELECTRIC VEHICLE CHARGING POINT *** 10 YEAR GUARANTEE *** LOW CARBON, ECO FRIENDLY LIVING *** OFF STREET PARKING *** IDEAL CENTRAL LOCATION IN CHEDDAR WITHIN WALKING DISTANCE TO ALL SCHOOLS AND LOCAL AMENITIES *** EPC RATING A ***

This exclusive development in Cheddar has only 6 remaining plots available out of 21 stunning contemporary low-carbon, eco-friendly houses. Each home has high quality modern fittings in both the kitchen and bathrooms. With energy efficient air source heat pumps, owners can enjoy the benefit of reduced energy bills.

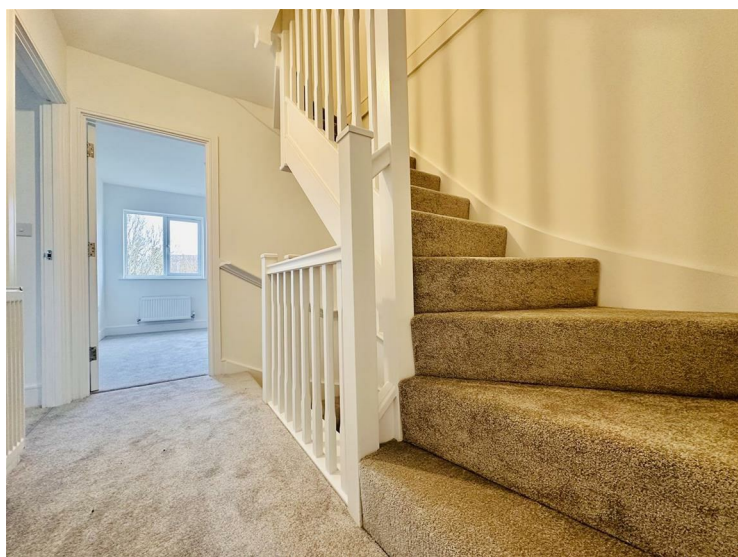
'Incentives towards legal fees and stamp duty' * terms and conditions apply

!!!£10,000 cash offered towards deposit contribution if bought by end of month!!!

Kitchen/Diner/Family Room



Landing



Bedroom Two



Cloakroom



Bedroom Three



Bedroom Four



En-Suite



Rear Garden




Family Bathroom



Main Bedroom



Energy Efficiency Rating		Current	Potential
Very energy efficient - lower running costs			
(92 plus) A			
(81-91) B			
(69-80) C			
(55-68) D			
(39-54) E			
(21-38) F			
(1-20) G			
Not energy efficient - higher running costs			
England & Wales	EU Directive 2002/91/EC		

Environmental Impact (CO ₂) Rating		Current	Potential
Very environmentally friendly - lower CO ₂ emissions			
(92 plus) A			
(81-91) B			
(69-80) C			
(55-68) D			
(39-54) E			
(21-38) F			
(1-20) G			
Not environmentally friendly - higher CO ₂ emissions			
England & Wales	EU Directive 2002/91/EC	