



Tennyson Avenue, , Bridlington, YO15 2EU

- End-Terrace Property
- Spacious Living
- Close To Local Amenities
- Three Bedrooms
- Ideal For A Range Of Tenants
- Located On The North Side Of Bridlington

£850 Per Month



Tennyson Avenue, , Bridlington, YO15 2EU

DESCRIPTION

Welcome to this charming three-bedroom end-terrace property, situated in a central location on the north side of Bridlington. Perfect for a range of tenants, including families and professionals, this home offers both space and convenience, with easy access to local amenities and the beautiful Bridlington North Side Beach just a short walk away.

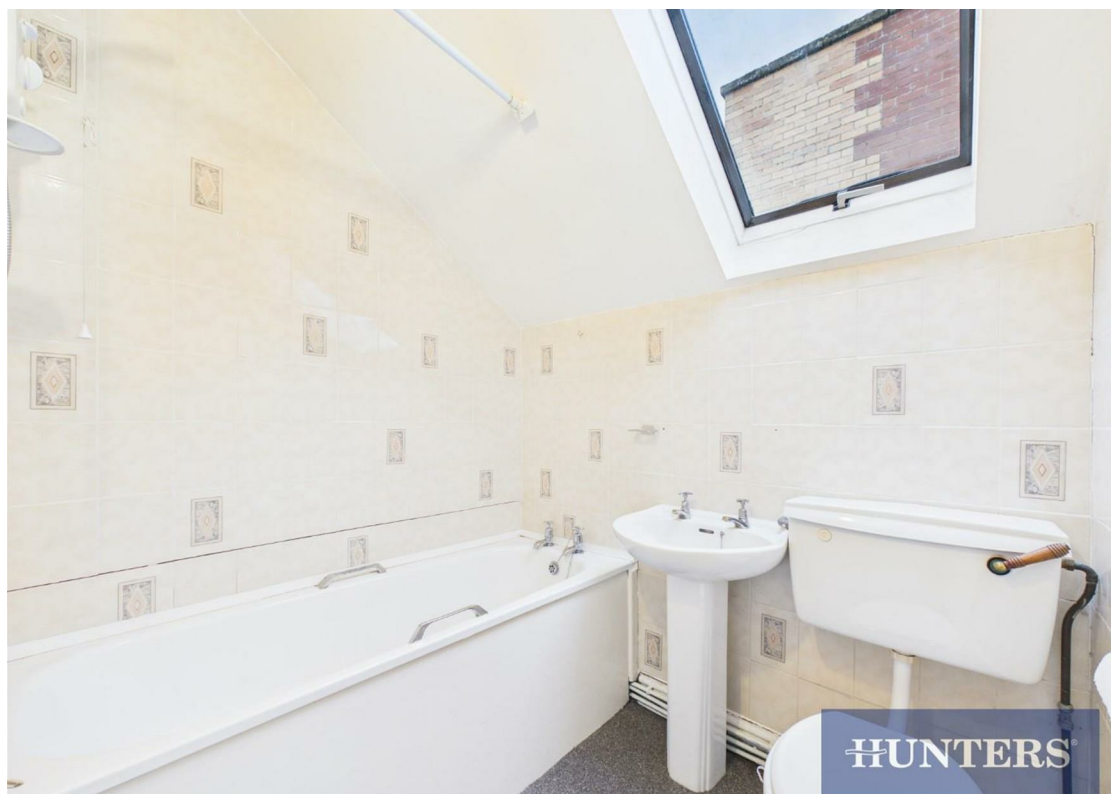
As you enter, you are greeted by a bright and spacious lounge, bathed in natural light, offering plenty of room for all your furniture. This is the perfect space for relaxing or entertaining. Just off the lounge, there's a second reception room, currently used as a dining room but versatile enough to be a home office, playroom, or additional living space.

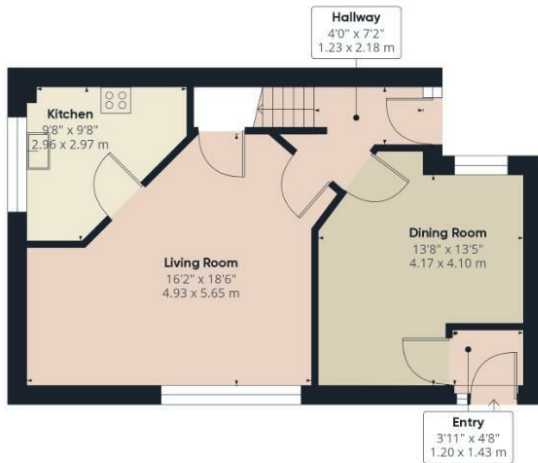
The kitchen is well-equipped with ample cupboard space and room for your appliances, making meal preparation a breeze. Upstairs, you'll find three generously sized double bedrooms, with two of them featuring Velux windows that enhance the sense of light and space. Completing the upper floor is the family bathroom, which includes a three-piece suite, tiled walls, and a bath with an overhead shower.

The property has been well-maintained by its current owner, offering a move-in-ready home with great potential. Located close to shops, supermarkets, transport links, Bridlington's Town Centre, and the scenic beach, this property is in the perfect spot for convenience and coastal living.

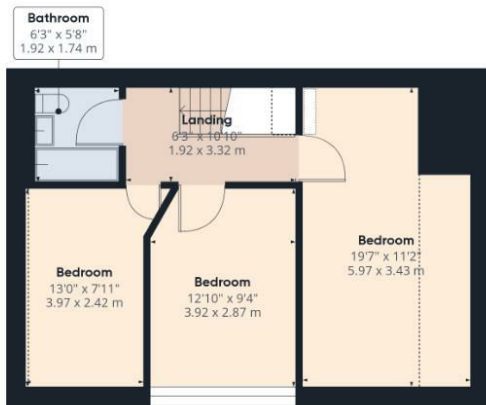
Don't miss out—schedule a viewing today and discover this fantastic home!







Ground Floor



Floor 1

Viewings

Please contact bridlingtonlettings@hunters.com, if you wish to arrange a viewing appointment for this property or require further information.

Valuations

For a valuation of your property, please email the team with your property details, contact information and the times you are available.

HUNTERS

Approximate total area⁽¹⁾

1098.03 ft²

102.01 m²

Reduced headroom

610.96 ft²

5.27 m²

(1) Excluding balconies and terraces

Reduced headroom

----- Below 5 ft/1.5 m

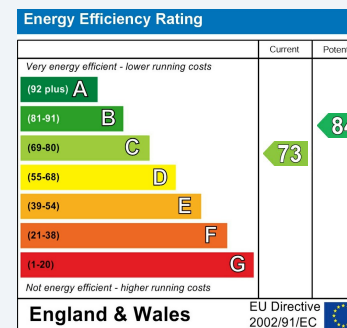
While every attempt has been made to ensure accuracy, all measurements are approximate, not to scale. This floor plan is for illustrative purposes only.

Calculations are based on RICS IPMS 3C standard.

GIRAFFE360

ENERGY PERFORMANCE CERTIFICATE

The energy efficiency rating is a measure of the overall efficacy of a home. The higher the rating the more energy efficient the home is and the lower the fuel bills will be.



These particulars are intended to give a fair and reliable description of the property but no responsibility for any inaccuracy or error can be accepted and do not constitute an offer or contract. We have not tested any services or appliances (including central heating if fitted) referred to in these particulars and the purchasers are advised to satisfy themselves as to the working order and condition. If a property is unoccupied at any time there may be reconnection charges for any switched off/disconnected or drained services or appliances - All measurements are approximate.

THINKING OF SELLING? If you are thinking of selling your home or just curious to discover the value of your property, Hunters would be pleased to provide free, no obligation sales and marketing advice. Even if your home is outside the area covered by our local offices we can arrange a Market Appraisal through our national network of Hunters estate agents.

