



# Grove Court

24 Grove End Road, NW8

£4,983.33 per month  
(£1,150 per week)

A modern and spacious three bedroom apartment set in a sought after building with hot water included close to St John's Wood Underground Station and High Street.



# Grove Court

24 Grove End Road, NW8

- Modern Apartment
- 3 Bedrooms, 2 Bathrooms
- Lift, Porter
- Close to St John's Wood Station

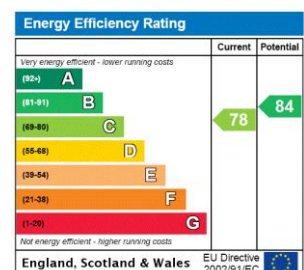


A stunning, spacious three bedroom apartment set in a prestigious portered mansion block in St John's Wood, within close proximity to the Underground station (Jubilee Line) and the High Street boasting all amenities.

The property comprises three bedrooms, two bathrooms (one en suite), large reception room and fully fitted kitchen with integrated appliances and breakfast bar.

Additional benefits include porter and lift.

**Minimum Term:** 6 months  
**Deposit Required:** £6,900.00  
**Local Authority:** City Of Westminster  
**Council Tax Band:** G  
**EPC Rating:** C  
**Unfurnished**

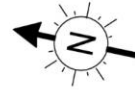


### *Chestertons St John's Wood Lettings*

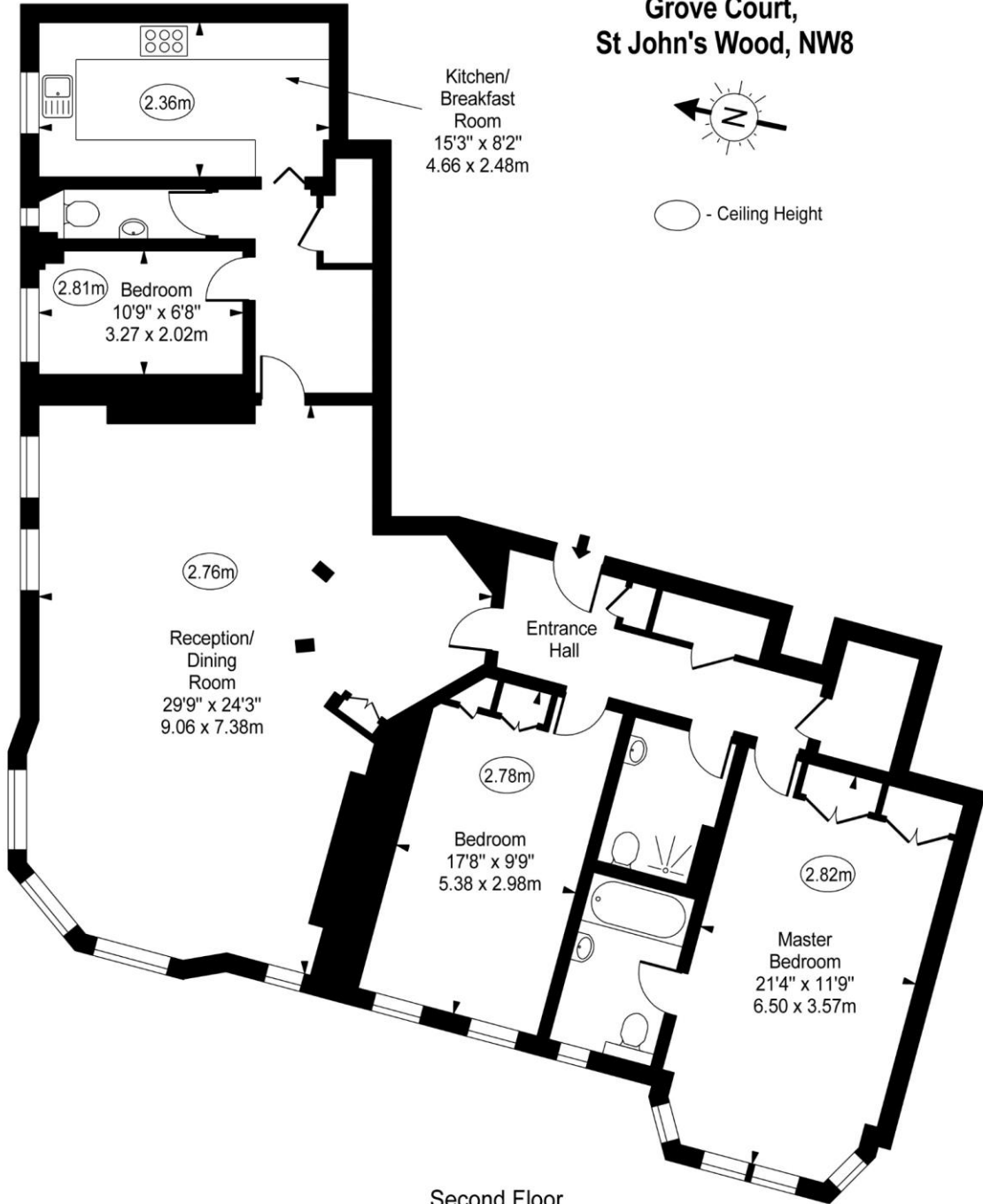
122 St John's Wood High Street  
 St John's Wood  
 London  
 NW8 7SG  
 stjohnswood@chestertons.co.uk  
 02030408622  
 chestertons.co.uk

Additional tenant charges apply (fees apply to non-AST tenancies only)  
 Tenancy Agreement Fee: £300  
 References per Tenant/Guarantor: £60  
 Inventory check (approx. £100 – £250 inc. VAT)  
[chestertons.co.uk/property-to-rent/applicable-fees](http://chestertons.co.uk/property-to-rent/applicable-fees)

**Grove Court,  
St John's Wood, NW8**



○ - Ceiling Height



**Second Floor**

**Approx Gross Internal Area 1620 Sq Ft - 150.50 Sq M**

For Illustration Purposes Only - Not To Scale

[www.goldlens.co.uk](http://www.goldlens.co.uk)

Produced for Chestertons

Ref. No. 015827R

