



www.jeffreygross.co.uk

Buxton Walk

CARDIFF

VALE

CAERPHILLY

BRISTOL

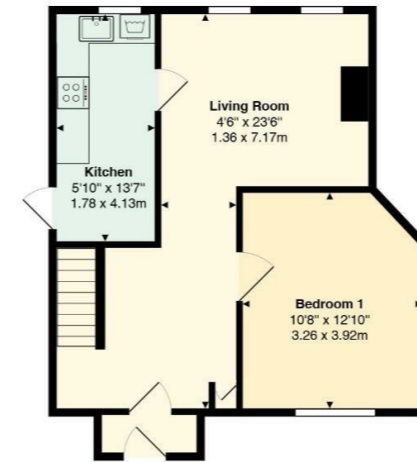


Comments by Ms Olivia Melville-Brown



Property Specialist
Ms Olivia Melville-Brown
Branch manager

o.melvillebrown@thepropertyoutlet.com



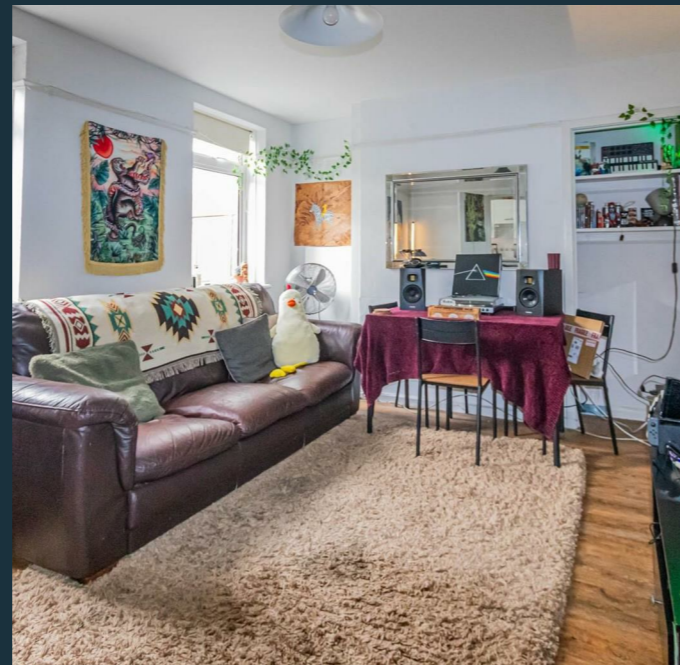
Buxton Walk, Horfield, Bristol, BS7 0LG

Total Area: 936 ft² ... 87.0 m²

All measurements are approximate and for display purposes only



Comments by the Homeowner





Buxton Walk

, Bristol, BS7 0LG

PCM

£2,300 PCM



4 Bedroom(s)



1 Bathroom(s)



936.46 sq ft



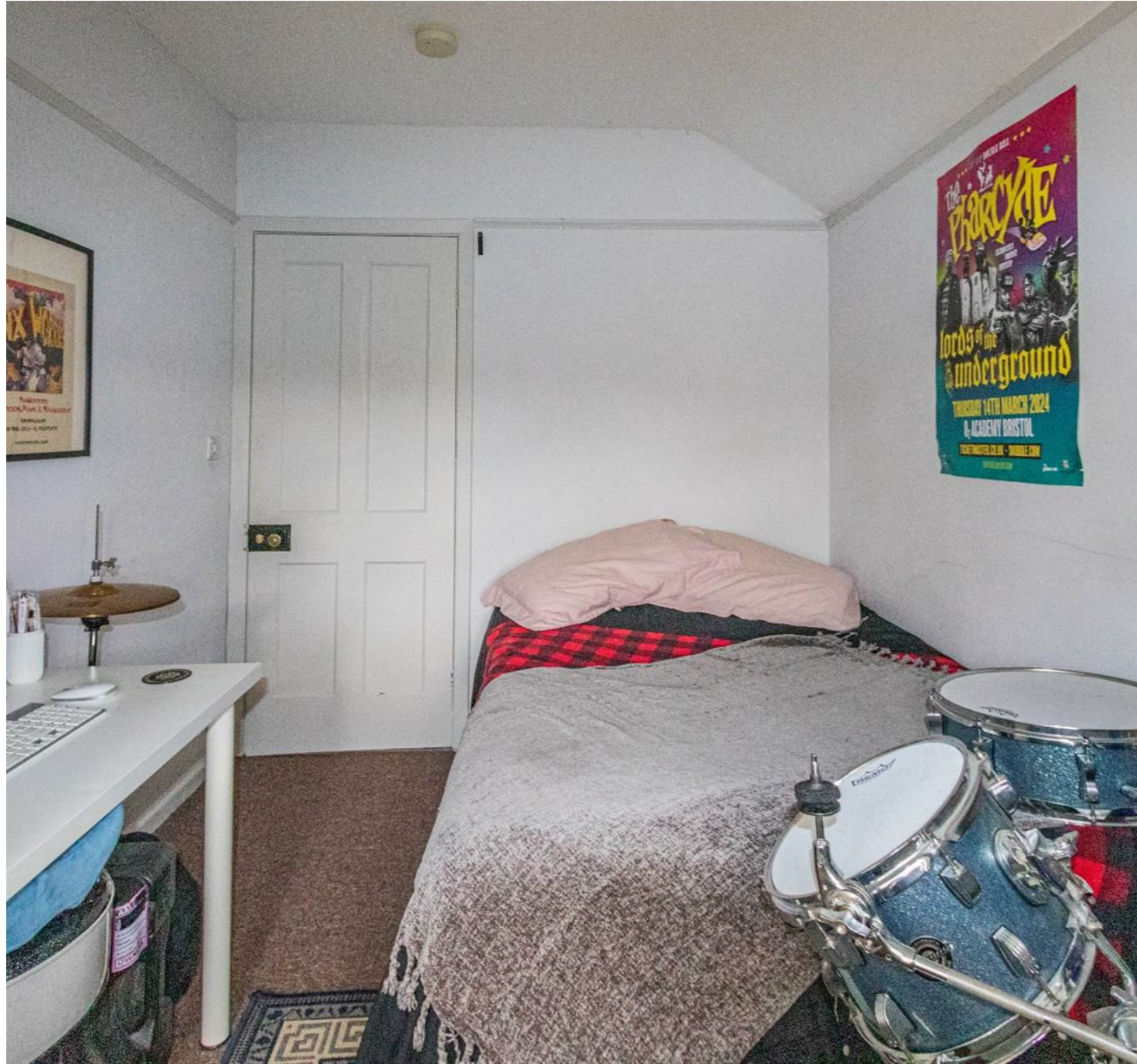
Contact our
Property Outlet Branch

0117 935 4565

* AVAILABLE 25.07.2026*

FURNISHED FOUR DOUBLE BEDROOM HOME WITH BILLS INCLUDED!
The Property Outlet are keen to offer this spacious student property to the 2025/2026 rental market. The accommodation comprises ENTRANCE HALL, LIVING ROOM (BEDROOM 1) DINING ROOM & a FITTED KITCHEN. To the first floor there are THREE DOUBLE BEDROOMS & a BATH/SHOWER ROOM&W/C. White goods include a GAS COOKER, TUMBLE DRYER, WASHING MACHINE, FRIDGE & FREEZER. Further benefits include GAS CENTRAL HEATING, DOUBLE GLAZING, OFF ROAD PARKING & FRONT & REAR GARDENS. Close to LOCAL AMENITIES, BARS, RESTAURANTS and CAFE'S on Gloucester Road, HORFIELD SPORTS CENTRE & PUBLIC TRANSPORT. Sorry no pets.

Holding Deposit £503.76



CARDIFF

VALE

CAERPHILLY

BRISTOL

www.jeffreygross.co.uk





Energy Efficiency Rating		Current	Potential
Very energy efficient - lower running costs			
(92 plus)	A		85
(81-91)	B		
(69-80)	C		
(55-68)	D	66	
(39-54)	E		
(21-38)	F		
(1-20)	G		
Not energy efficient - higher running costs			
England & Wales		EU Directive 2002/91/EC	

