



House (EPC Rating: D)

# OLIVERS NORTH ROAD, PORTSLADE, EAST SUSSEX, BN41 2HD

Per Month

£2,950 Per

# 5 Bedroom House located in Portslade

Welcome to this truly unique and beautifully extended 1930s-built former farmhouse, set within a substantial and private plot. This remarkable home offers an exceptional blend of traditional character and contemporary living, ideal for families seeking generous space and flexible accommodation.

The property features five well-proportioned bedrooms and three bathrooms, including a stunning main bathroom with a traditional Italian-style design and a stylish en-suite finished with modern herringbone-style tiling.

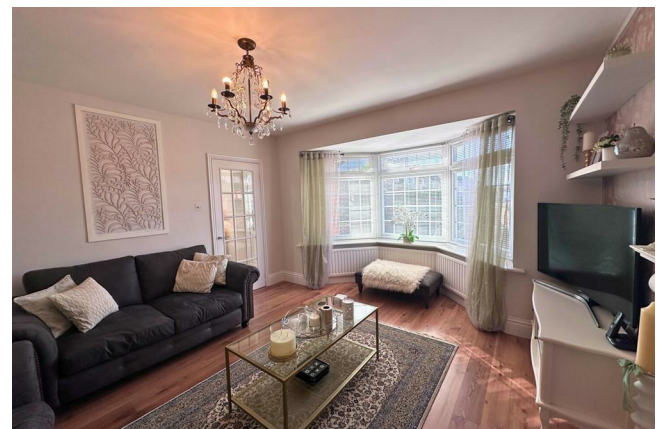
There are two fully fitted kitchens, making the home perfectly suited to larger families, entertaining, or multi-generational living. A key highlight is the self-contained annex, complete with its own kitchen, shower room, lounge, and bedroom area, offering excellent flexibility for guests, independent living, or working from home.

The home retains its original charm, including a striking flint wall along one side and a characterful brick wall on the other. Outside, the mature landscaped gardens provide a peaceful setting, complete with a built-in BBQ area and plenty of space to relax or entertain.

Accessed via electric gates, the property offers privacy, security, and ample parking for multiple vehicles.

This is a rare opportunity to rent a substantial character home that combines rustic farmhouse features with stylish, modern interiors. For enquiries or to arrange a viewing, please contact us directly.



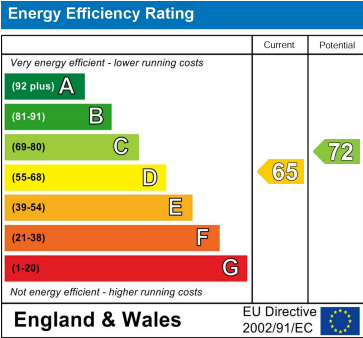


RICHMOND HOUSE - LETTINGS | 105 HIGHSTREET, CRAWLEY, WEST SUSSEX, RH10 1DD

Council Tax Band

D

Energy Performance Graph



Call us on  
**01293529993**  
**[louis@connectukgroup.co.uk](mailto:louis@connectukgroup.co.uk)**

Agents Note: Whilst every care has been taken to prepare these particulars, they are for guidance purposes only. All measurements are approximate and are for general guidance purposes only and whilst every care has been taken to ensure their accuracy, they should not be relied upon and potential buyers are advised to recheck the measurements.