



Normansfield Avenue, TW11

£769,950

A spacious luxury ground floor apartment located in a very peaceful setting in 34 acres of beautifully landscaped private communal gardens and natural woodland.

Maple House is located off Normansfield Avenue within the private Langdon Park development located in the 'river roads' area of Teddington. Kingston town centre is close by as well as Hampton Wick & Teddington High Streets. Excellent transport links are also available from Hampton Wick and Teddington stations with multiple bus routes. The area is renowned for being close to a delightful stretch of the river Thames and the nearby open spaces of Bushy Park and the grounds of Hampton Court Palace.

Features

Ground Floor, Three Bedrooms
Allocated & Guest Parking
Quiet & Spacious Interior
Private Gym & Sauna
Leasehold 101 Years Remaining
Dual Aspect 17ft Reception



Normansfield Avenue, TW11

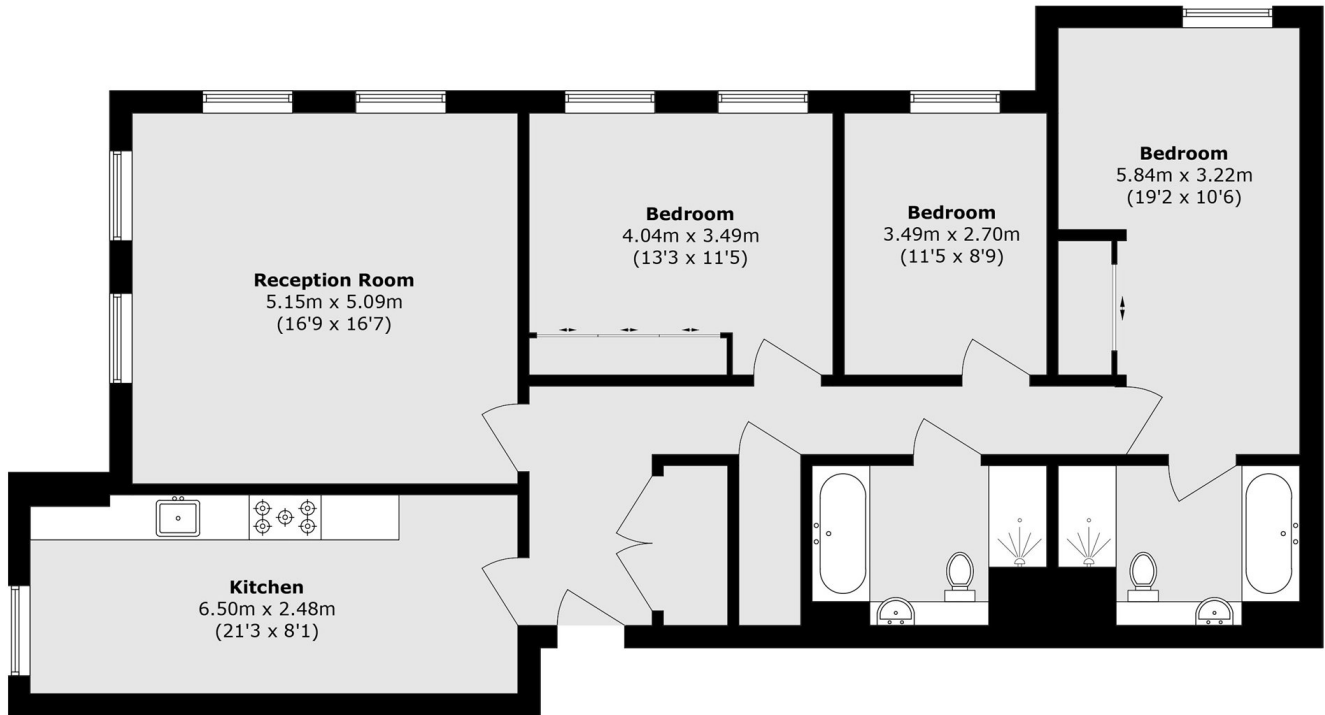
Enter the hallway which leads to all rooms, including a wonderful 17ft reception room with dual aspect views of the gardens through floor to ceiling windows, which is quiet, light and airy.

The hallway then leads to three double bedrooms two of which have extensive fitted wardrobes. There are two matching bathrooms, both with a separate shower, and one of which is en suite to the large master bedroom. The kitchen/breakfast room has integrated appliances and granite work-tops and space for a dining area.

There is allocated parking, designated visitor spaces, and a private residents' gym and sauna located close by.



Normansfield Avenue, Teddington, TW11



Total area (approx.): 118.2 sq. m (1272.3 sq. ft)