



Pymore House



Pymore House

, 20 Thread Mill Lane, Pymore, DT6 5QT

Bridport Town 1 mile. West Bay/Jurassic Coast 3 miles.

OPEN GUIDE PRICE £680,000 - £695,000

A handsome and well appointed Georgian house in the former ropemakers' village of Pymore surrounded by lovely countryside and within easy reach of Bridport town

- Fine Georgian house
- 4 Bedrooms, 2 bathrooms (1 en-suite)
- Kitchen/breakfast room, utility
- Attractive south / west facing gardens
- Delightful historic village
- Spacious 2309 sqft
- 2 Reception rooms , balcony
- Well appointed and presented
- Garage and parking
- Freehold. CTB: F. EPC: Exempt - Grade II Listed

Guide Price £680,000

THE PROEPRTY

Pymore House is a very attractive and substantial semi detached Georgian house in a delightful setting in the former ropemakers' village of Pymore. It is the front portion of the former manager's house, believed to have been built in the early 19th century and listed grade 2, of architectural or historic importance, having attractive colour-washed rendered elevations under a slate roof. It was converted and extensively refurbished in 2007 and has been under the current ownership since then.

Attractive and well proportioned accommodation is arranged over three floors, facing principally west and south. There are a whole number of original character style features, typical of its age and type, including ornate fanlights above the front door, mosaic tiled flooring, fireplaces including marble, sash windows, ornate cornices, panelled doors and a fine winding staircase.

Well appointed throughout, the many impressive features include gas-fired central heating with megaflo pressurised hot water system, well equipped kitchen with granite worktops, Neff electric double oven, gas hob, integrated fridge/freezer and integrated dishwasher plus Pro Boil water tap, utility with matching units and granite worktops, period style family bathroom with mains shower, en-suite wet room (quality fittings installed by Ocean Bathrooms of Bridport in 2018), fully tiled twin basins, electric underfloor heating, heated mirror and mood lighting (Durofit fittings) and built-in wardrobes to many of the bedrooms.

The gracious accommodation extends to -Ground floor : Reception hall , cloakroom , dining/family room , kitchen/breakfast room, utility room. First floor: Landing, living room with balcony, principle bedroom with en suite shower room. Second floor: 3 further bedrooms , bathroom.



OUTSIDE

Driveway parking and single garage.

The attractive gardens are well screened and principally face south and west.

The front garden is enclosed behind brick walls with railings and hedging, with lawned areas and flower borders. The main rear garden is good sized and very well stocked with adjoining paved terrace, lawns and a whole variety of trees and shrubs. Within this garden is a former air raid shelter.

PYMORE VILLAGE

Pymore is a unique former ropemakers' village, which is set on the River Brit and dates back to the 14th century. By the 1700s it had gained a reputation for ropemaking and the population depended for their livelihoods on rope and twine making at the village mill, or growing flax and hemp in nearby fields. Rope walks were set up near the mill pond and outbuildings. Cottages, a dairy and a brewery were built. A school was opened in 1870 as well as a girls' hostel, however, the advent of manmade fibres forced the ropery to close in 1955, after which the village was deserted and the buildings became derelict until the village was regenerated in the early 2000s. The original property is well restored and new homes were built in a sympathetic local style. The result is a unique riverside village development within very easy reach of Bridport town centre and a broad range of amenities.

SERVICES

All mains services.

Broadband - Standard up to 0.5Mbps and Superfast up to 20Mbps.

Mobile phone service providers available are O2 and Vodafone for voice and data services

inside and EE, Three, O2 and Vodafone for voice and data services outside.

(Broadband and mobile phone information taken from Ofcom website Results are predictions and not a guarantee. Actual services available may be different from results and may be affected by network outages).

A service charge of £XXX per annum is payable to the Pymore Village Management Company for the upkeep of common areas etc.

VIEWINGS

Strictly by appointment with Stags Bridport.

DIRECTIONS

From Bridport Town Hall, proceed along West Street and turn 2nd right into Victoria Grove. Follow this road out of the town and into Pymore. Turn left into Thread Mill Lane and Pymore House is found towards the end on the right.

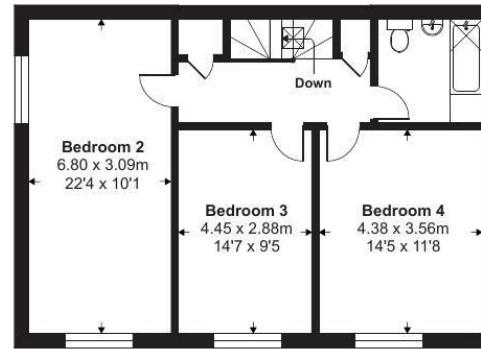
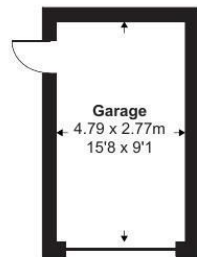


Approximate Area = 2166 sq ft / 201.2 sq m

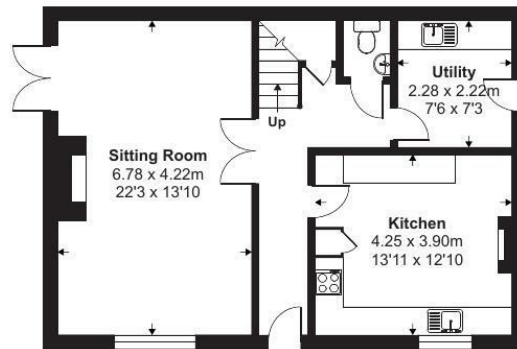
Garage = 143 sq ft / 13.3 sq m

Total = 2309 sq ft / 214.5 sq m

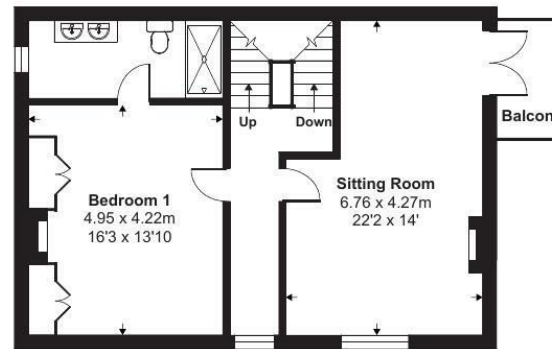
For identification only - Not to scale



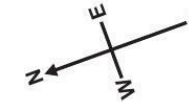
Second Floor



Ground Floor



First Floor



Floor plan produced in accordance with RICS Property Measurement 2nd Edition, Incorporating International Property Measurement Standards (IPMS2 Residential). © n1checom 2025. Produced for Stags. REF: 1303275

IMPORTANT: Stags gives notice that: 1. These particulars are a general guide to the description of the property and are not to be relied upon for any purpose. 2. These particulars do not constitute part of an offer or contract. 3. We have not carried out a structural survey and the services, appliances and fittings have not been tested or assessed. Purchasers must satisfy themselves. 4. All photographs, measurements, floorplans and distances referred to are given as a guide only. 5. It should not be assumed that the property has all necessary planning, building regulation or other consents. 6. Whilst we have tried to describe the property as accurately as possible, if there is anything you have particular concerns over or sensitivities to, or would like further information about, please ask prior to arranging a viewing.



32 South Street, Bridport, Dorset, DT6 3NQ

bridport@stags.co.uk

01308 428000



@StagsProperty

Cornwall | Devon | Somerset | Dorset | London