



Price

£230,000

Leasehold

1x  1x  1x 

**Elizabeth Place, Queens
Road, East Grinstead,
West Sussex, RH19**

OVER 60?

Secure this property
for up to **59% less!**

cubitt & west
Helping you move forwards



Main features

- Original show flat for the development
- Immaculately present throughout
- With allocated parking in a gated indoor car park
- Located in a high end, sought after development in the heart of East Grinstead town centre
- Benefiting from private terrace as well as residents' roof garden

Accommodation

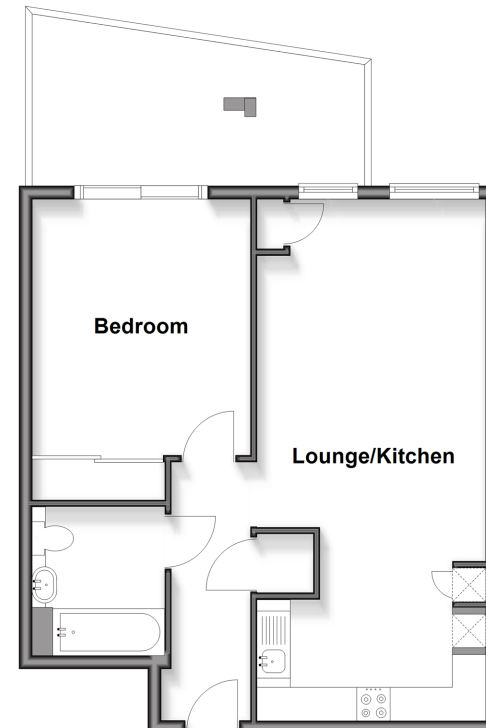
LOWER GROUND FLOOR

- Entrance Hall
- Lounge/Kitchen: 25'5 maximum x 11'2 (7.75m x 3.41m)
- Bedroom: 12'8 x 11'10 (3.86m x 3.61m)
- Bathroom: 7'3 x 6'6 (2.21m x 1.98m)

OUTSIDE

- Terrace
- Allocated Parking Space

Lower Ground Floor
Approx. 51.0 sq. metres (549.3 sq. feet)



Call East Grinstead - 01342 314324 ■ cubittandwest.co.uk

- Legal advice should be taken to verify fixtures/fittings, planning, alterations and/or lease details
- Through a Homewise Home For Life Plan people aged 60+ can secure this property for up to 59% less, by purchasing a Lifetime Lease

- Appliances & services are untested, dimensions are approximate and floor plans are not to scale



20614482/20260116/JL/CM